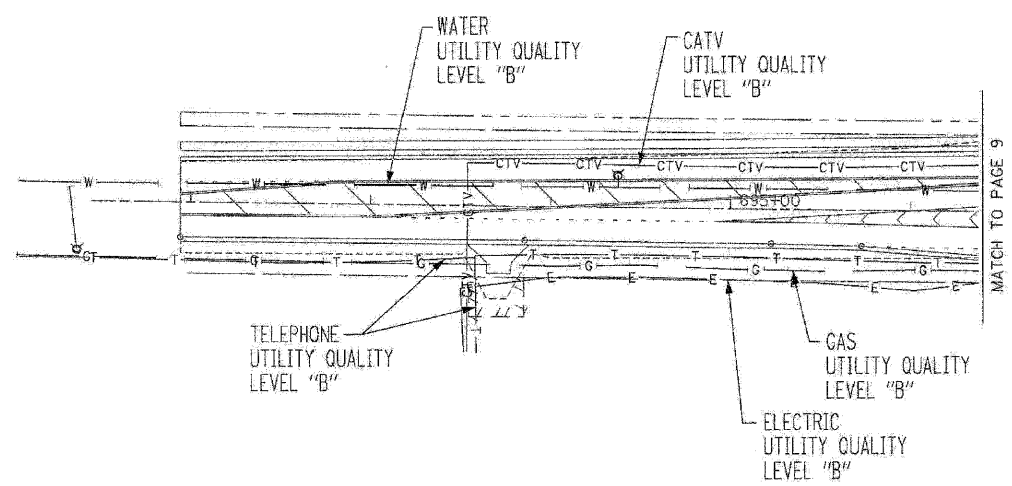
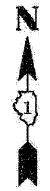


CONTRACT NO. 62882				
F.A.P. RTE.	SECTION	COUNTY	TOTAL SHEETS	SHEET NO.
326		McHENRY	502	182
STA. 9+35.22		TO STA. 142+08.53		
FED. ROAD DIST. NO.	ILLINOIS	FED. AID PROJECT		



The SBC locations depicted have been obtained through the application of geophysical methods to determine the existence and approximate horizontal position of these facilities. However, SBC will not provide TBE Group, Inc. with utility records nor allow access to their field closures (pedestals/manholes etc.), to help verify the locations of their existing underground facilities. Therefore, TBE is unable to verify the completeness of the SBC locations depicted in accordance with the CI/ASCE Standard 38-02.

TBE GROUP, INC.
 CIVIL ENGINEERING * TRANSPORTATION * ENVIRONMENTAL
 * PLANNING * UTILITY ENGINEERING/LOCATING

ILO9500264, 265, 267
 TBE SUE PAGE NO: 10 of 14
 Checked by: *[Signature]*

Utility Quality Level "B" : Designating

	SANITARY SEWER
	TELEPHONE
	WATER
	GAS
	CABLE TELEVISION
	FIBER OPTIC
	ELECTRIC

Utilities shown on these plans as depicted in the legend have been investigated by TBE Group, Inc in accordance with SUE Industry Standards. All other information shown has been provided to TBE Group, Inc by others. TBE's SUE field investigation was performed 09/16/06 through 3/19/07. Changes to utilities after these dates may have been made and therefore may result in variances from this plan. Consideration should be given to updating this plan if deemed advisable prior to final design and construction.

205 W. WACKER DRIVE
 SUITE 1020
 CHICAGO, IL 60606
 (312) 704-1970

REVISIONS	
NAME	DATE

ILLINOIS DEPARTMENT OF TRANSPORTATION
 SUE Investigation of Underground Utilities
 RT. 47 from Kreuzer Road to Reed Road in Huntley
 County-McHenry
 Section No. 105X&105) WRS-2
 Contract No. 62882
 DRAWN BY : KLC
 SCALE : 1" = 50'

FILE NAME = S:\11-CADD\11-105X&105) WRS-2.dwg
 PLOT SCALE = 1:1
 USER NAME = 3630