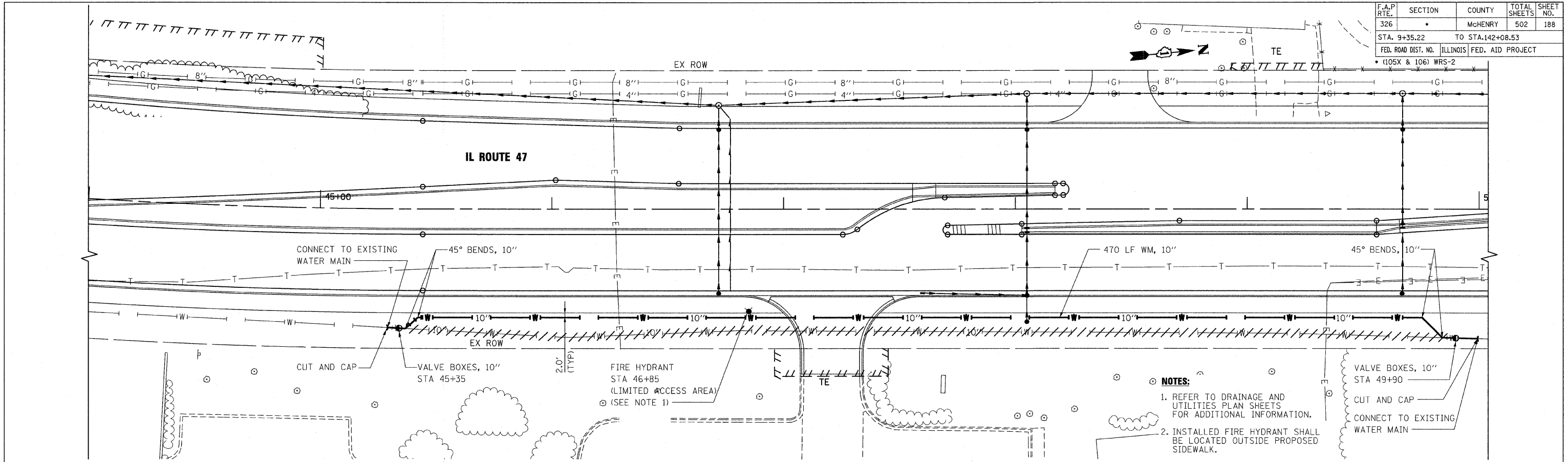


F.A.P. RTE.	SECTION	COUNTY	TOTAL SHEETS	SHEET NO.
326		McHENRY	502	188
STA. 9+35.22		TO STA. 142+08.53		
FED. ROAD DIST. NO.		ILLINOIS FED. AID PROJECT		
• (105X & 106) WRS-2				

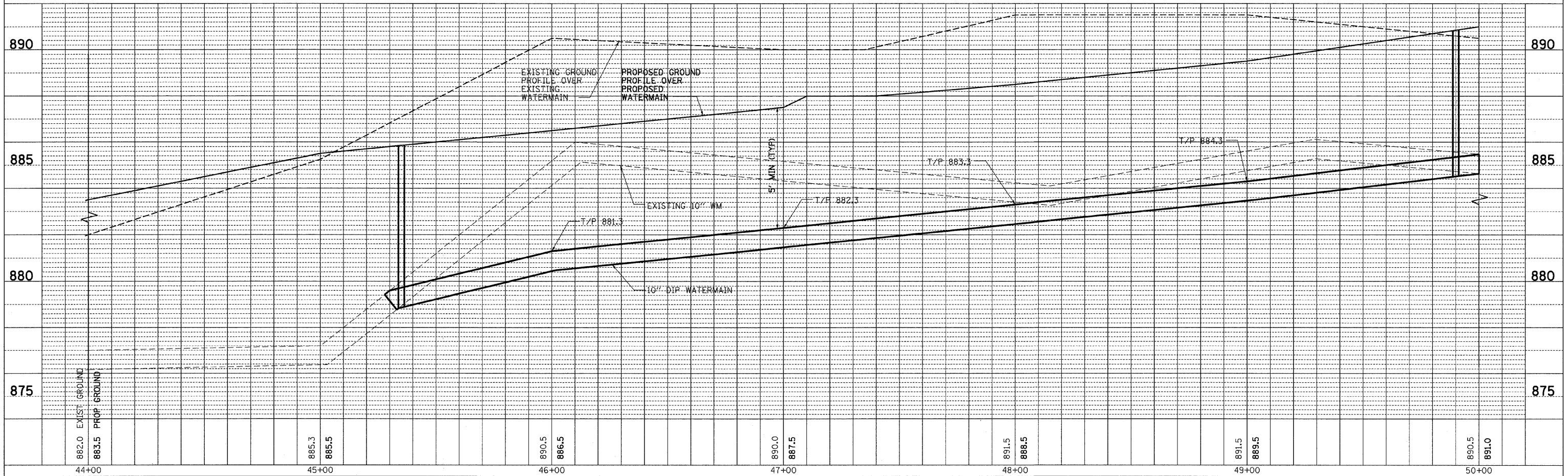
PLAN	DATE
SURVEYED	
ALIGNED	
CHECKED	
BY	
NO.	

PROFILE	DATE
SURVEYED	
GRADES CHECKED	
BY	
NO.	

PLOT DATE = Wednesday, October 14, 2009
 FILE NAME = S:\11-CADD\11-int\1188_wm_ah188.dgn
 PLOT SCALE = 200
 USER NAME = 3079



- NOTES:**
1. REFER TO DRAINAGE AND UTILITIES PLAN SHEETS FOR ADDITIONAL INFORMATION.
 2. INSTALLED FIRE HYDRANT SHALL BE LOCATED OUTSIDE PROPOSED SIDEWALK.
 3. CONTRACTOR SHALL VERIFY MIN. 5' DEPTH OF COVER PROVIDED OVER PROPOSED WATER MAIN.



10/27/2009