

F.A.P. RTE.	SECTION	COUNTY	TOTAL SHEETS	SHEET NO.
326		McHENRY	502	195

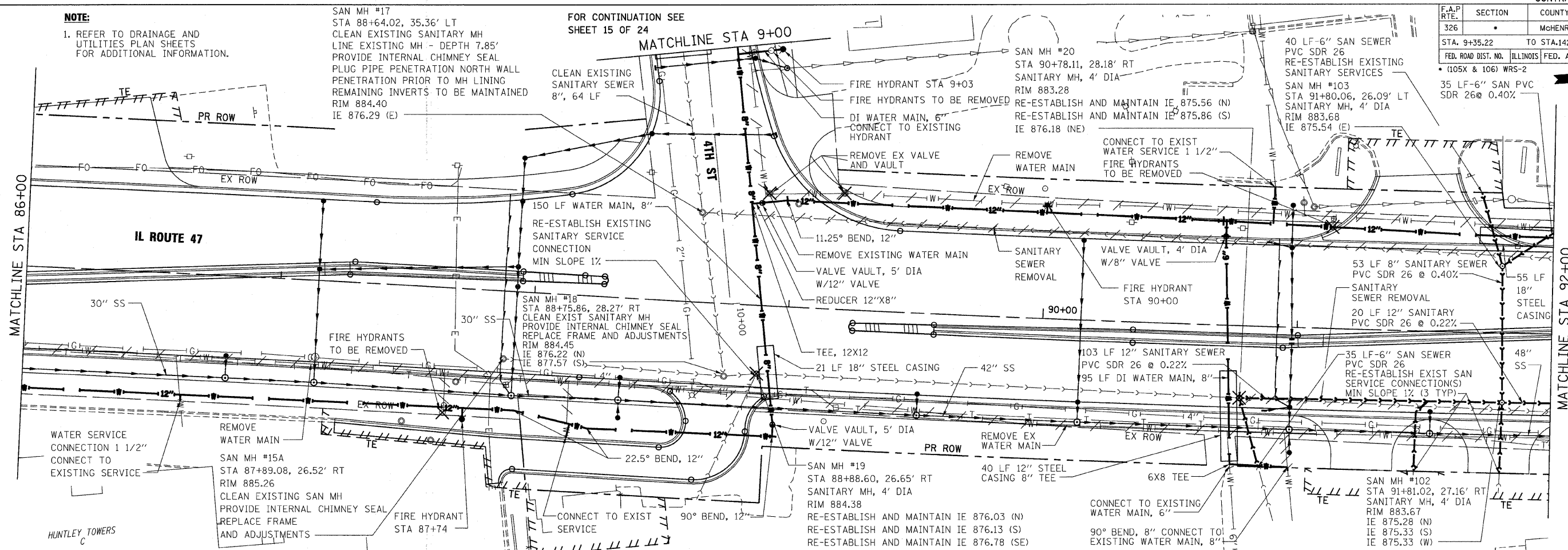
STA. 9+35.22 TO STA.142+08.53
 FED. ROAD DIST. NO. ILLINOIS FED. AID PROJECT
 • (105X & 106) WRS-2

NOTE:
 1. REFER TO DRAINAGE AND UTILITIES PLAN SHEETS FOR ADDITIONAL INFORMATION.

SAN MH #17
 STA 88+64.02, 35.36' LT
 CLEAN EXISTING SANITARY MH
 LINE EXISTING MH - DEPTH 7.85'
 PROVIDE INTERNAL CHIMNEY SEAL
 PLUG PIPE PENETRATION NORTH WALL
 PENETRATION PRIOR TO MH LINING
 REMAINING INVERTS TO BE MAINTAINED
 RIM 884.40
 IE 876.29 (E)

FOR CONTINUATION SEE
 SHEET 15 OF 24

MATCHLINE STA 9+00

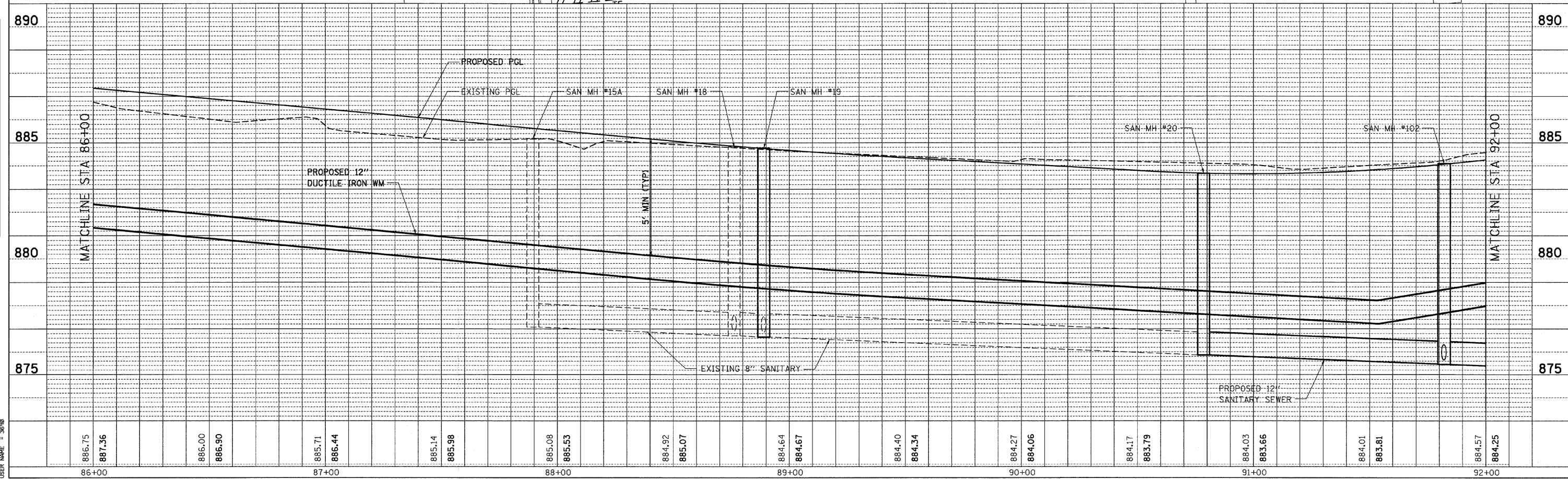


DATE	BY	REVISION

PLAN
 SURVEYED
 ALIGNED
 CHECKED
 NO. _____
 DATE _____

DATE	BY	REVISION

PROFILE
 SURVEYED
 GRADES CHECKED
 STATIONED
 NO. _____
 DATE _____



PLOT DATE = Wednesday, October 14, 2009
 FILE NAME = S:\11-CADD\11-1\11-1\11-1\11-1.dgn
 USER NAME = 3698

10/27/2009