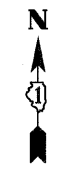


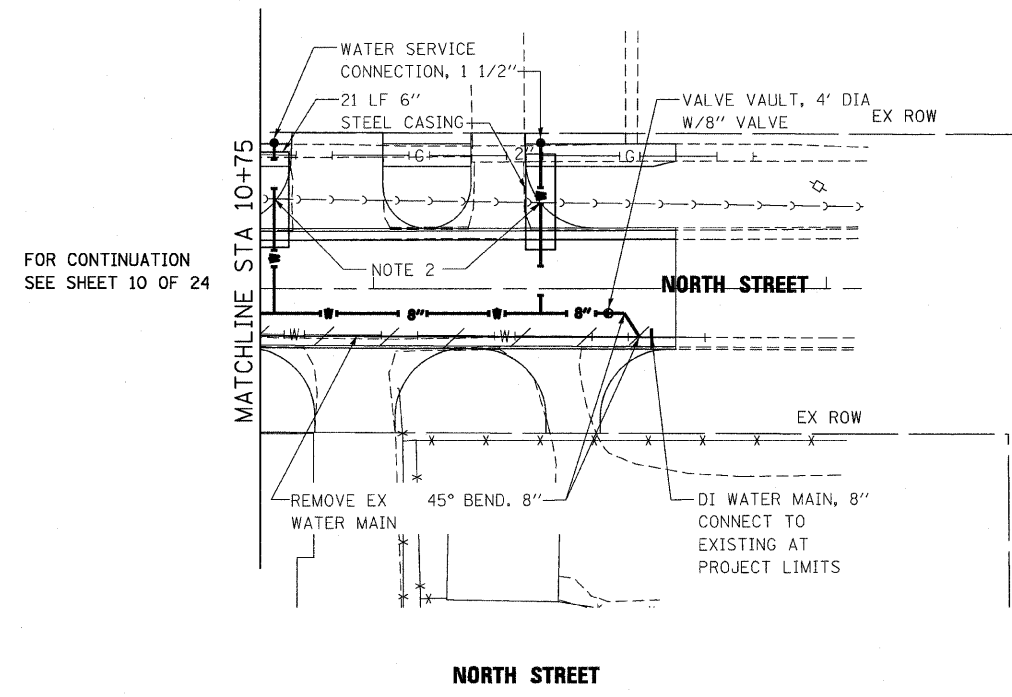
F.A.P. RTE.	SECTION	COUNTY	TOTAL SHEETS	SHEET NO.
326	*	McHENRY	502	202
STA. 9+35.22		TO STA. 142+08.53		
FED. ROAD DIST. NO.		ILLINOIS FED. AID PROJECT		
* (105X & 106) WRS-2				



DATE	BY
DATE	BY
DATE	BY

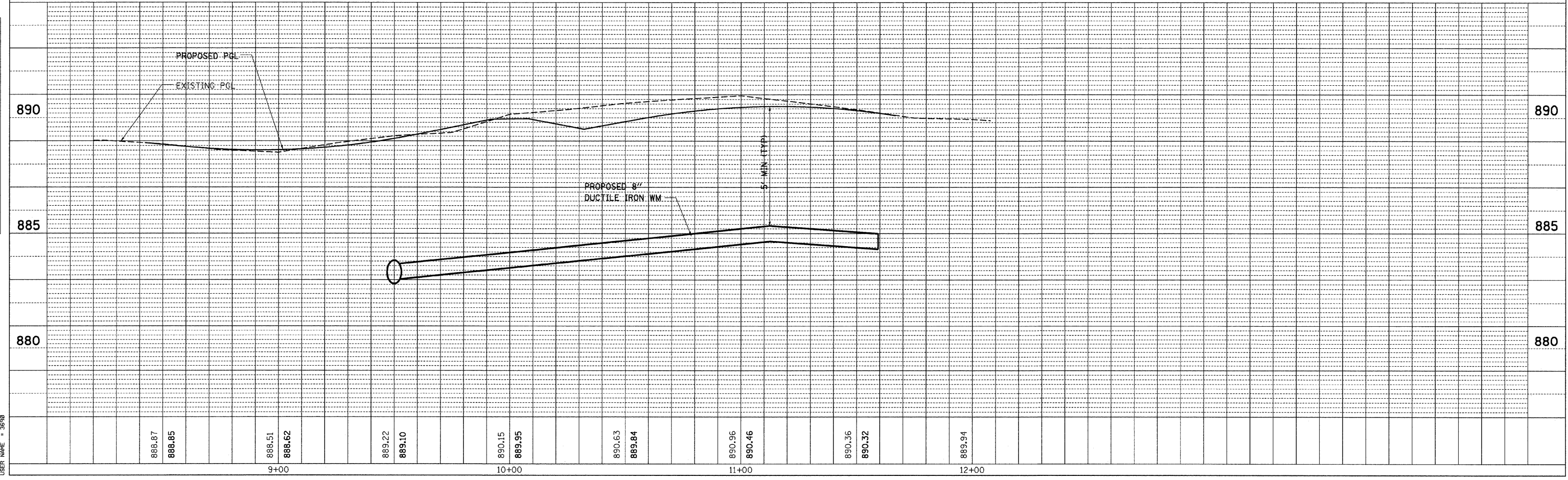
DATE	BY
DATE	BY
DATE	BY

PLOT DATE = Wednesday, October 14, 2009
 FILE NAME = S:\11-CADD\01-sh\1\202-am-sh\103.dgn
 USER NAME = 5878



FOR CONTINUATION
 SEE SHEET 10 OF 24

- NOTE:**
1. REFER TO DRAINAGE AND UTILITIES PLAN SHEETS FOR ADDITIONAL INFORMATION.
 2. MAINTAIN 18" VERTICAL SEPARATION.



10/27/2009