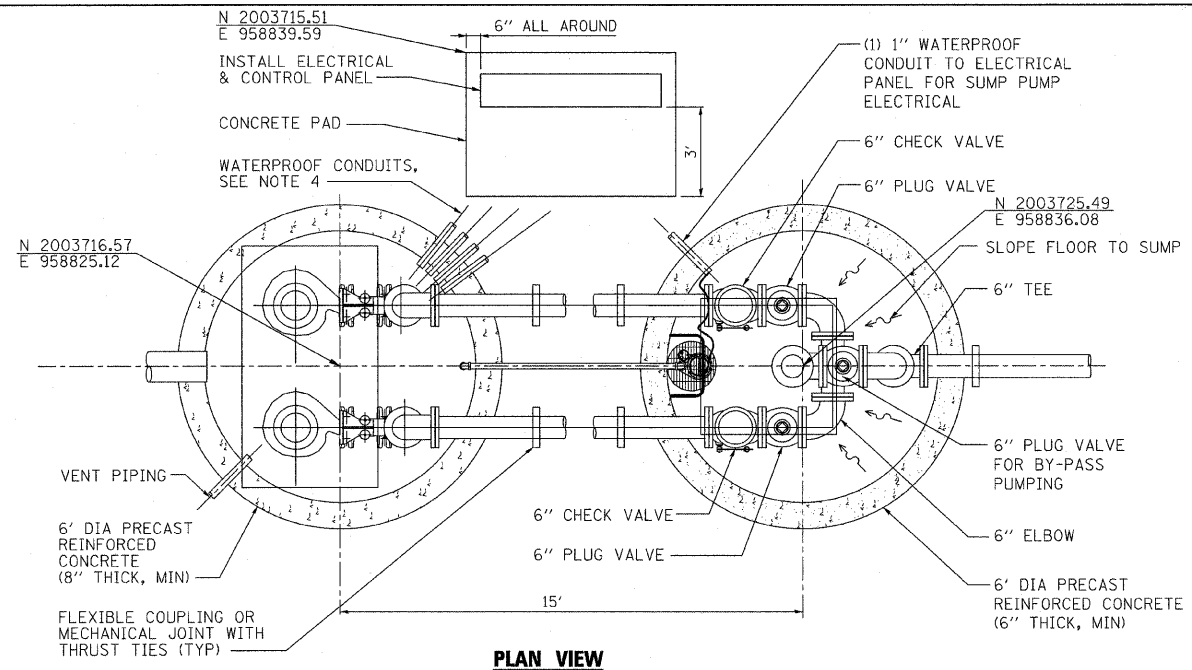
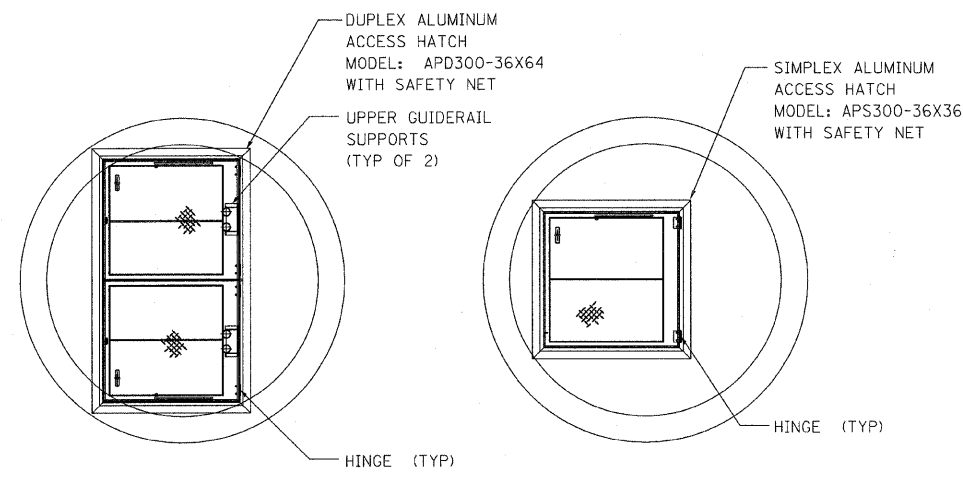


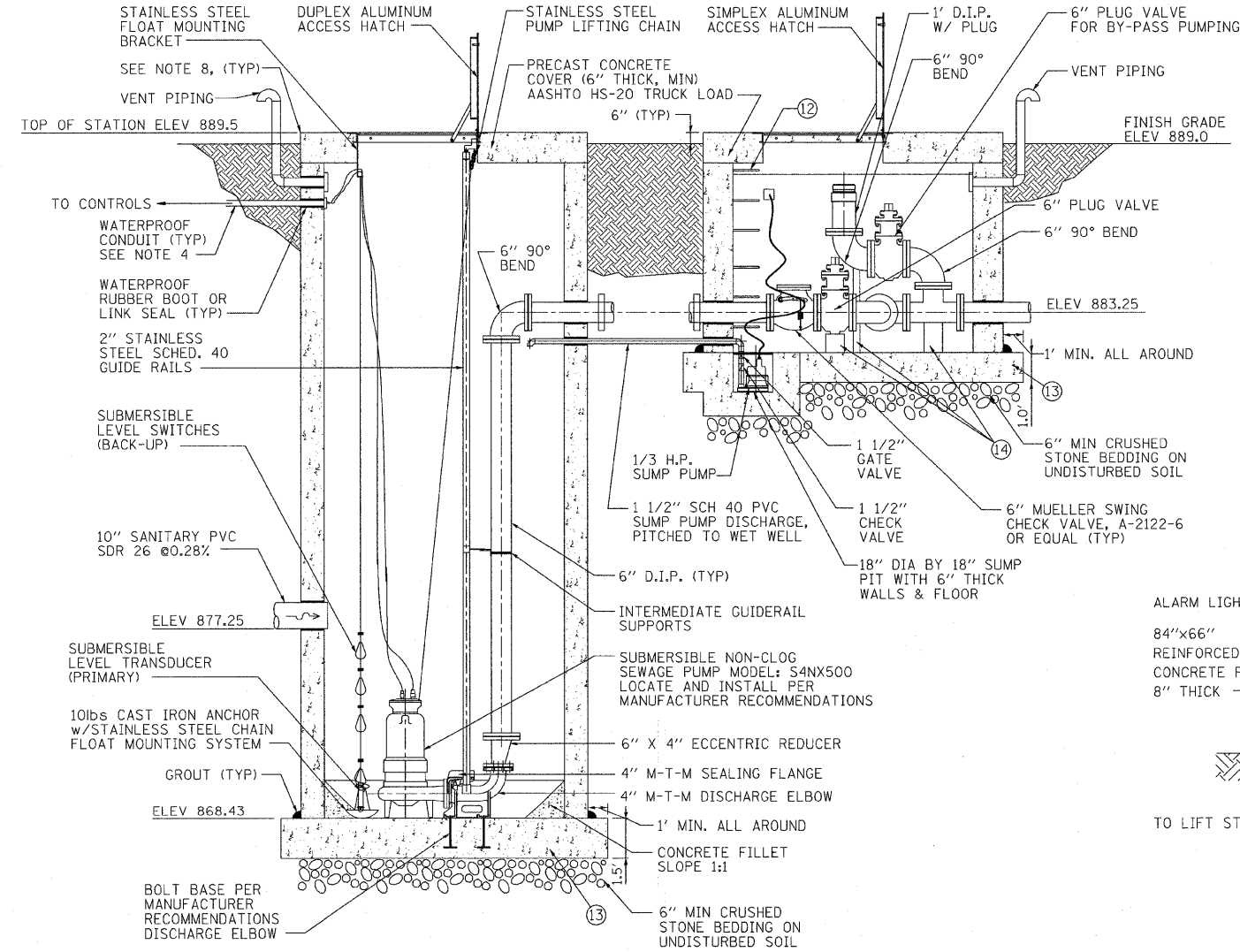
F.A.P. RTE.	SECTION	COUNTY	TOTAL SHEETS	SHEET NO.
326	*	McHENRY	502	206
STA. 9+35.22		TO STA. 142+08.53		
FED. ROAD DIST. NO.		ILLINOIS	FED. AID PROJECT	
* (105X & 106) WRS-2				



PLAN VIEW



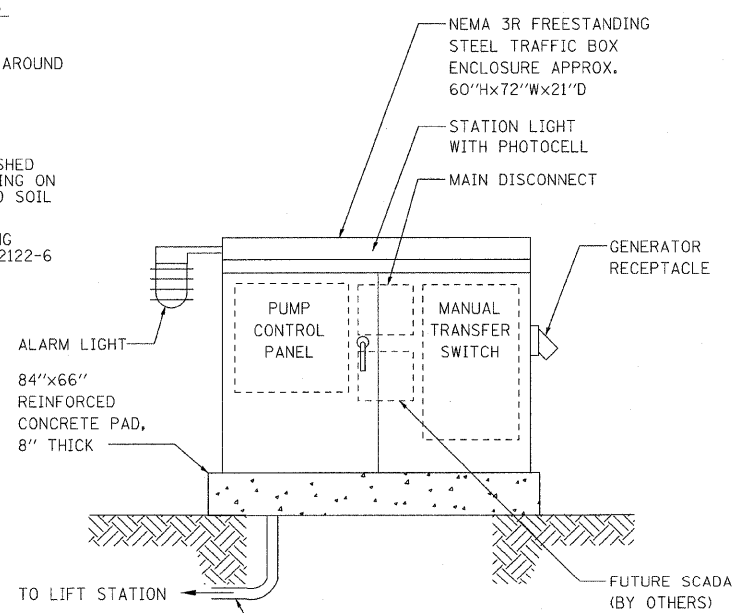
WET WELL DETAILS



STATION PROFILE

LEVEL SWITCHES

HWL ALARM	ELEV: 876.25
TWO PUMPS ON	ELEV: 875.25
ONE PUMP ON	ELEV: 874.25
PUMPS OFF	ELEV: 871.37
LWL ALARM	ELEV: 870.37



CONTROL ENCLOSURE

NOTES:

- LIFT STATION TO BE INSTALLED BY AN EXPERIENCED AND QUALIFIED CONTRACTOR.
- CONTRACTOR TO VERIFY ALL DIMENSIONS, ELEVATIONS, PIPING LAYOUT, AND ORIENTATION OF INLET(S), DISCHARGE AND CONDUIT(S).
- ALL CONCRETE, PIPING & VALVES ARE TO BE PROVIDED BY CONTRACTOR, UNLESS NOTED OTHERWISE.
- PROVIDE WATERPROOF CONDUITS AS FOLLOWS:
 (1) 2" FOR LEVEL SWITCHES
 (1) 2" FOR EACH PUMP POWER CORD AND
 (1) 1" FOR LEVEL TRANSDUCER
- CONTRACTOR TO ORDER CONTROL AND POWER CORDS OF SUFFICIENT LENGTH TO REACH CONTROL PANEL FROM POINT OF ORIGIN WITHOUT SPLICING.
- METROPOLITAN PUMP MODEL NUMBER ARE INDICATED. CONTRACTOR CAN SUBSTITUTE OTHER ALTERNATES OF SIMILAR QUALITY AND PERFORMANCE FOR APPROVAL.
- STAINLESS STEEL HARDWARE SHALL BE USED THROUGHOUT: CHAINS, NUTS, BOLTS, ETC.
- EXPOSED CONCRETE CORNERS: CHAMFER 1".
- CONTRACTOR IS RESPONSIBLE FOR PREVENTION OF FLOATATION OF STRUCTURES DURING CONSTRUCTION.
- REINFORCING CONCRETE COVER 2", 3" IF AGAINST EARTH.
- ALL REINFORCING TO CONFORM TO ACI 318.
- STEEL REINFORCED (14" WIDE POLYURETHANE STEPS @ 16" O.C. AND EXTENDING 7" FROM WALL, FIRST STEP @ 11" FROM ACCESS DOOR BOTTOM.
- PRECAST OR POURED CONCRETE BASE, ROUND OR SQUARE AT CONTRACTOR'S OPTION. REINFORCE WITH #5 @ 10" E.W., TOP AND BOTTOM.
- CONCRETE PIPE SADDLE SUPPORTS.

REVISIONS	
NAME	DATE

ILLINOIS DEPARTMENT OF TRANSPORTATION
ILLINOIS ROUTE 47
LIFT STATION DETAILS

SCALE: VERT. NO SCALE
 HORIZ. DATE: 8/5/2009

DRAWN BY: E.D.
 CHECKED BY: Z.M.



PLOT DATE = Wednesday, October 14, 2009
 FILE NAME = S:\11-CADD\11-lift\206-sm_lift_sta.dwg
 PLOT SCALE = 200
 USER NAME = 3676

10/27/2009