

F.A.P. RTE.	SECTION	COUNTY	TOTAL SHEETS	SHEET NO.
326	•	McHENRY	502	210
STA. 9+35.22		TO STA. 142+08.53		
FED. ROAD DIST. NO.		ILLINOIS	FED. AID PROJECT	
• (105X & 106) WRS-2				

TESTING SERVICE CORPORATION
LEGEND FOR BORING LOGS

SAMPLE TYPE:
SS = Split Spoon
ST = Thin-Walled Tube
A = Auger

FIELD AND LABORATORY TEST DATA:
N = Standard Penetration Resistance in Blows per Foot
Wc = In-Situ Water Content
Qu = Unconfined Compressive Strength in Tons per Square Foot
* Pocket Penetrometer Measurement: Maximum Reading = 4.8 tsf
γD = Dry Unit Weight in Pounds per Cubic Foot

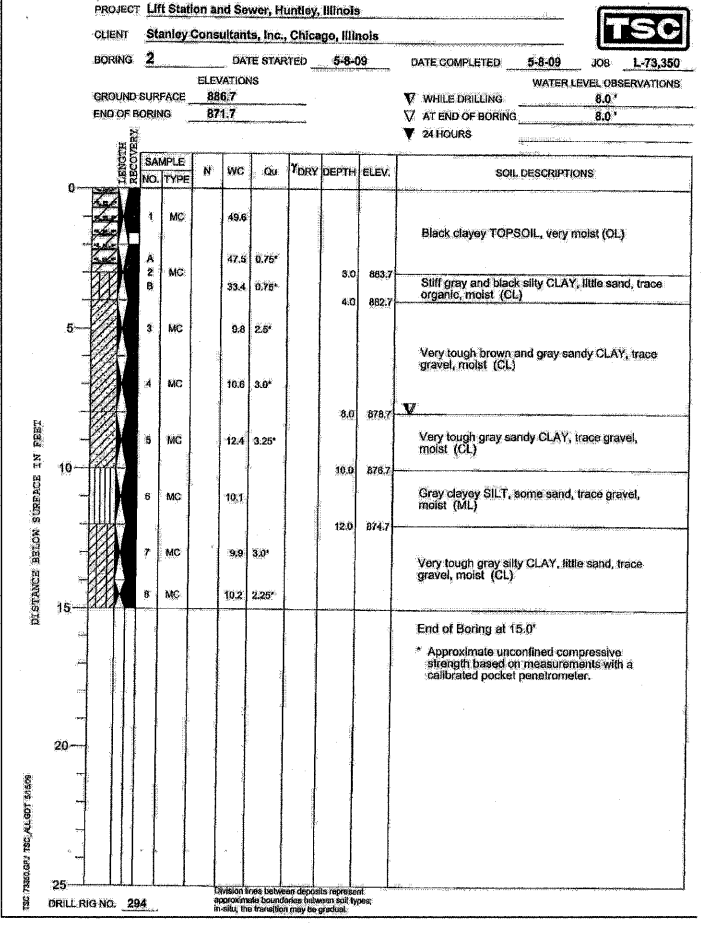
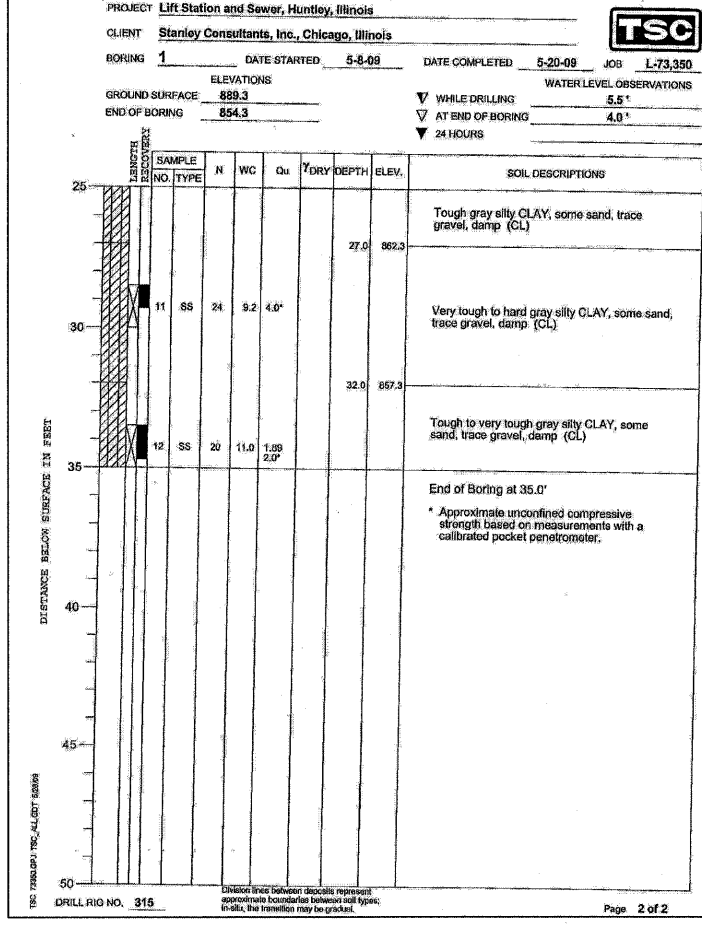
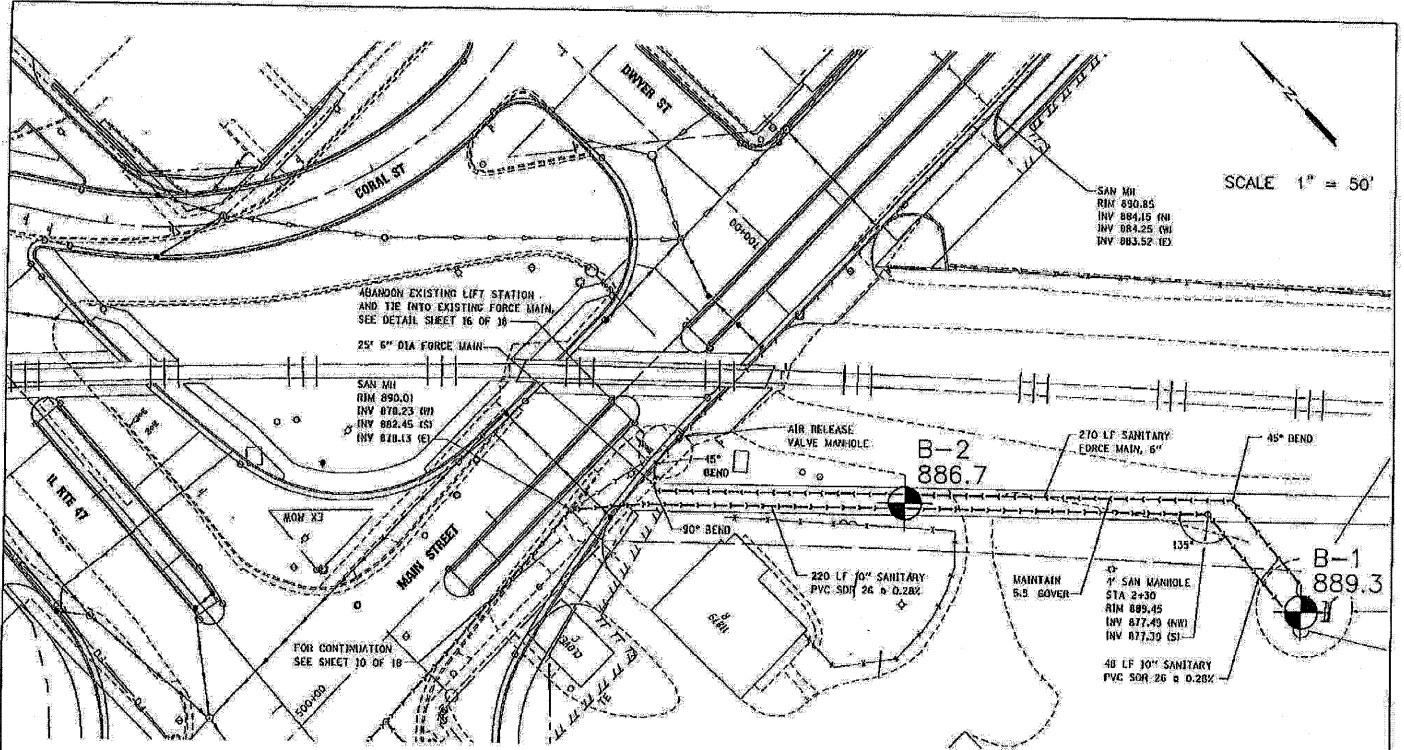
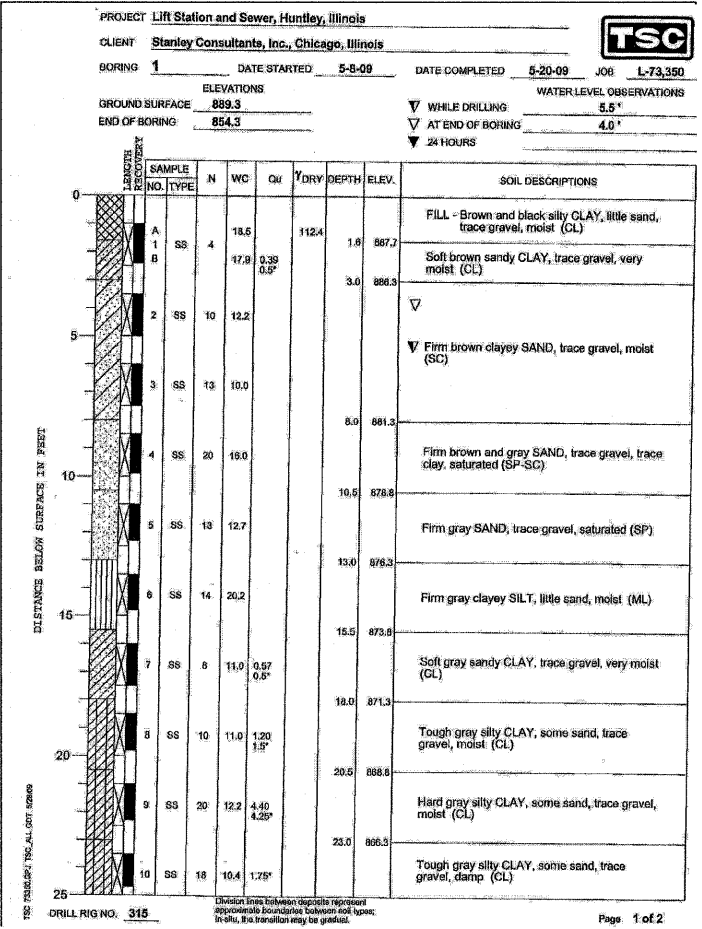
WATER LEVELS:
▽ While Drilling
▽ End of Boring
▽ 24 Hours

SOIL DESCRIPTION:

MATERIAL	PARTICLE SIZE RANGE
BOULDER	Over 12 inches
COBBLE	12 inches to 3 inches
Coarse GRAVEL	3/8 inch to 3/4 inch
Small GRAVEL	3/4 inch to No. 4 Sieve
Coarse SAND	No. 4 Sieve to No. 10 Sieve
Medium SAND	No. 10 Sieve to No. 40 Sieve
Fine SAND	No. 40 Sieve to No. 200 Sieve
SILT and CLAY	Passing No. 200 Sieve

COHESIVE SOILS		COHESIONLESS SOILS	
CONSISTENCY	Qu	RELATIVE DENSITY	N
Very Soft	Less than 0.3	Very Loose	0 - 4
Soft	0.3 to 0.6	Loose	4 - 10
Stiff	0.6 to 1.0	Firm	10 - 30
Tough	1.0 to 2.0	Dense	30 - 50
Very Tough	2.0 to 4.0	Very Dense	50 and over
Hard	4.0 and over		

MODIFYING TERM	PERCENT BY WEIGHT
Trace	1 - 10
Little	10 - 20
Some	20 - 35



BORING LOCATION PLAN
PROPOSED LIFT STATION AND SEWER
HUNTLEY, ILLINOIS

TESTING SERVICE CORPORATION
457 EAST GUNDERSEN DRIVE
CAROL STREAM, ILLINOIS 60188

DRAWN BY: TRP
CHECKED BY: CRD
JOB NO.: L-73,350
DATE: 05-15-09

PAGE NO. 1 OF 1

PLOT DATE = Wednesday, October 14, 2009
FILE NAME = S:\11-CADD\11-int\210_fm.tbl bor.dgn
PLOT SCALE = 2881
USER NAME = j3678



REVISIONS	
NAME	DATE

ILLINOIS DEPARTMENT OF TRANSPORTATION
ILLINOIS ROUTE 47
SOIL BORING

SCALE: VERT. NO SCALE
HORIZ. DATE: 8/5/2009

DRAWN BY: E.D.
CHECKED BY: Z.M.

10/27/2009