

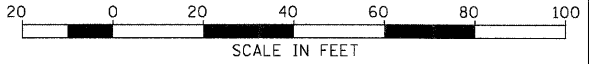
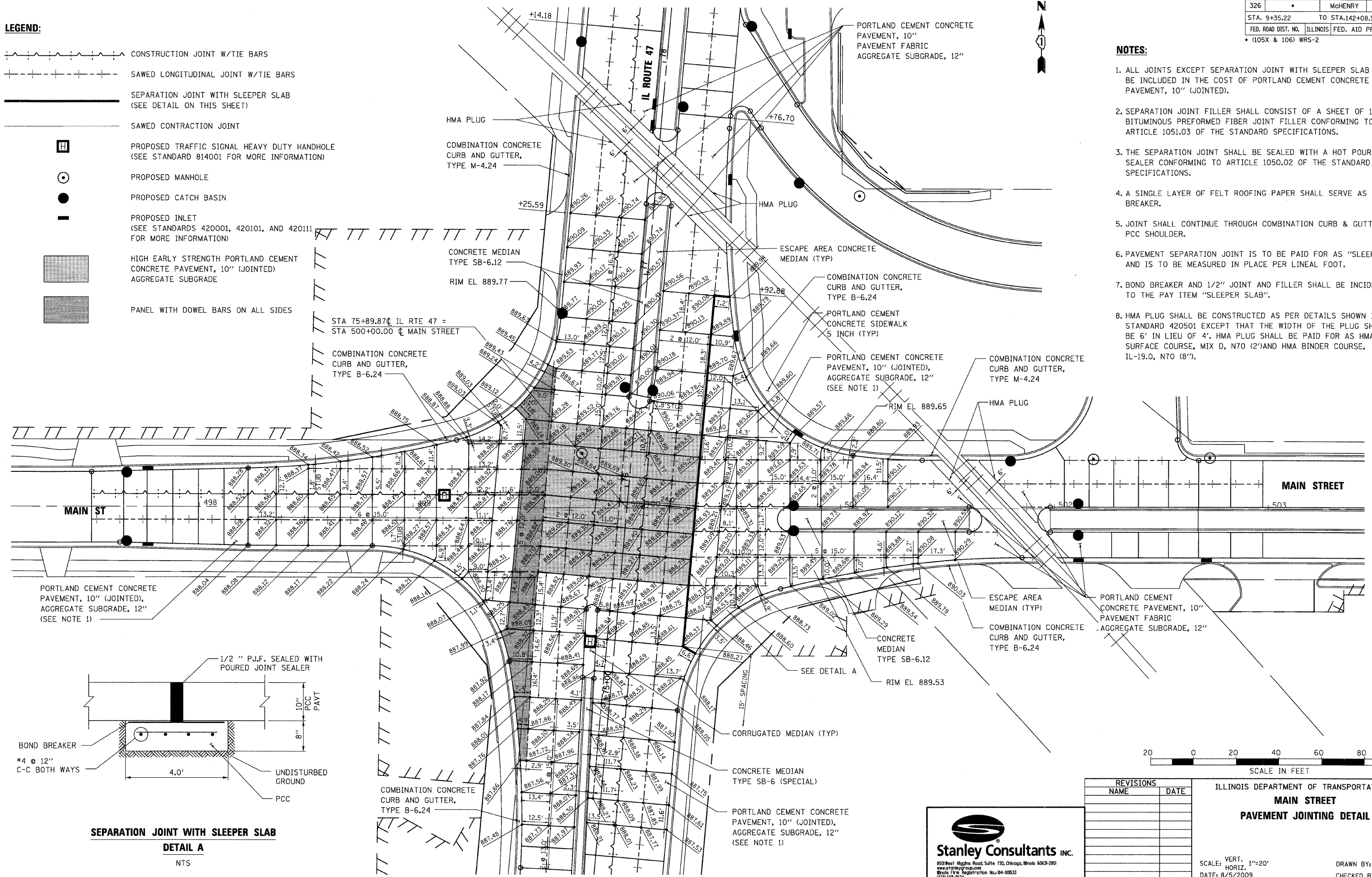
F.A.P. RTE.	SECTION	COUNTY	TOTAL SHEETS	SHEET NO.
326	*	McHENRY	502	251
STA. 9+35.22 TO STA.142+08.53				
FED. ROAD DIST. NO. ILLINOIS FED. AID PROJECT				
* (105X & 106) WRS-2				

LEGEND:

- CONSTRUCTION JOINT W/TIE BARS
- SAWED LONGITUDINAL JOINT W/TIE BARS
- SEPARATION JOINT WITH SLEEPER SLAB (SEE DETAIL ON THIS SHEET)
- SAWED CONTRACTION JOINT
- PROPOSED TRAFFIC SIGNAL HEAVY DUTY HANDHOLE (SEE STANDARD 814001 FOR MORE INFORMATION)
- PROPOSED MANHOLE
- PROPOSED CATCH BASIN
- PROPOSED INLET (SEE STANDARDS 420001, 420101, AND 420111 FOR MORE INFORMATION)
- HIGH EARLY STRENGTH PORTLAND CEMENT CONCRETE PAVEMENT, 10" (JOINTED) AGGREGATE SUBGRADE
- PANEL WITH DOWEL BARS ON ALL SIDES

NOTES:

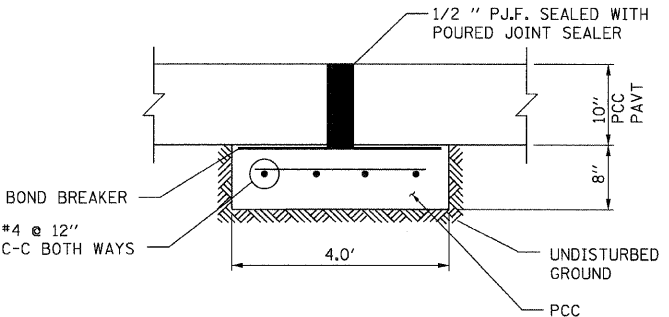
1. ALL JOINTS EXCEPT SEPARATION JOINT WITH SLEEPER SLAB SHALL BE INCLUDED IN THE COST OF PORTLAND CEMENT CONCRETE PAVEMENT, 10" (JOINTED).
2. SEPARATION JOINT FILLER SHALL CONSIST OF A SHEET OF 1/2" BITUMINOUS PERFORMED FIBER JOINT FILLER CONFORMING TO ARTICLE 1051.03 OF THE STANDARD SPECIFICATIONS.
3. THE SEPARATION JOINT SHALL BE SEALED WITH A HOT POUR JOINT SEALER CONFORMING TO ARTICLE 1050.02 OF THE STANDARD SPECIFICATIONS.
4. A SINGLE LAYER OF FELT ROOFING PAPER SHALL SERVE AS A BOND BREAKER.
5. JOINT SHALL CONTINUE THROUGH COMBINATION CURB & GUTTER OR PCC SHOULDER.
6. PAVEMENT SEPARATION JOINT IS TO BE PAID FOR AS "SLEEPER SLAB" AND IS TO BE MEASURED IN PLACE PER LINEAL FOOT.
7. BOND BREAKER AND 1/2" JOINT AND FILLER SHALL BE INCIDENTAL TO THE PAY ITEM "SLEEPER SLAB".
8. HMA PLUG SHALL BE CONSTRUCTED AS PER DETAILS SHOWN IN STANDARD 420501 EXCEPT THAT THE WIDTH OF THE PLUG SHALL BE 6' IN LIEU OF 4'. HMA PLUG SHALL BE PAID FOR AS HMA SURFACE COURSE, MIX D, N70 (2') AND HMA BINDER COURSE, IL-19.0, N70 (8").



SEPARATION JOINT WITH SLEEPER SLAB

DETAIL A

NTS



REVISIONS	
NAME	DATE

ILLINOIS DEPARTMENT OF TRANSPORTATION
MAIN STREET
PAVEMENT JOINTING DETAIL

SCALE: VERT. 1"=20'
HORIZ. 1"=20'
DATE: 8/5/2009
DRAWN BY: E.D.
CHECKED BY: B.S.

Stanley Consultants INC.
850 West Higgins Road, Suite 750, Chicago, Illinois 60639-2801
www.stanleygroup.com
Illinois Firm Registration No. 04-00533
1729 693-824

PLOT DATE = Friday, August 07, 2009
 FILE NAME = S:\11-CADD\01-INT\251-INT-detail-a-main.dgn
 PLOT SCALE = 2841
 USER NAME = 3679