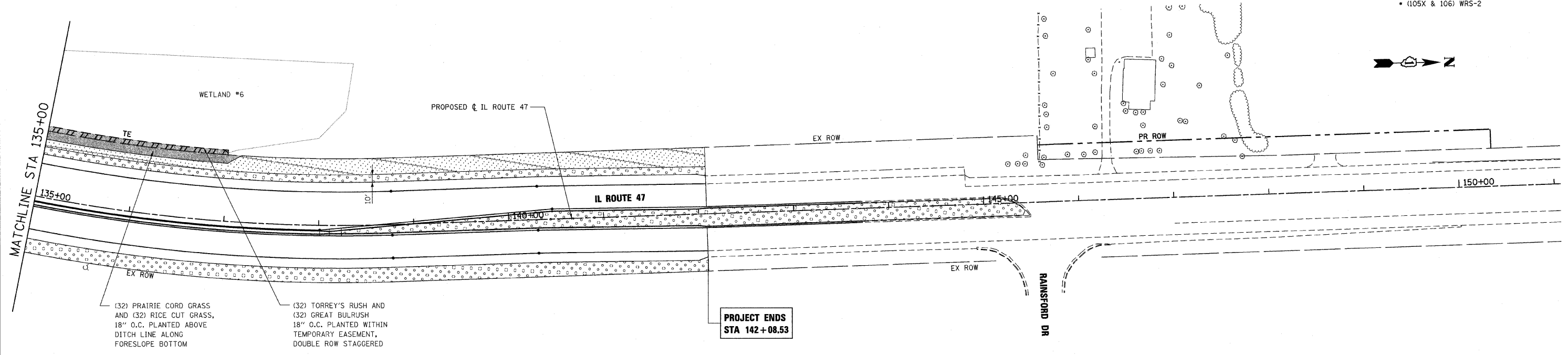


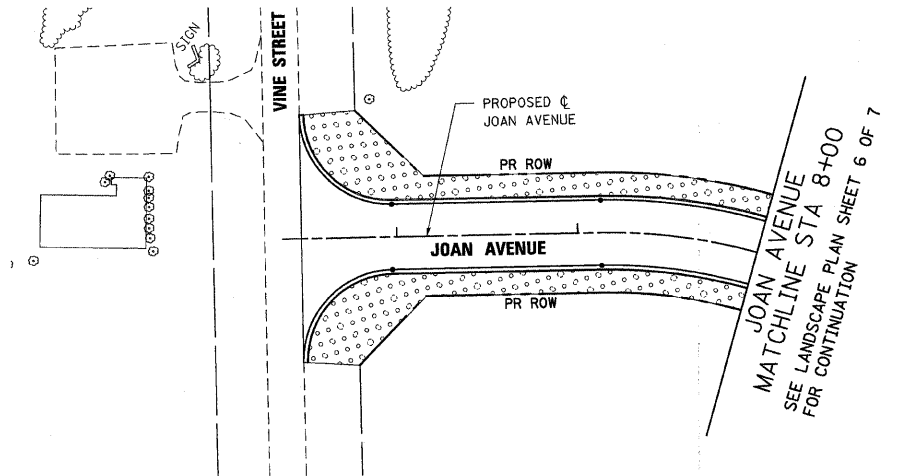
F.A.P. RTE.	SECTION	COUNTY	TOTAL SHEETS	SHEET NO.
326	•	McHENRY	502	267
STA. 9+35.22		TO STA. 142+08.53		
FED. ROAD DIST. NO.		ILLINOIS FED. AID PROJECT		
• (105X & 106) WRS-2				



(32) PRAIRIE CORD GRASS AND (32) RICE CUT GRASS, 18" O.C. PLANTED ABOVE DITCH LINE ALONG FORESLOPE BOTTOM

(32) TORREY'S RUSH AND (32) GREAT BULRUSH 18" O.C. PLANTED WITHIN TEMPORARY EASEMENT, DOUBLE ROW STAGGERED

**PROJECT ENDS
STA 142+08.53**



LEGEND:

- SODDING SALT TOLERANT
- SEEDING, CLASS 2A
- SEEDING, CLASS 4

NOTE:

SEEDING CLASS 4 SHALL BE APPLIED BEHIND GUARDRAIL, WITHIN TEMPORARY EASEMENT AND ON BACKSLOPE AS SHOWN OR DIRECTED BY ENGINEER.

PLOT DATE = Tuesday, October 27, 2009
 FILE NAME = S:\1-CADD\1-hh\267_land_hh47.dgn
 PLOT SCALE = 50%
 USER NAME = 3859

REVISIONS	
NAME	DATE

ILLINOIS DEPARTMENT OF TRANSPORTATION
ILLINOIS ROUTE 47
LANDSCAPING PLAN
SHEET 7 OF 7

850 West Higgins Road, Suite 130, Chicago, Illinois 60639-2801
 www.stanleygroup.com
 Illinois Firm Registration No. 04-00533
 (773) 693-9624

SCALE: VERT. 1"=50'
 HORIZ. 1"=50'
 DATE: 10/27/2009

DRAWN BY: E.D.
 CHECKED BY: A.A.C.