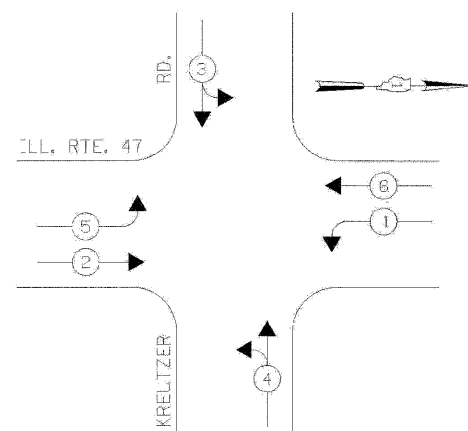
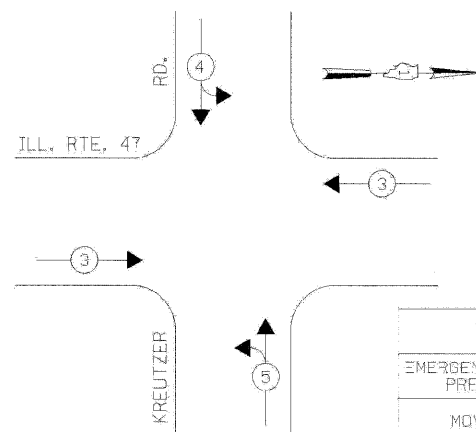


F.A.P. RTE.	SECTION	COUNTY	TOTAL SHEETS	SHEET NO.
326	*	MCHEMRY	502	276
STA. 9+35.22		TO STA.142+08.53		
FED. ROAD DIST. NO.		ILLINOIS	FED. AID PROJECT	

CONTROLLER SEQUENCE



EMERGENCY VEHICLE PREFMPTION SEQUENCE



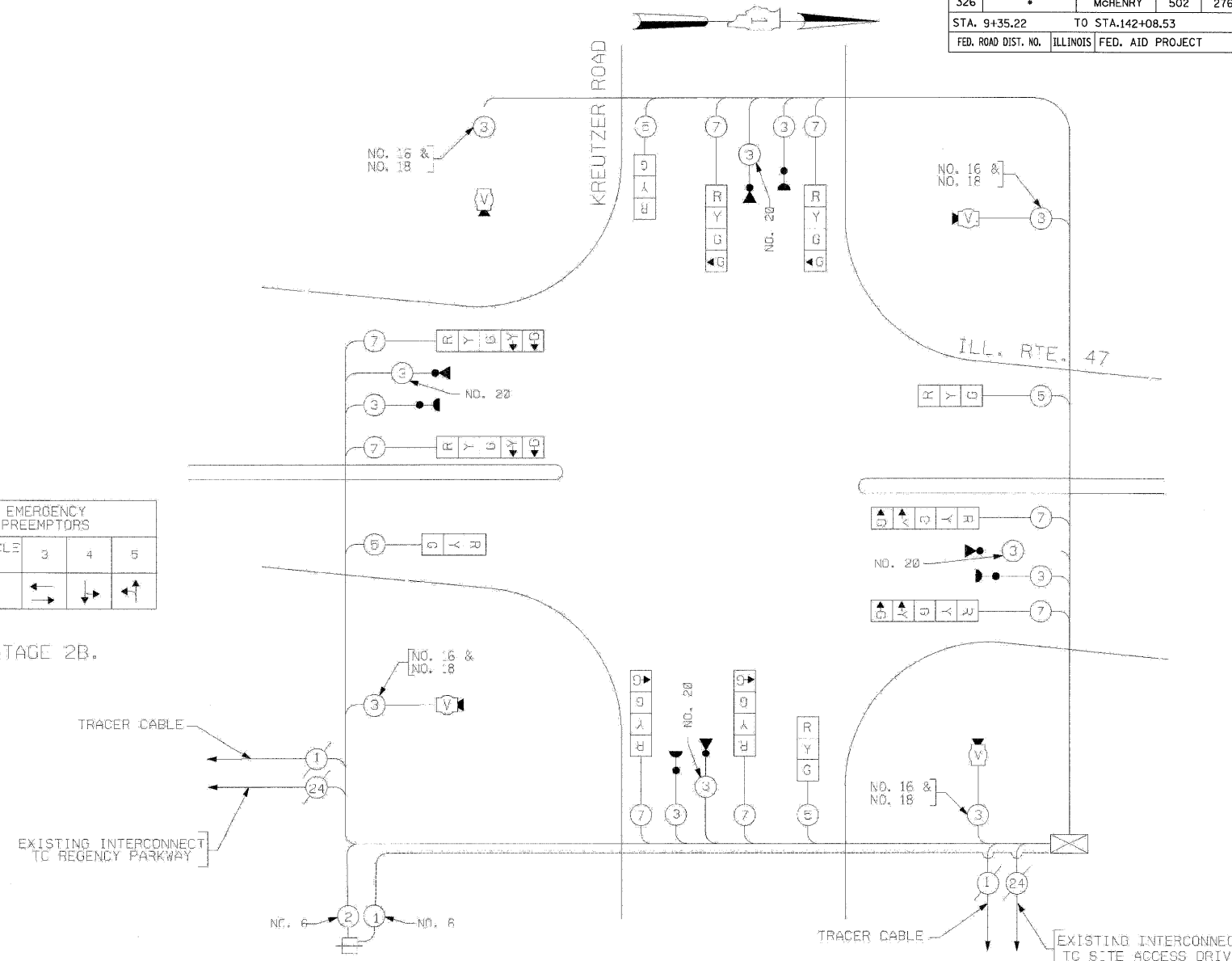
EMERGENCY VEHICLE PREFMPTION	3	4	5
MOVEMENT	←	↓	↑

STAGES: STAGE 1, STAGE 1B, STAGE 2, AND STAGE 2B.

TEMPORARY PHASE DESIGNATION DIAGRAM

STAGES: STAGE 1, STAGE 1B, STAGE 2, AND STAGE 2B.

THE TRAFFIC SIGNAL CONTROL EQUIPMENT FOR THIS PROJECT SHALL BE "EAGLE" TO MATCH THE EXISTING ADJACENT SYSTEM.



TEMPORARY CABLE PLAN

(NOT TO SCALE)

STAGES: STAGE 1, STAGE 1B, STAGE 2, AND STAGE 2B

TEMPORARY CABLE DIAGRAM LEGEND

- [R] TEMPORARY TRAFFIC SIGNAL SECTION OR PEDESTRIAN SIGNAL SECTION 12" (300MM)
- [X] TEMPORARY CONTROL CABINET
- [S] TEMPORARY SERVICE INSTALLATION
- (5) INDICATES NUMBER OF CONDUCTORS IN CABLE. ALL CONDUCTORS TO BE NUMBER 14 AWG WIRE UNLESS OTHERWISE NOTED.
- [V] EMERGENCY VEHICLE LIGHT DETECTOR
- [C] CONFIRMATION BEACON
- [D] VEHICLE DETECTOR, INDUCTION LOOP
- [P] PEDESTRIAN PUSHBUTTON DETECTOR
- [E] 12" (300MM) PEDESTRIAN SIGNAL SECTION
- [M] MICROWAVE VEHICLE SENSOR
- [V] VIDEO CAMERA ASSEMBLY
- [C] CO-AXIAL VIDEO CABLE

NOTE 1: ALL THE TEMPORARY TRAFFIC SIGNAL HEADS SHALL BE LED TYPE

I.D.D.T.					TOTAL WATTAGE
TRAFFIC SIGNAL INSTALLATION ELECTRICAL SERVICE REQUIREMENTS					
TYPE	NO LAMPS	WATTAGE		OPERATION	TOTAL WATTAGE
		INCAND.	LED		
SIGNAL (RED)	12	135	17	0.50	182
(YELLOW)	12	135	25	0.25	75
(GREEN)	16	135	15	0.25	60
ARROW	8	135	12	0.10	9.6
PED. SIGNAL	1	90	25	1.00	120
CONTROLLER ILLUM. SIGN	1	100	100	0.05	
FLASHER				0.50	
ENERGY COSTS TO:				TOTAL =	346.6
ILLINOIS DEPARTMENT OF TRANSPORTATION 201 WEST CENTER COURT SCHAMBURG, ILLINOIS 60196-1096					
ENERGY SUPPLY CONTACT: KATIE OLIVA PHONE: (847) 608-2338 COMPANY: COMED					

REVISIONS	
NAME	DATE

ILLINOIS DEPARTMENT OF TRANSPORTATION
TEMPORARY CABLE PLAN,
ILLINOIS ROUTE 47 AT KREUTZER ROAD
STAGE 1, STAGE 1B, STAGE 2,
AND STAGE 2B
(SHEET 4 OF 7)

SCALE: N.T.S.
DATE: APRIL 17, 2009
DRAWN BY: ME,MA,YB
DESIGNED BY: PKG/RRM
CHECKED BY: PKG/RRM

GO GANDHI AND ASSOCIATES, INC.
ENGINEERS AND PLANNERS
8038 N. NORTHEAST HIGHWAY
SUITE 303
CHICAGO, ILLINOIS 60631 TEL: (773) 774-5990