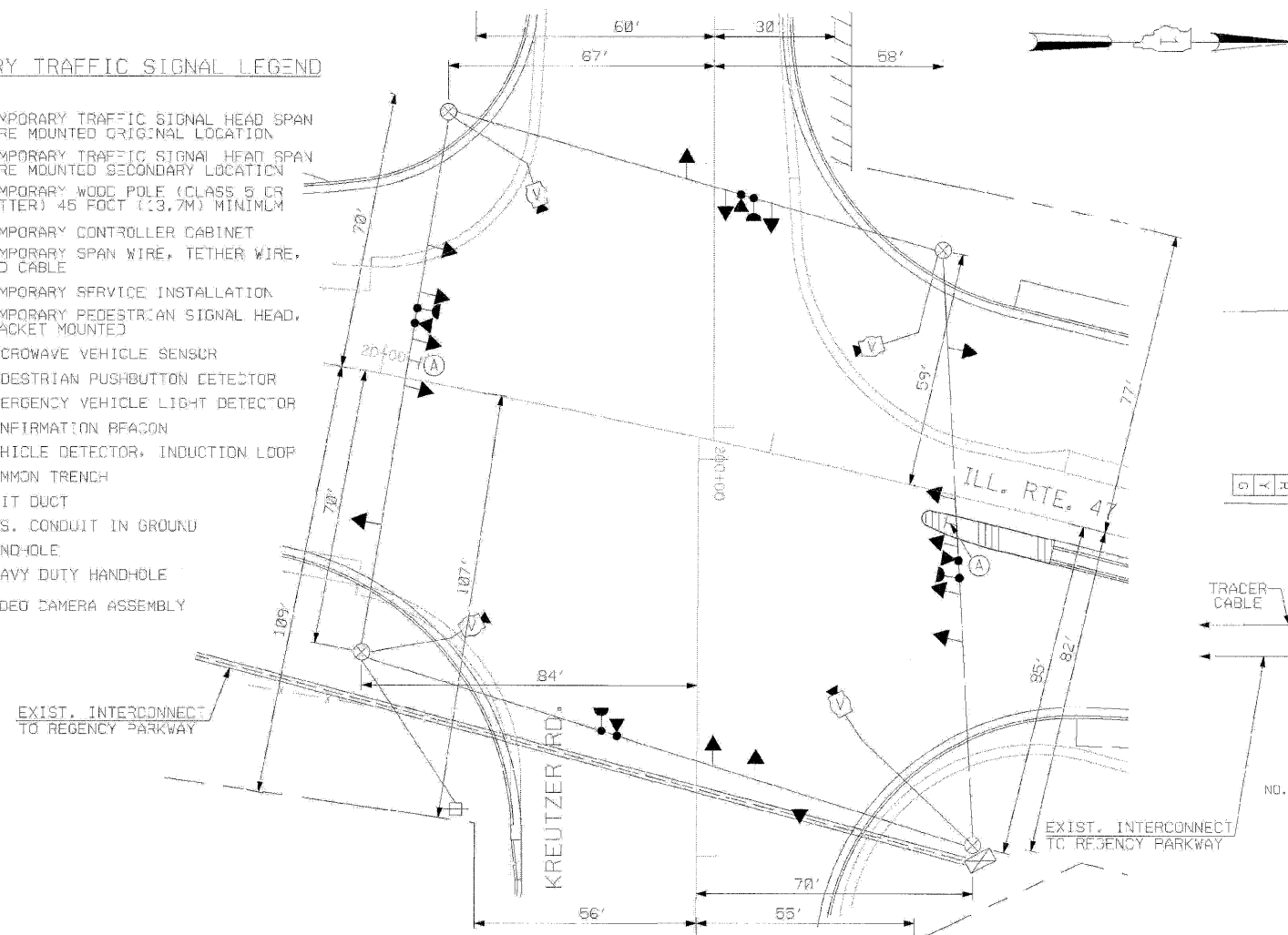


F.A.P. RTE.	SECTION	COUNTY	TOTAL SHEETS	SHEET NO.
326		MCHENRY	502	279
STA. 9+35.22		TO STA. 142+08.53		
FED. ROAD DIST. NO. ILLINOIS FED. AID PROJECT				

TEMPORARY TRAFFIC SIGNAL LEGEND

- ← TEMPORARY TRAFFIC SIGNAL HEAD SPAN WIRE MOUNTED ORIGINAL LOCATION
- ↔ TEMPORARY TRAFFIC SIGNAL HEAD SPAN WIRE MOUNTED SECONDARY LOCATION
- ⊗ TEMPORARY WOOD POLE (CLASS 5 OR BETTER) 45' FOOT (13.7M) MINIMUM
- ⊠ TEMPORARY CONTROLLER CABINET
- ⊞ TEMPORARY SPAN WIRE, TETHER WIRE, AND CABLE
- ⊞ TEMPORARY SERVICE INSTALLATION
- ⊞ TEMPORARY PEDESTRIAN SIGNAL HEAD, BRACKET MOUNTED
- ⊞ MICROWAVE VEHICLE SENSOR
- ⊞ PEDESTRIAN PUSHBUTTON DETECTOR
- ⊞ EMERGENCY VEHICLE LIGHT DETECTOR
- ⊞ CONFIRMATION BEACON
- ⊞ VEHICLE DETECTOR, INDUCTION LOOP
- CT COMMON TRENCH
- UD UNIT DUCT
- G.S. CONDUIT IN GROUND
- HANDLE
- HEAVY DUTY HANDLE
- VIDEO CAMERA ASSEMBLY



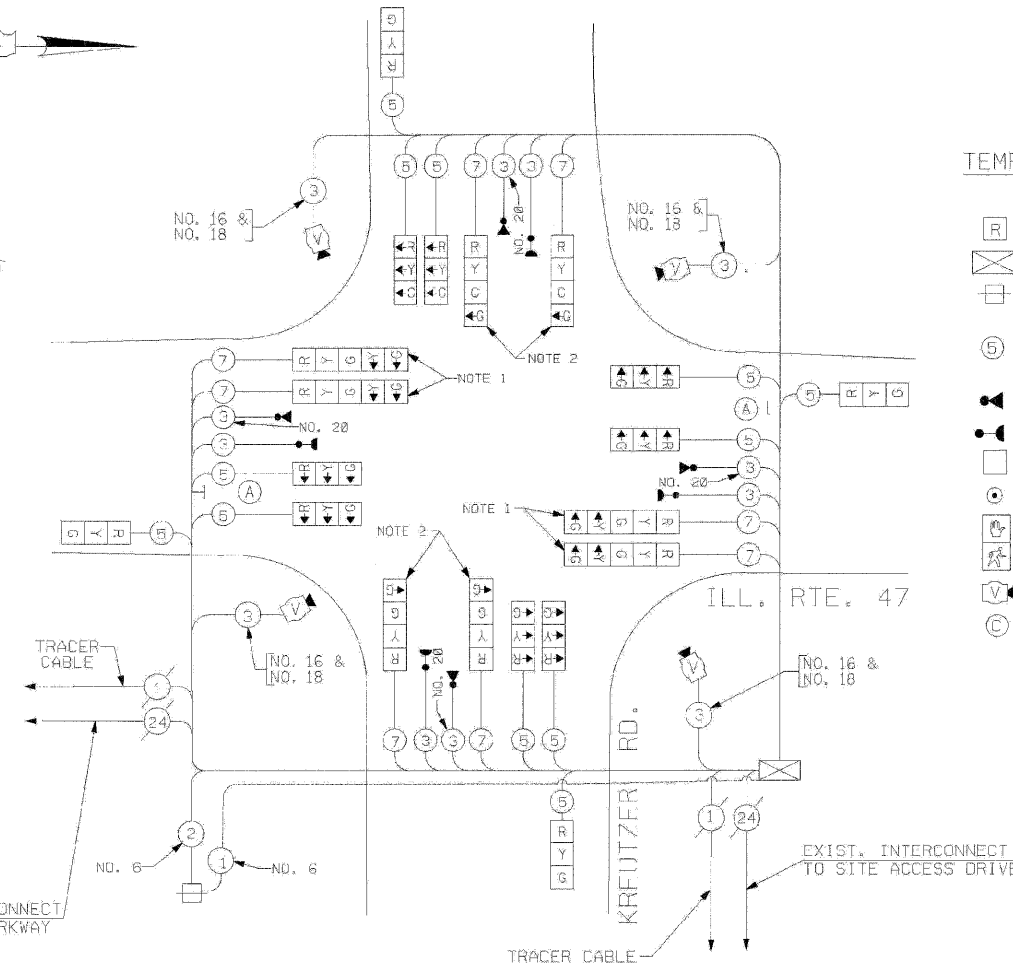
TEMPORARY TRAFFIC SIGNAL PLAN

(SCALE: 1"=20')

STAGES: AFTER ALL THE ROADWAY GEOMETRICS ARE BUILT AND OPEN TO TRAFFIC

TEMPORARY CABLE DIAGRAM LEGEND

- ⊞ TEMPORARY TRAFFIC SIGNAL SECTION OR PEDESTRIAN SIGNAL SECTION 12" (300MM)
- ⊞ TEMPORARY CONTROLLER CABINET
- ⊞ TEMPORARY SERVICE INSTALLATION
- ⊞ INDICATES NUMBER OF CONDUCTORS IN CABLE, ALL CONDUCTORS TO BE NUMBER 14 AWG WIRE UNLESS OTHERWISE NOTED.
- ⊞ EMERGENCY VEHICLE LIGHT DETECTOR
- ⊞ CONFIRMATION BEACON
- ⊞ VEHICLE DETECTOR, INDUCTION LOOP
- ⊞ PEDESTRIAN PUSHBUTTON DETECTOR
- ⊞ 12" (300MM) PEDESTRIAN SIGNAL SECTION
- ⊞ VIDEO CAMERA ASSEMBLY
- ⊞ CO-AXIAL VIDEO CABLE



TEMPORARY CABLE PLAN

(NOT TO SCALE)

STAGES: AFTER ALL THE ROADWAY GEOMETRICS ARE BUILT AND OPEN TO TRAFFIC

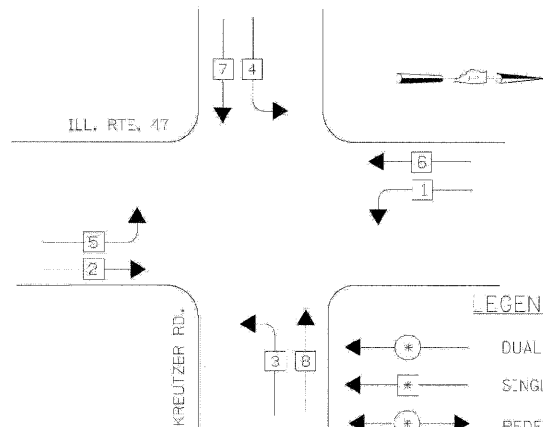
NOTE 1: AFTER ALL THE ROADWAY GEOMETRICS ARE BUILT AND OPEN TO TRAFFIC, THE GREEN AND YELLOW LEFT ARROW INDICATION SECTIONS FOR THE NORTHBOUND AND SOUTHBOUND DIRECTION OF TRAFFIC SHALL BE BAGGED AND DISCONNECTED AT THE CONTROLLER.

NOTE 2: THE GREEN LEFT ARROW SECTION IN THE FOUR (4) SECTION SIGNAL HEAD SHALL BE BAGGED AND DISCONNECTED AT THE CONTROLLER AFTER ALL THE PROPOSED ROADWAY GEOMETRICS ARE BUILT AND OPEN TO TRAFFIC.

NOTE 3: ALL THE VIDEO DETECTION ZONES SHALL BE REDEFINED FOR EACH CONSTRUCTION STAGE. THIS WORK IS INCIDENTAL TO THE PAY ITEM 'MODIFY TEMPORARY TRAFFIC SIGNAL INSTALLATION'.

NOTE 4: ALL THE TEMPORARY TRAFFIC SIGNAL HEADS SHALL BE LED TYPE.

CONTROLLER SEQUENCE



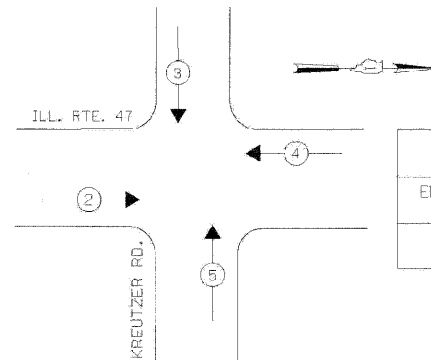
TEMPORARY PHASE DESIGNATION DIAGRAM
STAGES: AFTER ALL THE ROADWAY GEOMETRICS ARE BUILT AND OPEN TO TRAFFIC

A

- LEFT ON GREEN
- ARROW
- CNLY

R10-5, 24" X 30"
(2 REQUIRED, INCIDENTA.)

EMERGENCY VEHICLE PREEMPTION SEQUENCE



STAGES: AFTER ALL THE ROADWAY GEOMETRICS ARE BUILT AND OPEN TO TRAFFIC

PROPOSED EMERGENCY VEHICLE PREEMPTORS				
EMERGENCY VEHICLE PREEMPTOR	2	3	4	5
MOVEMENT	→	↓	←	↑

THE TRAFFIC SIGNAL CONTROL EQUIPMENT FOR THIS PROJECT SHALL BE "EAGLE" TO MATCH THE EXISTING ADJACENT SYSTEM.

I.D.O.T. TRAFFIC SIGNAL INSTALLATION ELECTRICAL SERVICE REQUIREMENTS					
TYPE	NO. LAMPS	INCAND.	LED	% OPERATION	TOTAL WATTAGE
SIGNAL (RED)	20	135	17	0.50	170
(YELLOW)	20	135	25	0.25	125
(GREEN)	24	135	15	0.25	90
ARROW		135	12	0.10	
PED. SIGNAL		90	25	1.00	
CONTROLLER	1	100	100	1.00	100
ILLUM. SIGN				0.05	
FLASHER					
ENERGY COSTS TO:				TOTAL =	485
ILLINOIS DEPARTMENT OF TRANSPORTATION 201 WEST CENTER COURT SCHAUMBURG, ILLINOIS 60196-1096					
ENERGY SUPPLY CONTACT: KATIE OLIVA PHONE: 647/ 608-2336 COMPANY: C3MED					

LEGEND

- ⊞ DUAL ENTRY PHASE
- ⊞ SINGLE ENTRY PHASE
- ⊞ PEDESTRIAN PHASE
- * NUMBER REFERS TO ASSOCIATED PHASE

REVISIONS	
NAME	DATE

ILLINOIS DEPARTMENT OF TRANSPORTATION
TEMPORARY TRAFFIC SIGNAL INSTALLATION PLAN, TEMPORARY CABLE PLAN
ILLINOIS ROUTE 47 AT KREUTZER ROAD
AFTER ALL THE ROADWAY GEOMETRICS ARE BUILT AND OPEN TO TRAFFIC (SHEET 7 OF 7)

SCALE: 1"=20'
DATE: APRIL 17, 2009

DRAWN BY: ME/MA/YB
DESIGNED BY: PKG/RHM
CHECKED BY: PKG/RHM

GO GANDHI AND ASSOCIATES, INC.
ENGINEERS AND PLANNERS
800 N. WEST STREET
SUITE 308
CHICAGO, ILLINOIS 60610 TEL: (773) 774-5990