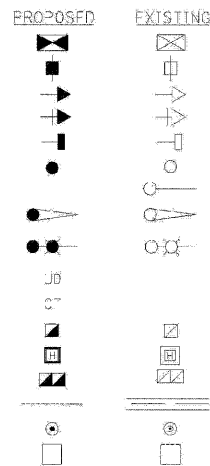


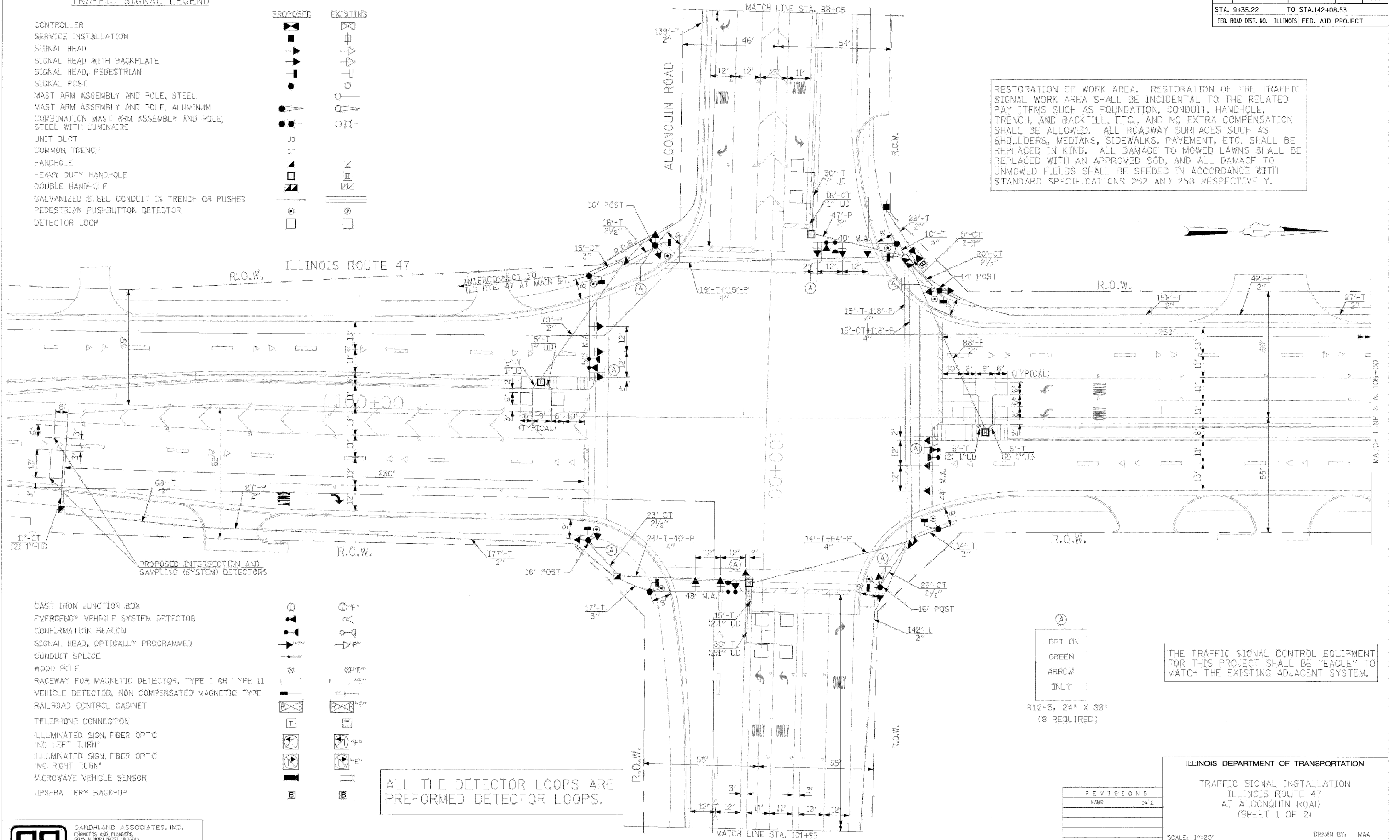
F.A.P. RTE.	SECTION	COUNTY	TOTAL SHEETS	SHEET NO.
326		McHENRY	502	300
STA. 9+35.22		TO STA. 142+08.53		
FED. ROAD DIST. NO.		ILLINOIS FED. AID PROJECT		

TRAFFIC SIGNAL LEGEND

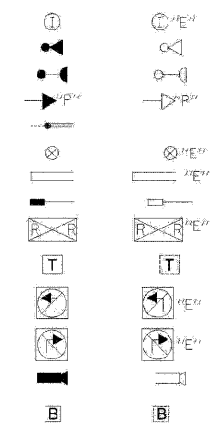
- CONTROLLER
- SERVICE INSTALLATION
- SIGNAL HEAD
- SIGNAL HEAD WITH BACKPLATE
- SIGNAL HEAD, PEDESTRIAN
- SIGNAL POST
- MAST ARM ASSEMBLY AND POLE, STEEL
- MAST ARM ASSEMBLY AND POLE, ALUMINUM
- COMBINATION MAST ARM ASSEMBLY AND POLE, STEEL WITH LUMINAIRE
- UNIT DUCT
- COMMON TRENCH
- HANDHOLE
- HEAVY DUTY HANDHOLE
- DOUBLE HANDHOLE
- GALVANIZED STEEL CONDUIT IN TRENCH OR PUSHED
- PEDESTRIAN PUSH-BUTTON DETECTOR
- DETECTOR LOOP



RESTORATION OF WORK AREA. RESTORATION OF THE TRAFFIC SIGNAL WORK AREA SHALL BE INCIDENTAL TO THE RELATED PAY ITEMS SUCH AS FOUNDATION, CONDUIT, HANDHOLE, TRENCH, AND BACK-FILL, ETC., AND NO EXTRA COMPENSATION SHALL BE ALLOWED. ALL ROADWAY SURFACES SUCH AS SHOULDERS, MEDIANS, SIDEWALKS, PAVEMENT, ETC. SHALL BE REPLACED IN KIND. ALL DAMAGE TO MOWED LAWNS SHALL BE REPLACED WITH AN APPROVED SOG, AND ALL DAMAGE TO UNMOWED FIELDS SHALL BE SEEDED IN ACCORDANCE WITH STANDARD SPECIFICATIONS 252 AND 250 RESPECTIVELY.



- CAST IRON JUNCTION BOX
- EMERGENCY VEHICLE SYSTEM DETECTOR
- CONFIRMATION BEACON
- SIGNAL HEAD, OPTICALLY PROGRAMMED
- CONDUIT SPLICE
- WOOD POLE
- RACEWAY FOR MAGNETIC DETECTOR, TYPE I OR TYPE II
- VEHICLE DETECTOR, NON COMPENSATED MAGNETIC TYPE
- RAILROAD CONTROL CABINET
- TELEPHONE CONNECTION
- ILLUMINATED SIGN, FIBER OPTIC
- "NO LEFT TURN"
- ILLUMINATED SIGN, FIBER OPTIC
- "NO RIGHT TURN"
- MICROWAVE VEHICLE SENSOR
- JPS-BATTERY BACK-UP



ALL THE DETECTOR LOOPS ARE PREFORMED DETECTOR LOOPS.

(A)
LEFT ON
GREEN
ARROW
ONLY
R10-5, 24" X 30"
(8 REQUIRED)

THE TRAFFIC SIGNAL CONTROL EQUIPMENT FOR THIS PROJECT SHALL BE "EAGLE" TO MATCH THE EXISTING ADJACENT SYSTEM.

ILLINOIS DEPARTMENT OF TRANSPORTATION
TRAFFIC SIGNAL INSTALLATION
ILLINOIS ROUTE 47
AT ALGONQUIN ROAD
(SHEET 1 OF 2)

REVISIONS	
NAME	DATE

SCALE: 1"=20'
DATE: APRIL 17, 2009
DRAWN BY: MAA
DESIGNED BY: PKG/RRM
CHECKED BY: PKG/RRM

ga GANDHI AND ASSOCIATES, INC.
ENGINEERS AND PLANNERS
8005 W. BERTHOUD HIGHWAY
SUITE 300
CHICAGO, ILLINOIS 60631 TEL: (773) 774-5800

PLOT DATE = Wednesday, August 05, 2009
FILE NAME = S:\11-0300\11-0300-0300.dwg
PLOT SCALE = 1:1
USER NAME = 3638