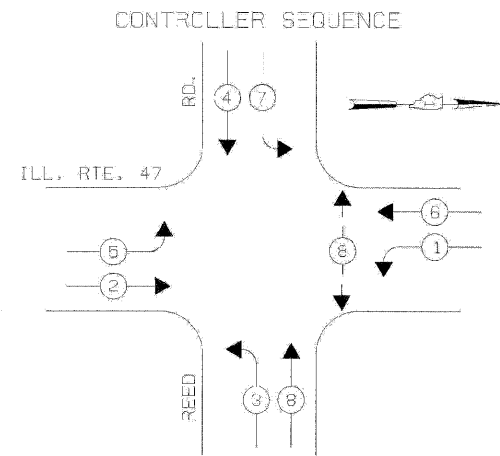
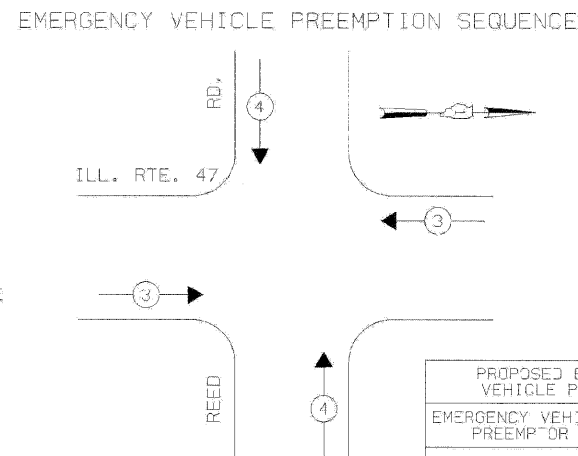


F.A.P. RTE.	SECTION	COUNTY	TOTAL SHEETS	SHEET NO.
326		MCHENRY	502	304
STA. 9+35.22		TO STA.142+08.53		
FED. ROAD DIST. NO. ILLINOIS FED. AID PROJECT				



TEMPORARY PHASE DESIGNATION DIAGRAM

STAGES: PRE-STAGE AND AFTER ALL THE ROADWAY GEOMETRICS ARE BUILT AND OPEN TO TRAFFIC, PRIOR TO PROPOSED SIGNAL BECOMES OPERATIONAL.

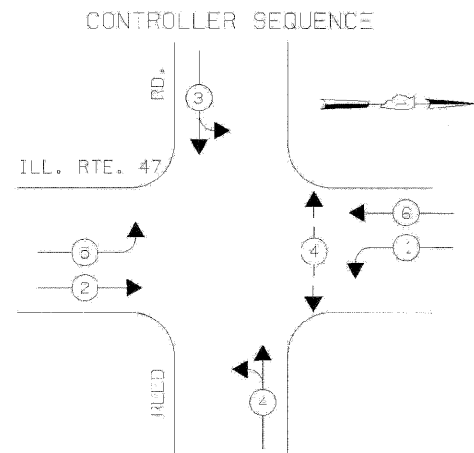


STAGES: PRE-STAGE AND AFTER ALL THE ROADWAY GEOMETRICS ARE BUILT AND OPEN TO TRAFFIC, PRIOR TO PROPOSED SIGNAL BECOMES OPERATIONAL.

- LEGEND**
- ◉ DUAL ENTRY PHASE
 - ◻ SINGLE ENTRY PHASE
 - ◊ O.L. OVERLAP
 - ◉ PEDESTRIAN PHASE
 - * NUMBER REFERS TO ASSOCIATED PHASE

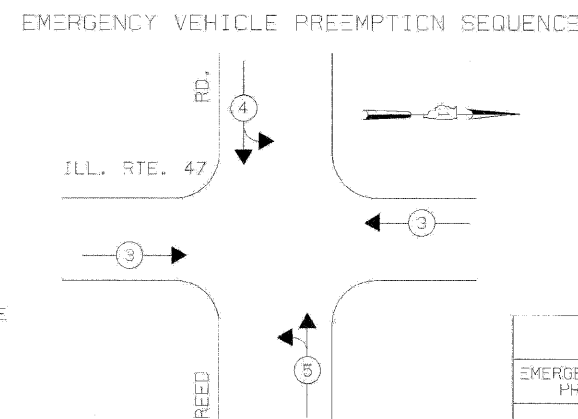
PROPOSED EMERGENCY VEHICLE PREEMPTORS

EMERGENCY VEHICLE PREEMPTOR	3	4
MOVEMENT	↔	↕



TEMPORARY PHASE DESIGNATION DIAGRAM

STAGES: STAGE 1, STAGE 1B, STAGE 2, STAGE 23.

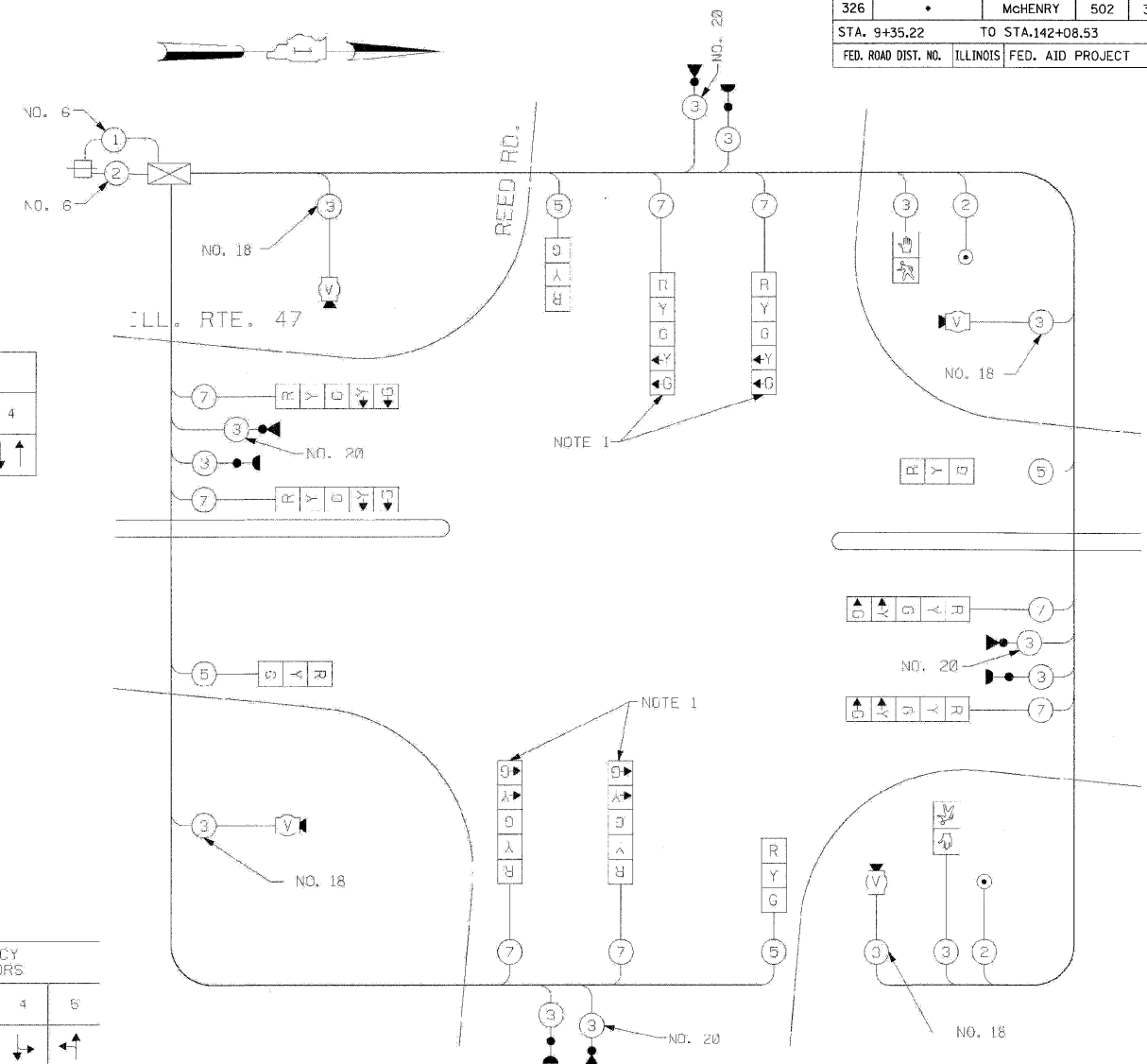


STAGES: STAGE 1, STAGE 1B, STAGE 2, STAGE 2B.

- LEGEND**
- ◉ DUAL ENTRY PHASE
 - ◻ SINGLE ENTRY PHASE
 - ◊ O.L. OVERLAP
 - ◉ PEDESTRIAN PHASE
 - * NUMBER REFERS TO ASSOCIATED PHASE

PROPOSED EMERGENCY VEHICLE PREEMPTORS

EMERGENCY VEHICLE PREEMPTOR	3	4	5
MOVEMENT	↔	↕	↕



TEMPORARY CABLE PLAN
STAGES: PRE-STAGE, STAGE 1, STAGE 1B, STAGE 2, AND STAGE 2B.

NOTE 1: DURING CONSTRUCTION STAGE 1, STAGE 1B, STAGE 2, AND STAGE 2B THE YELLOW LEFT ARROW INDICATION SECTION FOR EASTBOUND AND WESTBOUND DIRECTION OF TRAFFIC SHALL BE BAGGED AND DISCONNECTED AT THE CONTROLLER AND APPLICABLE PHASES SHALL BE DISABLED IN THE CONTROLLER. THE YELLOW LEFT ARROW FOR EASTBOUND AND WESTBOUND DIRECTION SHALL REMAIN BAGGED DURING CONSTRUCTION STAGE 3, STAGE 3B, AND STAGE 3C ALSO.

NOTE 2: ALL THE VIDEO DETECTION ZONES SHALL BE REDEFINED FOR EACH CONSTRUCTION STAGE. THIS WORK IS INCIDENTAL TO THE PAY ITEM "TEMPORARY TRAFFIC SIGNAL INSTALLATION."

NOTE 3: ALL THE TEMPORARY TRAFFIC SIGNAL HEADS SHALL BE LED TYPE.

THE TRAFFIC SIGNAL CONTROL EQUIPMENT FOR THIS PROJECT SHALL BE "EAGLE" TO MATCH THE EXISTING ADJACENT SYSTEM.

TEMPORARY CABLE DIAGRAM LEGEND

- ◻ TEMPORARY TRAFFIC SIGNAL SECTION OR PEDESTRIAN SIGNAL SECTION 12" (300MM)
- ◻ TEMPORARY CONTROLLER CABINET
- ◻ TEMPORARY SERVICE INSTALLATION
- ⑤ INDICATES NUMBER OF CONDUCTORS IN CABLE. ALL CONDUCTORS TO BE NUMBER 14 AWG WIRE UNLESS OTHERWISE NOTED.
- ◉ EMERGENCY VEHICLE LIGHT DETECTOR
- ◉ CONFIRMATION BEACON
- ◻ VEHICLE DETECTOR, INDUCTION LOOP
- ◉ PEDESTRIAN PUSHBUTTON DETECTOR
- ◻ 12" (300MM) PEDESTRIAN SIGNAL SECTION
- ◻ MICROWAVE VEHICLE SENSOR
- ◻ VIDEO CAMERA ASSEMBLY
- ◻ CO-AXIAL VIDEO CABLE

I.D.O.T. TRAFFIC SIGNAL INSTALLATION ELECTRICAL SERVICE REQUIREMENTS

TYPE	NO LAMPS	WATTAGE		%OPERATION	TOTAL WATTAGE
		INCAND.	LED		
SIGNAL (RED)	12	135	117	0.50	102
(YELLOW)	12	135	25	0.25	75
(GREEN)	16	135	18	0.25	68
ARROW	8	135	12	0.10	3.6
PED. SIGNAL	2	90	25	1.00	52
CONTROLLER	1	100	100	1.00	100
ILLUM. SIGN				0.05	
FLASHER				0.50	
ENERGY COSTS TO:				TOTAL =	296.6

ILLINOIS DEPARTMENT OF TRANSPORTATION
201 WEST CENTER COURT
SCHAUMBURG, ILLINOIS 60196-1096

ENERGY SUPPLY CONTACT: KATIE OLIVA
PHONE: (847) 608-2338
COMPANY: COMED

ILLINOIS DEPARTMENT OF TRANSPORTATION

TEMPORARY CABLE PLAN,
ILLINOIS ROUTE 47 AT REED ROAD
PRE-STAGE, STAGE 1, STAGE 1B,
STAGE 2, AND STAGE 2B
(SHEET 2 OF 4)

SCALE: N.I.S.
DATE: APRIL 17, 2009

DRAWN BY: ME/MA/YB
DESIGNED BY: PKG/RRM
CHECKED BY: PKG/RRM

GO GANDHI AND ASSOCIATES, INC.
ENGINEERS AND PLANNERS
9035 W. NORTHWEST HIGHWAY
SUITE 300
CICAGO, ILLINOIS 60628 TEL: (773) 774-5300

REVISIONS

NAME	DATE

PLOT DATE = 4/21/2009 08:25:28
FILE NAME = S:\11\6282\RD_47\TEMP_CD.dgn
PLOT SCALE = 1:1
USER NAME = 3838

...H33_19-ILL47@REED RD_TEMP_CD.dgn
4/21/2009
5:06:15 PM