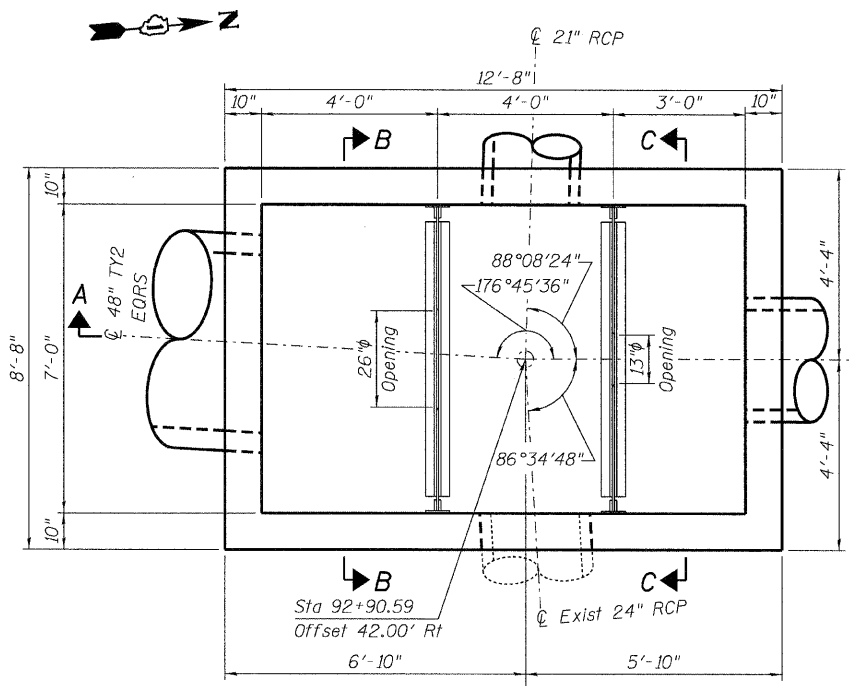


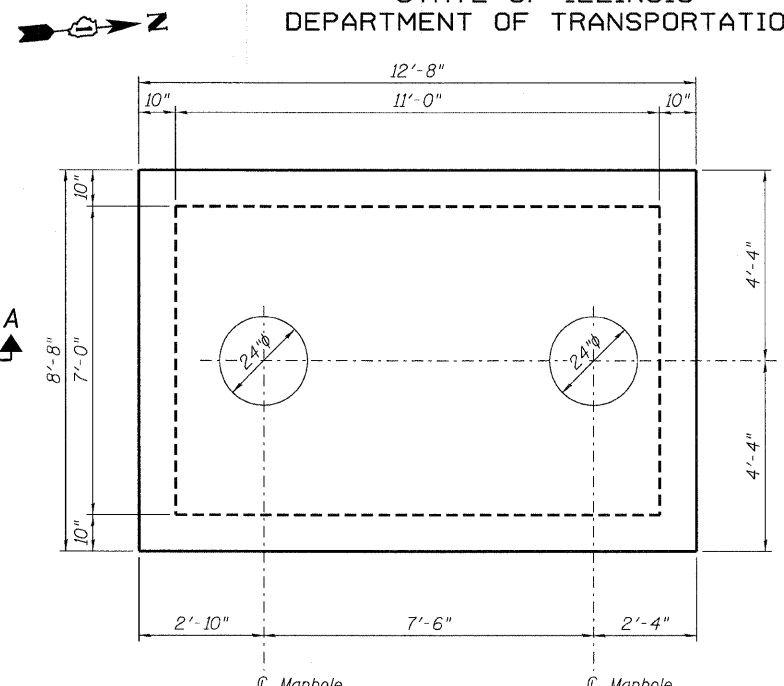
STATE OF ILLINOIS  
DEPARTMENT OF TRANSPORTATION

ROUTE NO.	SECTION	COUNTY	TOTAL SHEETS	SHEET NO.	SHEET NO. 1
FAP 326	★	McHENRY	502	324	6 SHEETS
FED. ROAD DIST. NO. 7	ILLINOIS	FED. AID PROJECT-	326		

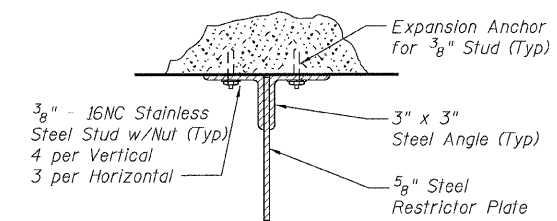
Contract No. 62882  
★ (105X & 106)WRS-2



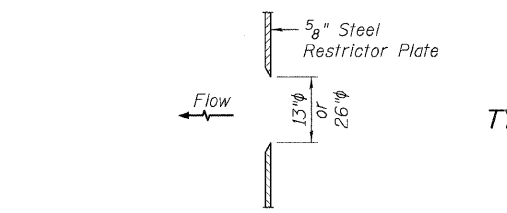
PLAN



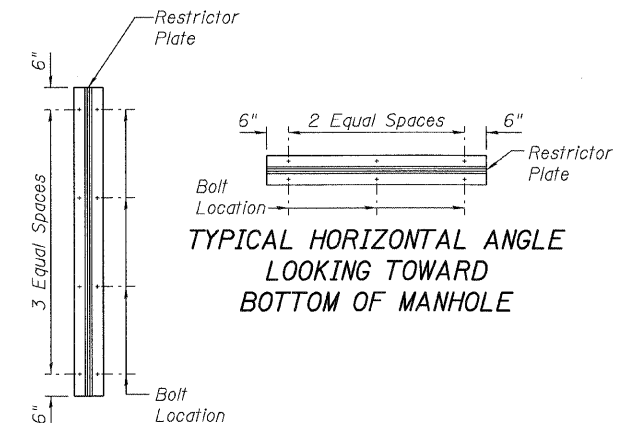
TOP SLAB



ANGLE FASTENER DETAIL



RESTRICTOR PLATE ORIFICE DETAIL  
(Sharp Edge)

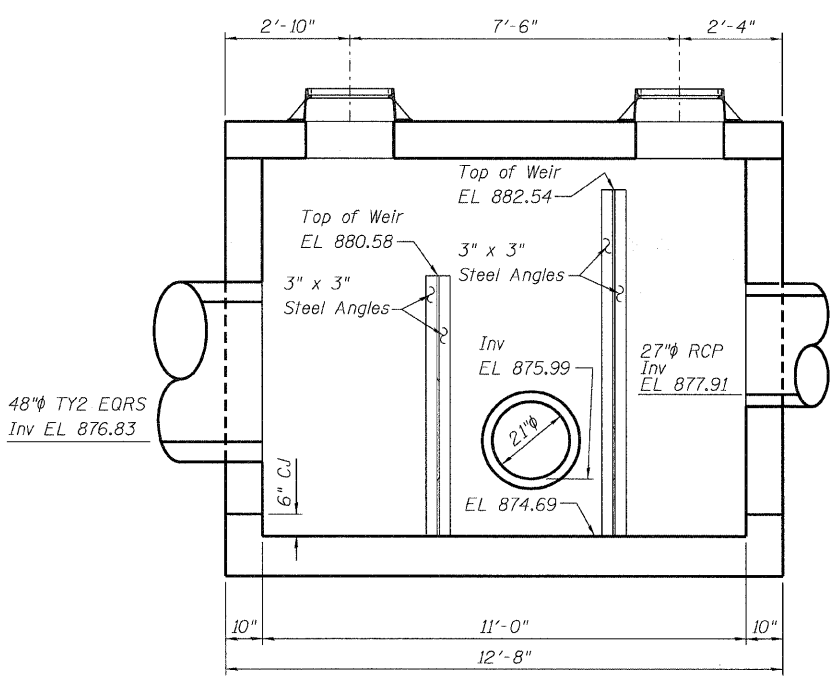


STEEL ANGLE BOLTING DETAILS  
(Total Bolts Required: 22)

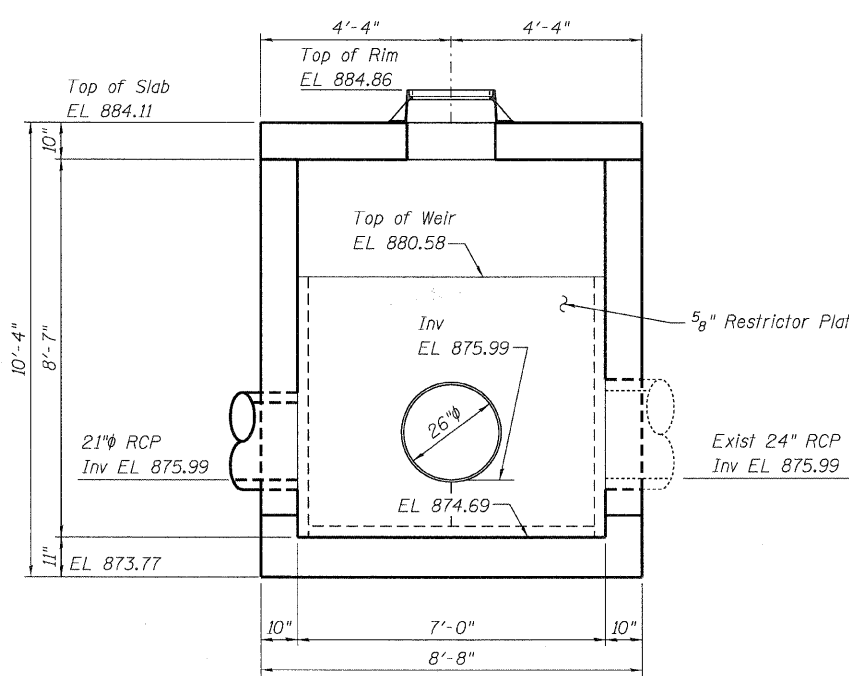
TOTAL BILL OF MATERIAL

ITEM	UNIT	TOTAL
Junction Chamber No. 1	Each	1

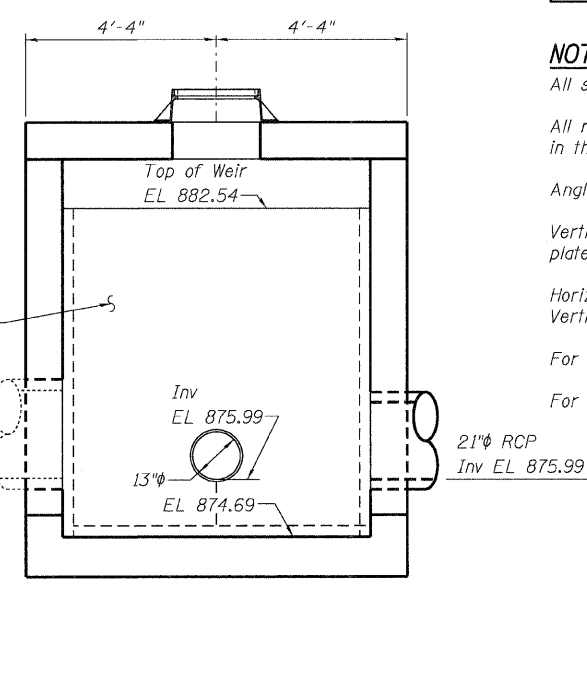
- NOTES:**
- All steel angles and plates to be galvanized after fabrication.
  - All restrictor plates, angles, and hardware to be included in the cost of the manhole.
  - Angles shall be 3" x 3" x 3/8".
  - Vertical angles shall extend from the bottom of the restrictor plate to the top.
  - Horizontal angles shall extend from Vertical angles to Vertical angles.
  - For Junction Chamber location See Drainage Plans.
  - For reinforcement layout and schedule See Sheet 2 of 6.



SECTION A-A



SECTION B-B



SECTION C-C

DESIGNED	BG
CHECKED	DSE
DRAWN	RTT
CHECKED	DSE
DATE	AUG. 5, 2009

ABBREVIATION LIST  
CJ Construction Joint

**Stanley Consultants INC.**  
8501 West Higgins Road, Suite 730, Chicago, Illinois 60631-2801  
www.stanleyconsultants.com  
Illinois Firm Registration No.: 1184-001533

JUNCTION CHAMBER No.1 LAYOUT  
STRUCTURE #261 OUTLET  
PLAN, SECTION & DETAILS  
SOUTH OF NORTH ST.  
F.A.P. 326 - SECT. (105X & 106)WRS-2  
McHENRY COUNTY  
STATION 92+90.59  
OFFSET 42.00' RT