

Bench Mark: BM #8 - Southeast corner of IL Route 47 bridge. Elev 877.46

Existing Structure: S.N. 056-0026 originally built in 1931, widened and reconstructed in 1966. Superstructure is a single span cast-in-place concrete slab. Substructure elements are closed abutments on spread footings. Back to back abutment dimension is 28'-8³/₈" width out to out is 46'-6".

STATE OF ILLINOIS
DEPARTMENT OF TRANSPORTATION

ROUTE NO.	SECTION	COUNTY	SHEET NO.	SHEET NO.
FAP 326	★	McHENRY	502	330
FED. ROAD DIST. NO. 1	ILLINOIS	FED. AID PROJECT	326	

13 SHEETS

Contract No. 62882
★ (105X & 106)WRS-2

LOADING HS20-44

Allow 50#/sq. ft. for future wearing surface.

DESIGN SPECIFICATIONS

2002 AASHTO Standard Specification for Highway Bridges

DESIGN STRESSES

FIELD UNITS

$f'_c = 3,500$ psi
 $f_y = 60,000$ psi (reinforcement)

SCOPE OF WORK

1. Remove Existing Single Span Bridge.
2. Construct New Reinforced Cast-in-Place Triple Cell Concrete Box Culvert

STATION 25+24.62
BUILT 200 BY
STATE OF ILLINOIS
F.A.P. RT. 326 SEC. (105X & 106)WRS-2
LOADING HS20
STRUCTURE NO. 056-0085

NAME PLATE

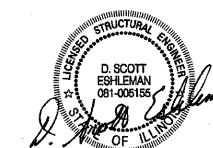
See Std. 515001

LEGEND

- Temporary Soil Retention System (TSRS)
- * Local cross slope around culvert ends
- ** Varies from 0'-0" at Sta 26+14.68 to 16'-0" at Sta 23+92.91
- *** At downstream End of Culvert
- † Dimensions taken from Tangent at Sta 25+24.62 and \varnothing Culvert Intersection
- †† Varies from 22'-0" at Sta 26+14.68 to 6'-0" at Sta 23+92.91
- SB-01 Soil Boring Location

APPROVED
FOR STRUCTURAL ADEQUACY ONLY

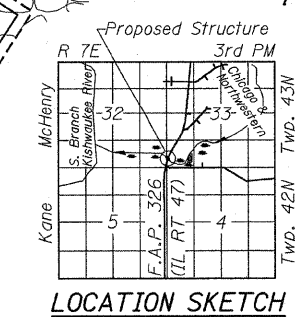
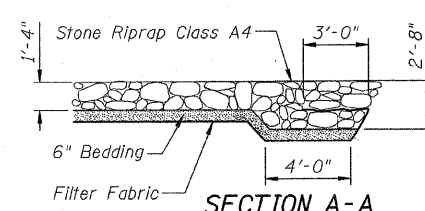
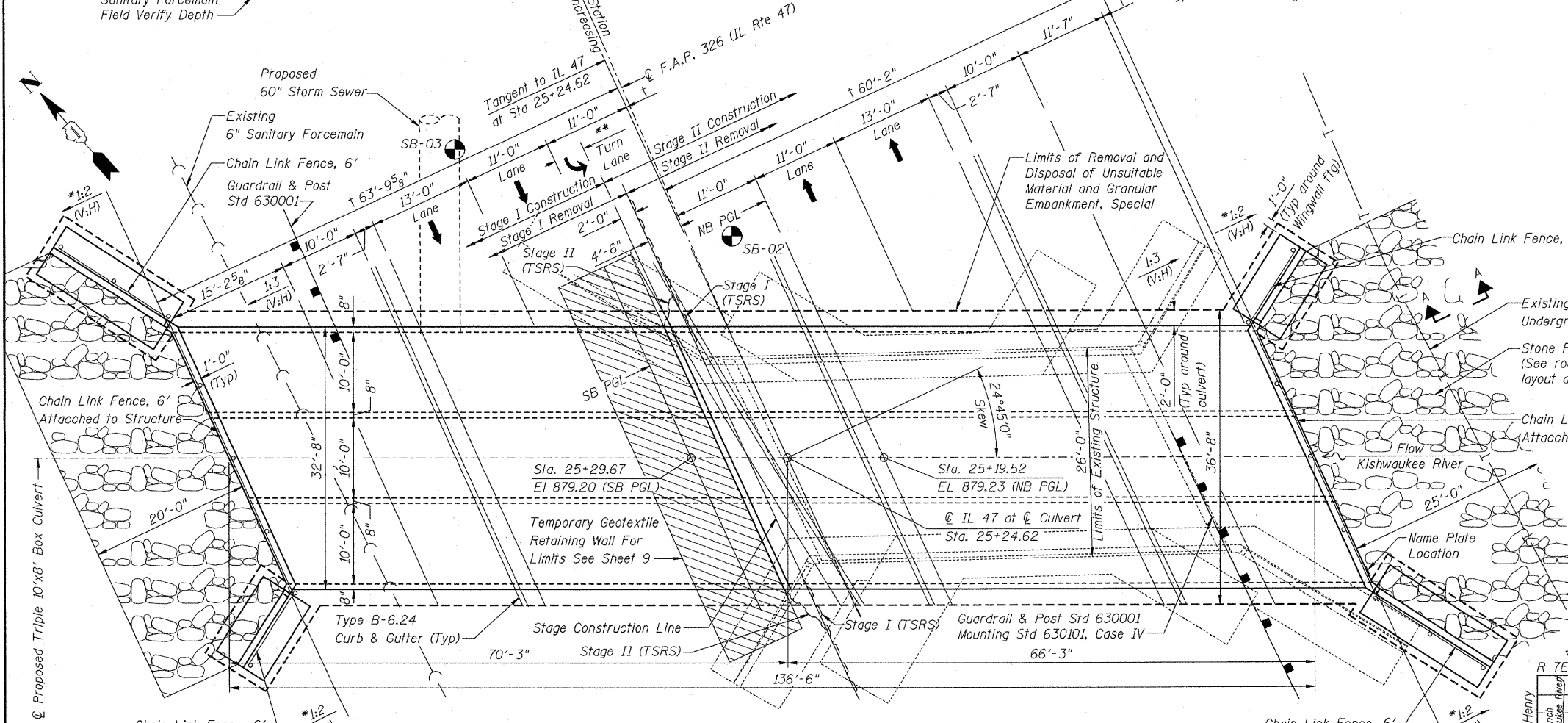
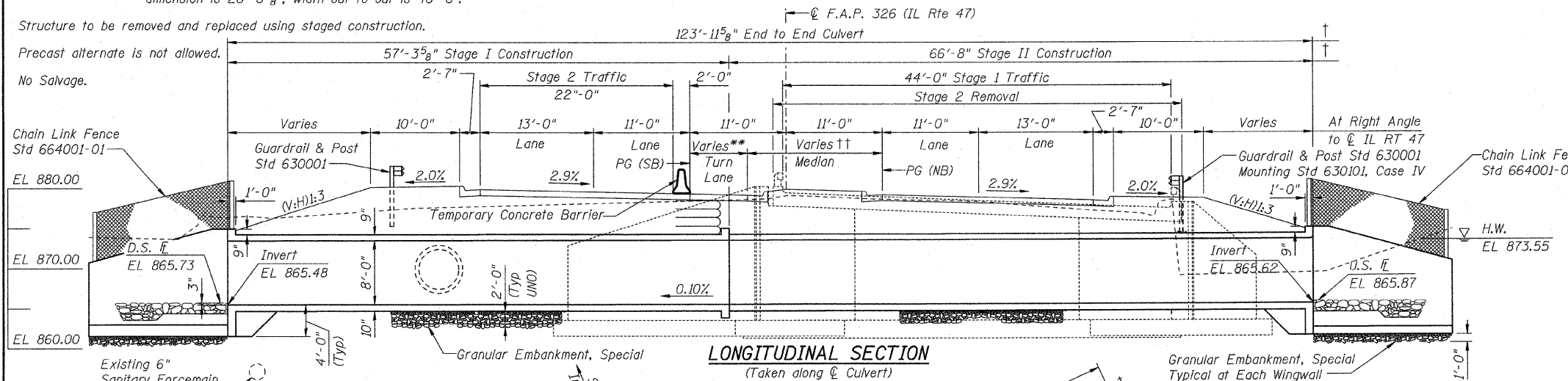
Ralph E. Anderson
ENGINEER OF BRIDGES AND STRUCTURES



Expiration Date: 11-30-2010
Date: 8/5/09

Stanley Consultants INC.
8501 West Higgins Road, Suite 730, Chicago, Illinois 60631-2801
www.stanleyconsultants.com
Illinois Firm Registration No.: 1184-001533

GENERAL PLAN
IL ROUTE 47 OVER
S. BRANCH KISHWAUKEE RIVER
F.A.P. 326 - SECT. (105X & 106)WRS-2
McHENRY COUNTY
STATION 25+24.62
STRUCTURE NO. 056-0085



DESIGNED	- NDR
CHECKED	- DSE
DRAWN	- RTT
CHECKED	- DSE
DATE	- Aug 5, 2009