

STATE OF ILLINOIS
DEPARTMENT OF TRANSPORTATION

ROUTE NO.	SECTION	COUNTY	TOTAL SHEETS	SHEET NO.
FAP 326	★	McHENRY	502	341
FED. ROAD DIST. NO. 1		ILLINOIS	FED. AID PROJECT	326

Contract No. 62882
★ (105X & 106)WRS-2

Wang Engineering, Inc.
Consulting Geotechnical and Environmental Engineers
wangeng@wangeng.com
1145 Main Street
Lombard, IL 60148
Telephone: 630 953-9928
Fax: 630 953-9938

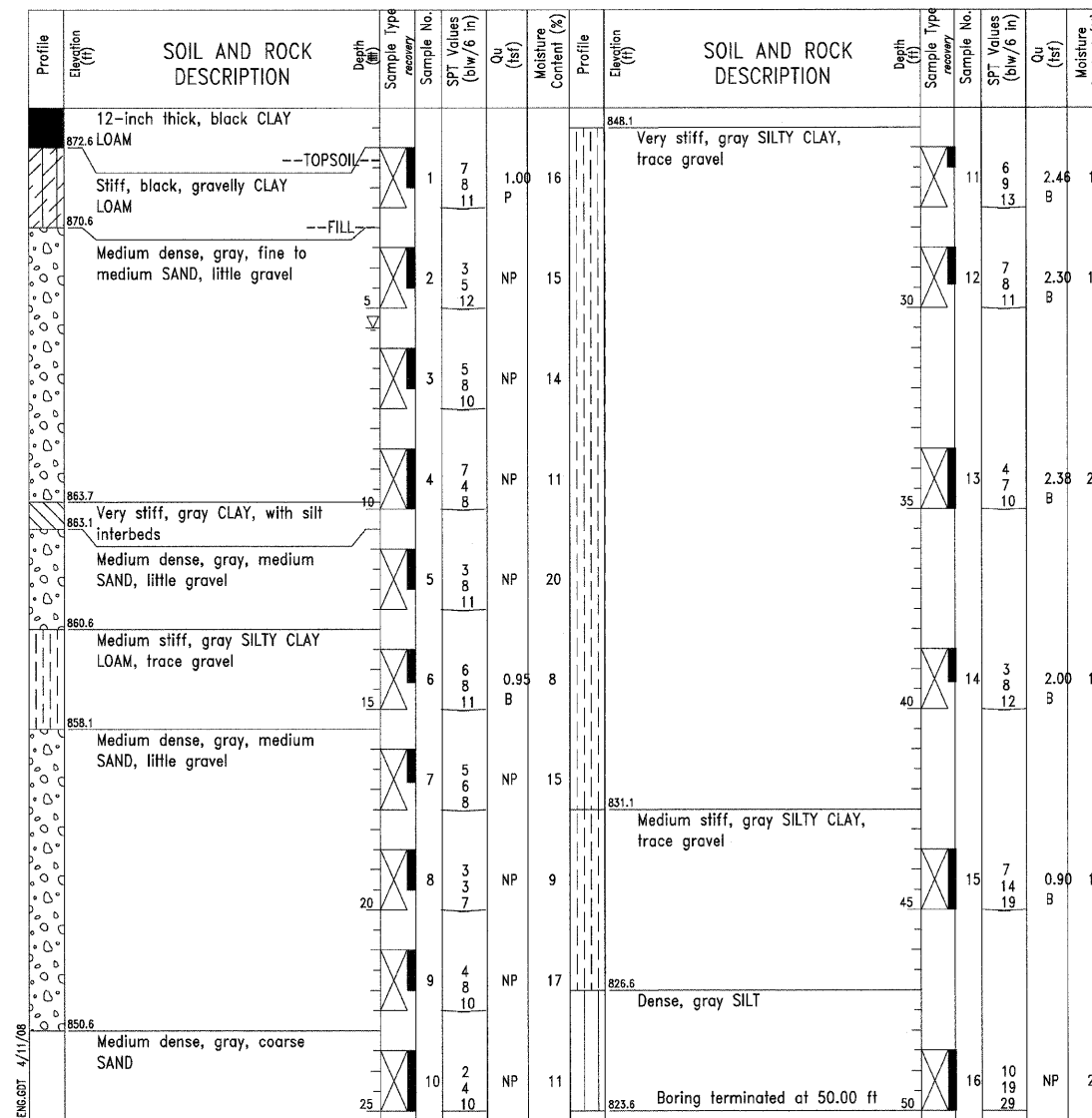
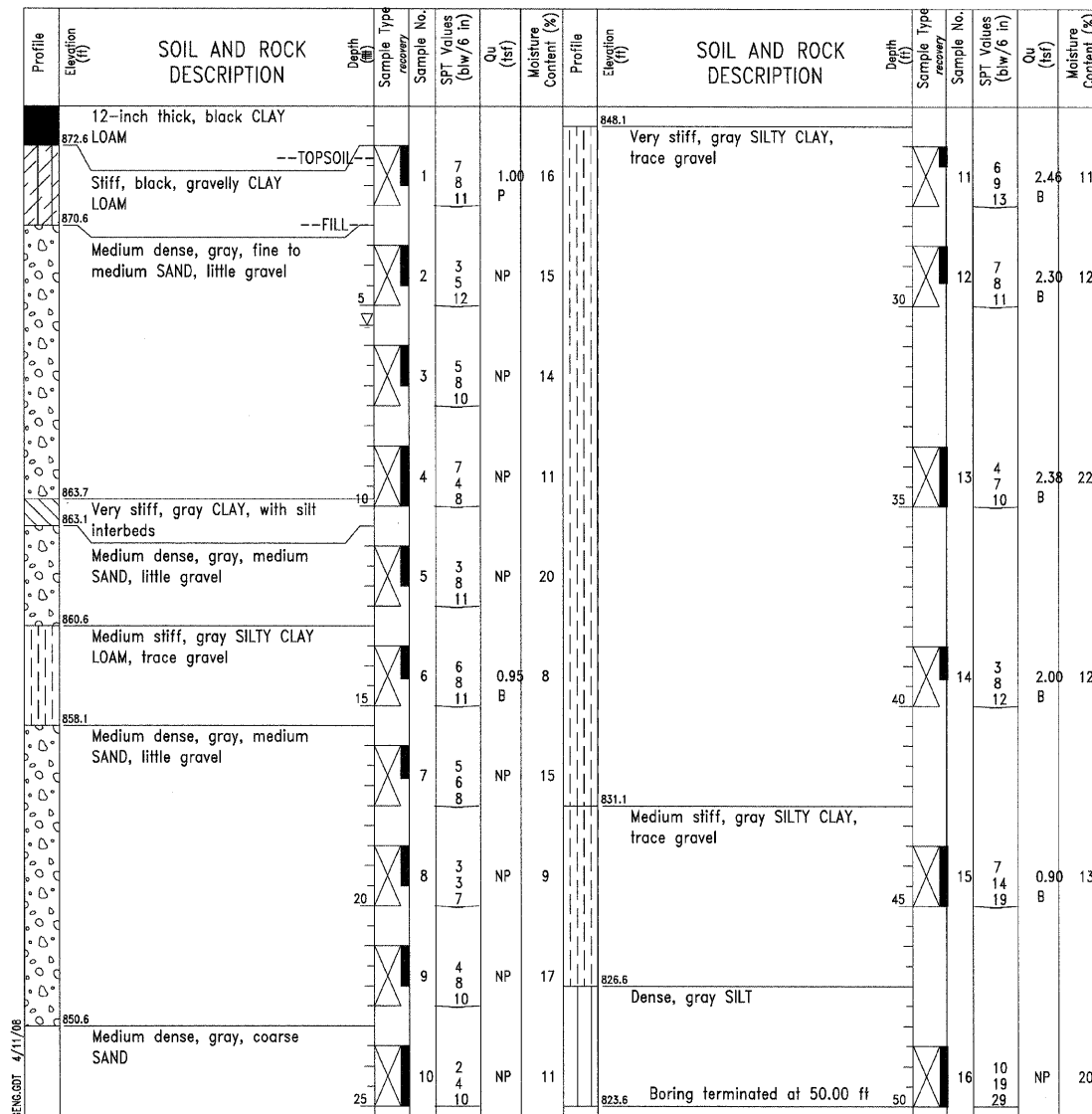
BORING LOG SB-01
WEI Job No.: 630-02-01
Datum: NAVD 88
Elevation: 873.57 ft
North: 1998989.65 ft
East: 957495.51 ft
Station: 24+35.69
Offset: 57.48 RT

Client: Stanley Consultants, Inc.
Project: IL Route 47 from Reed Road to Kreuzer Road
Location: McHenry County, IL

Wang Engineering, Inc.
Consulting Geotechnical and Environmental Engineers
wangeng@wangeng.com
1145 Main Street
Lombard, IL 60148
Telephone: 630 953-9928
Fax: 630 953-9938

BORING LOG SB-01
WEI Job No.: 630-02-01
Datum: NAVD 88
Elevation: 873.57 ft
North: 1998989.65 ft
East: 957495.51 ft
Station: 24+35.69
Offset: 57.48 RT

Client: Stanley Consultants, Inc.
Project: IL Route 47 from Reed Road to Kreuzer Road
Location: McHenry County, IL



GENERAL NOTES

Begin Drilling 09-04-2007 Complete Drilling 09-04-2007
 Drilling Contractor Precon Drilling Drill Rig CME-75 ATV
 Driller Kevin & Shaune Logger Y. Shiu Checked by N. Davis
 Drilling Method 3.25-inch IDA HSA; backfilled with bentonite upon completion

WATER LEVEL DATA

While Drilling 5.50 ft
 At Completion of Drilling DRY
 Time After Drilling NA
 Depth to Water NA

The stratification lines represent the approximate boundary between soil types; the actual transition may be gradual.

GENERAL NOTES

Begin Drilling 09-04-2007 Complete Drilling 09-04-2007
 Drilling Contractor Precon Drilling Drill Rig CME-75 ATV
 Driller Kevin & Shaune Logger Y. Shiu Checked by N. Davis
 Drilling Method 3.25-inch IDA HSA; backfilled with bentonite upon completion

WATER LEVEL DATA

While Drilling 5.50 ft
 At Completion of Drilling DRY
 Time After Drilling NA
 Depth to Water NA

The stratification lines represent the approximate boundary between soil types; the actual transition may be gradual.

DESIGNED -
CHECKED - DSE
DRAWN - RTT
CHECKED - DSE
DATE - Aug. 5, 2009



SOIL BORING LOGS SB-1 AND SB-2
IL ROUTE 47 OVER
S. BRANCH KISHWAUKEE RIVER
F.A.P. 326 - SECT. (105X & 106)WRS-2
McHENRY COUNTY
STATION 25+24.62
STRUCTURE NO. 056-0085