

STATE OF ILLINOIS
DEPARTMENT OF TRANSPORTATION

| | | | | | |
|-----------------------|----------|-------------------|--------------|-----------|--------------|
| ROUTE NO. | SECTION | COUNTY | TOTAL SHEETS | SHEET NO. | SHEET NO. 13 |
| FAP 326 | ★ | McHENRY | 502 | 342 | 13 SHEETS |
| FED. ROAD DIST. NO. 1 | ILLINOIS | FED. AID PROJECT- | 326 | | |

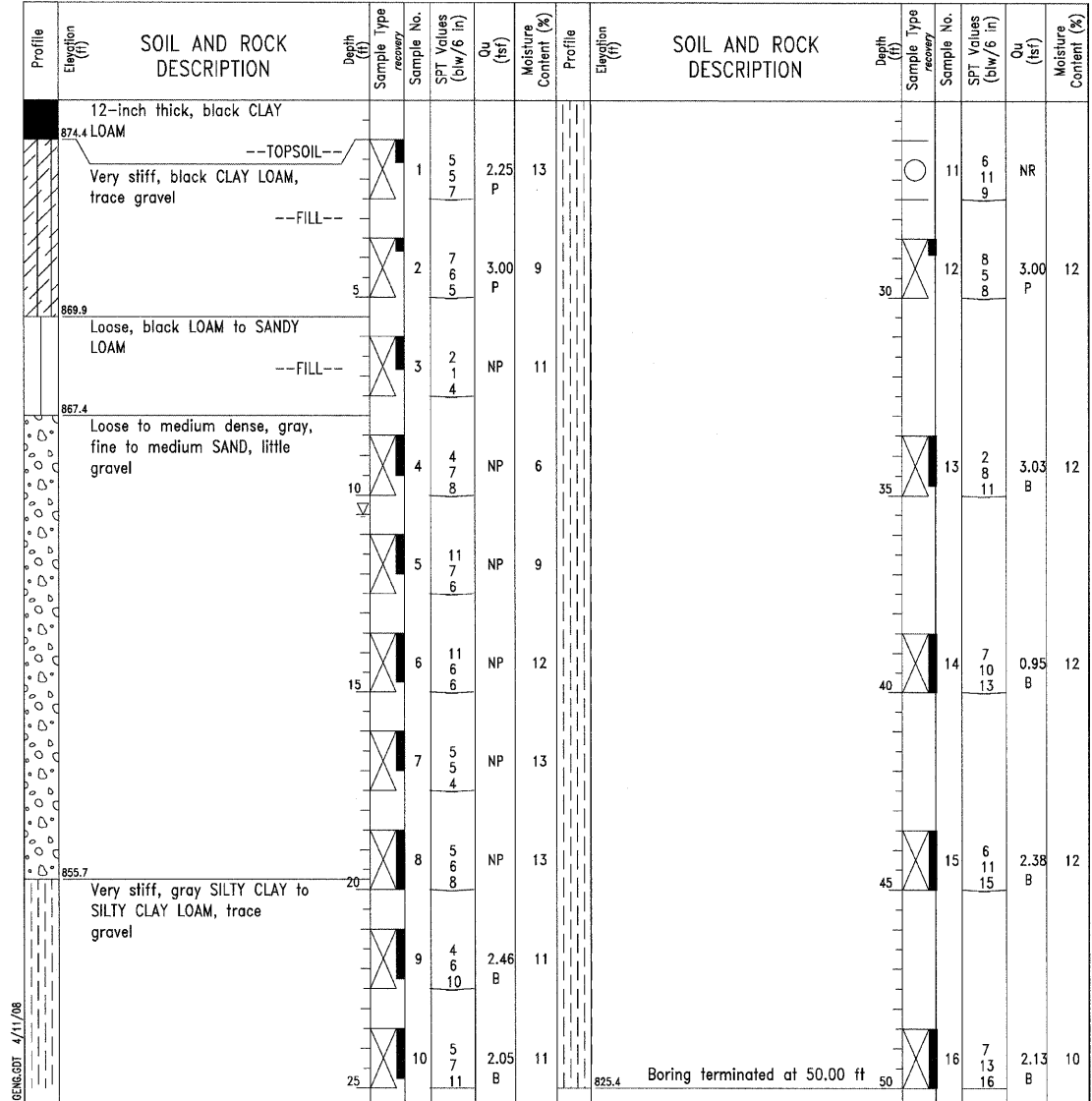
Contract No. 62882
★ (105X & 106)WRS-2

W Wang Engineering, Inc.
Consulting Geotechnical and
Environmental Engineers
wangeng@wangeng.com
1145 Main Street
Lombard, IL 60148
Telephone: 630 953-9928
Fax: 630 953-9938

BORING LOG SB-03

WEI Job No.: 630-02-01
Client Stanley Consultants, Inc.
Project IL Route 47 from Reed Road to Kreuzer Road
Location McHenry County, IL

Datum: NAVD 88
Elevation: 875.43 ft
North: 1999147.44 ft
East: 957468.66 ft
Station: 25+76.61
Offset: 22.34 LT



| GENERAL NOTES | | WATER LEVEL DATA | |
|---------------------|--|-------------------|------------|
| Begin Drilling | 09-04-2007 | Complete Drilling | 09-04-2007 |
| Drilling Contractor | Precon Drilling | Drill Rig | CME-75 ATV |
| Driller | Kevin & Shaune | Logger | Y. Shiu |
| Checked by | N. Davis | | |
| Drilling Method | 3.25-inch IDA HSA; backfilled with bentonite upon completion | | |
| | While Drilling | 10.50 ft | |
| | At Completion of Drilling | DRY | |
| | Time After Drilling | NA | |
| | Depth to Water | NA | |

| | |
|----------|----------------|
| DESIGNED | - |
| CHECKED | - DSE |
| DRAWN | - RTT |
| CHECKED | - DSE |
| DATE | - Aug. 5, 2009 |



SOIL BORING LOG SB-3
IL ROUTE 47 OVER
S. BRANCH KISHWAUKEE RIVER
F.A.P. 326 - SECT. (105X & 106)WRS-2
McHENRY COUNTY
STATION 25+24.62
STRUCTURE NO. 056-0085