

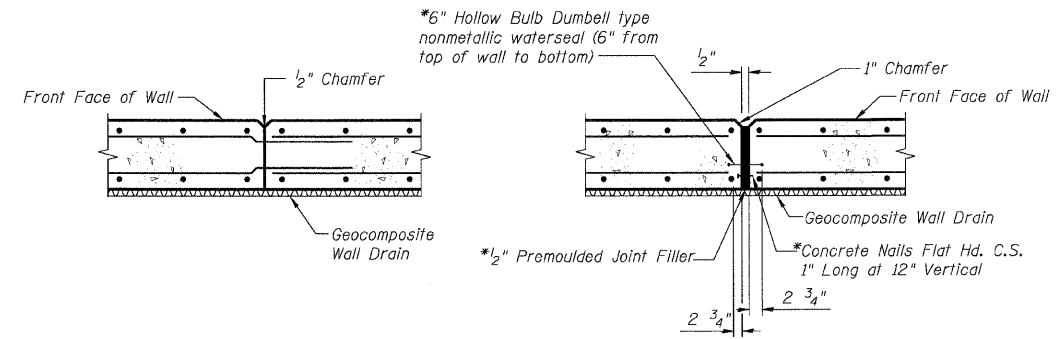
STATE OF ILLINOIS
DEPARTMENT OF TRANSPORTATION

ROUTE NO.	SECTION	COUNTY	TOTAL SHEETS	SHEET NO.	SHEET NO. 4 5 SHEETS
47	★	MCHEMRY	502	346	
FED. ROAD DIST. NO. 1	ILLINOIS	FED. AID PROJECT			

Contract No. 62882
★(105X & 106) WRS-2

BILL OF MATERIAL

Bar	No.	Size	Length (ft)	Shape
$h_{60}(E)$	36	#4	29'-8"	—
$h_{61}(E)$	72	#4	31'-8"	—
$h_{62}(E)$	12	#4	24'-8"	—
$n_{60}(E)$	610	#4	4'-10"	L
$t_{60}(E)$	604	#4	3'-8"	—
$v_{60}(E)$	610	#4	4'-0"	—
$w_{60}(E)$	90	#4	31'-10"	—
$w_{61}(E)$	10	#4	24'-8"	—
$w_{62}(E)$	15	#4	3'-4"	┌
$w_{63}(E)$	15	#4	5'-2"	└
Structure Excavation		Cu Yd	425	
Concrete Structures		Cu Yd	120	
Reinforcement Bars, Epoxy Coated		Pound	9,680	

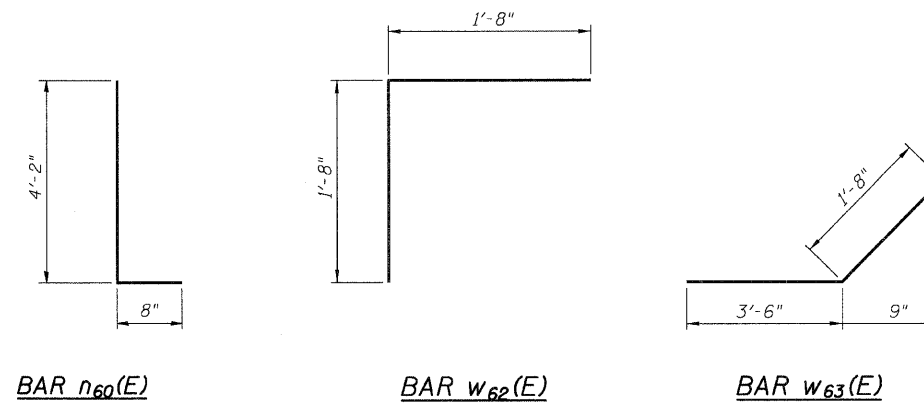


CONSTRUCTION JOINT DETAIL

EXPANSION JOINT DETAIL

RETAINING WALL JOINT DETAILS

(Stem of Wall Only, Not In Footing) * Cost Included With Concrete Structures



DESIGNED	DSE
CHECKED	BG
DRAWN	TWK
CHECKED	BG
DATE:	Aug. 5, 2009

Stanley Consultants INC.
8501 West Higgins Road, Suite 730, Chicago, Illinois 60631-2801
www.stanleyconsultants.com
Illinois Firm Registration No.: 1184-001533

WALL DETAILS & BAR SCHEDULE
IL ROUTE 47
DIECKE PARK RETAINING WALL
F.A.P. 326-SECT.(105X & 106) WRS-2
MCHEMRY COUNTY
STATION 57+27.50