

STATE OF ILLINOIS  
DEPARTMENT OF TRANSPORTATION

ROUTE NO.	SECTION	COUNTY	TOTAL SHEETS	SHEET NO.	SHEET NO. 2
FAP 326	★	McHENRY	502	349	5 SHEETS
FED. ROAD DIST. NO. 1	ILLINOIS	FED. AID PROJECT-			

Contract No. 62882  
★(105X & 106) WRS-2

**INDEX OF DRAWINGS**

Sheet No.	Title
1 of 5	General Plan & Elevation
2 of 5	General Notes & Total Bill of Material
3 of 5	Wall Plan and Elevation
4 of 5	Wall Plan and Elevation
5 of 5	Wall Details and Bar Schedule

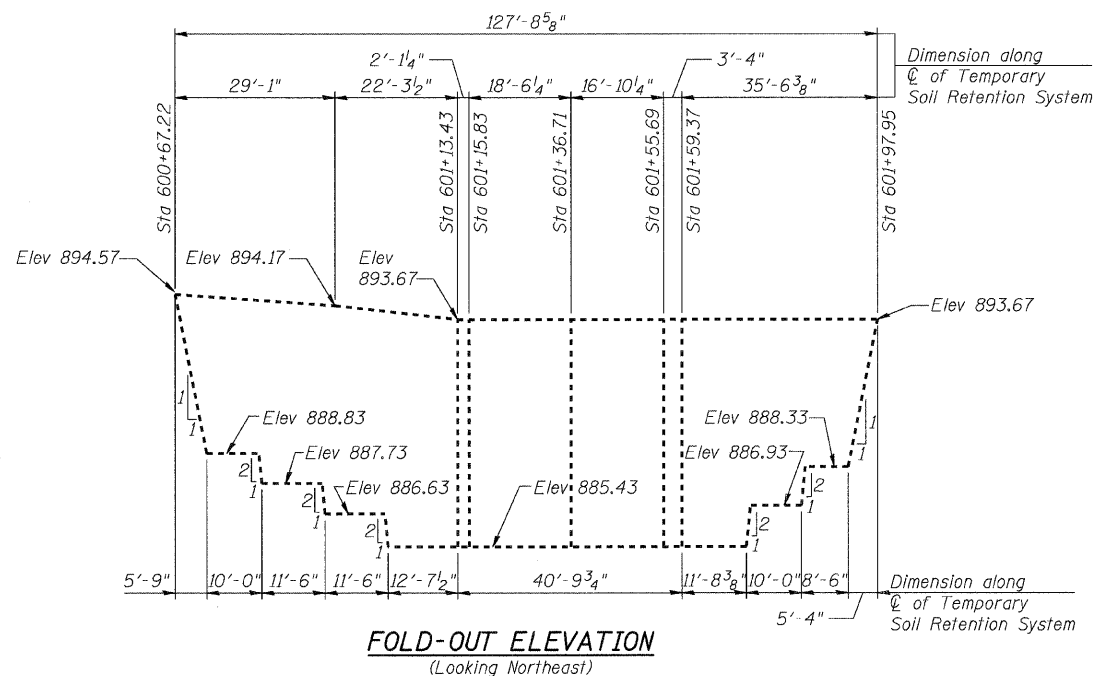
**GENERAL NOTES**

- Reinforcement bars shall conform to the requirements of ASTM A 706 Gr 60 (IL Modified). See Special Provisions.
- Cover from face of concrete to face of reinforcement bars shall be 3" for surfaces formed against earth and 2" for all other surfaces unless otherwise shown.
- Reinforcing bar bending dimensions are out to out.
- Reinforcement bars designated (E) shall be epoxy coated.
- Reinforcement bar splices shall be in accordance with the following table unless shown otherwise on the drawing.

Minimum Lap

Size	Lap
#4	1'-8"

- No construction joints except those shown on the plans will be allowed unless ordered by the engineer.
- An application of Protective Coat shall be applied to the top surface and front face of the wall as shown on the Typical Section.



**TOTAL BILL OF MATERIAL**

ITEM	UNIT	TOTAL
Porous Granular Embankment (Special)	Cu Yd	21
Structure Excavation	Cu Yd	220
Concrete Structures	Cu Yd	70
Protective Coat	Sq Yd	53
Reinforcement Bars, Epoxy Coated	Pound	5,430
Temporary Soil Retention System	Sq Ft	901

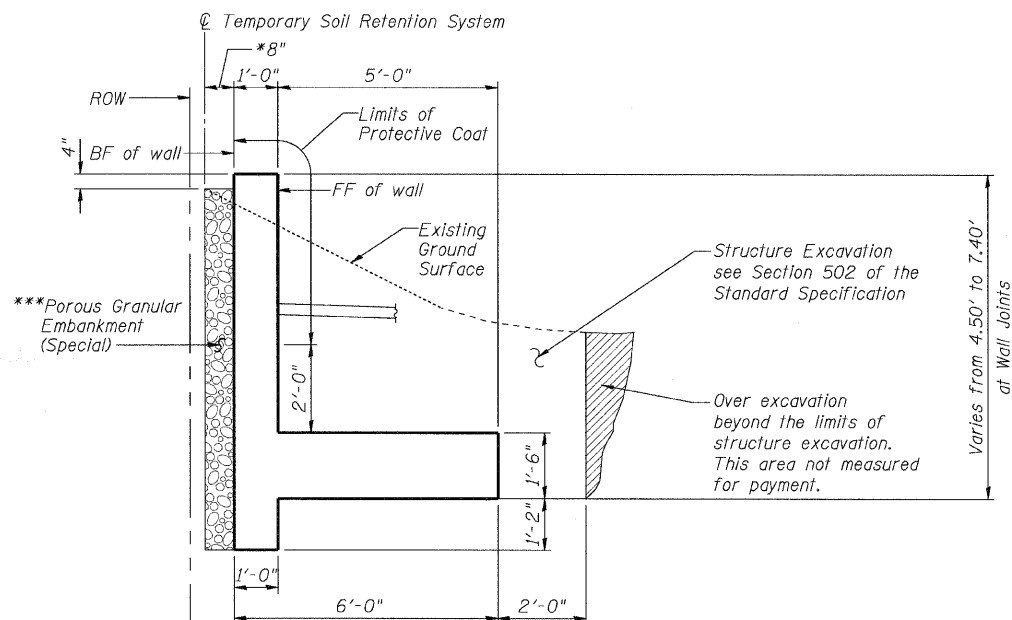
**ELEVATION CHART**

***Length along Front Face of Wall from North End (ft)	Kink Point Station at Front Face of Wall	Top of Wall Elevation at Front Face of Wall	Height of Wall (ft)
0.00	600+71.13	894.90	4.90
23.00		894.50	6.70
45.82	601+12.34	894.00	7.40
67.57	601+36.60	894.00	7.40
89.13	601+60.59	894.00	7.40
119.04	601+92.30	894.00	4.50

\*\*\*Measured along front face of retaining wall.

**LEGEND:**

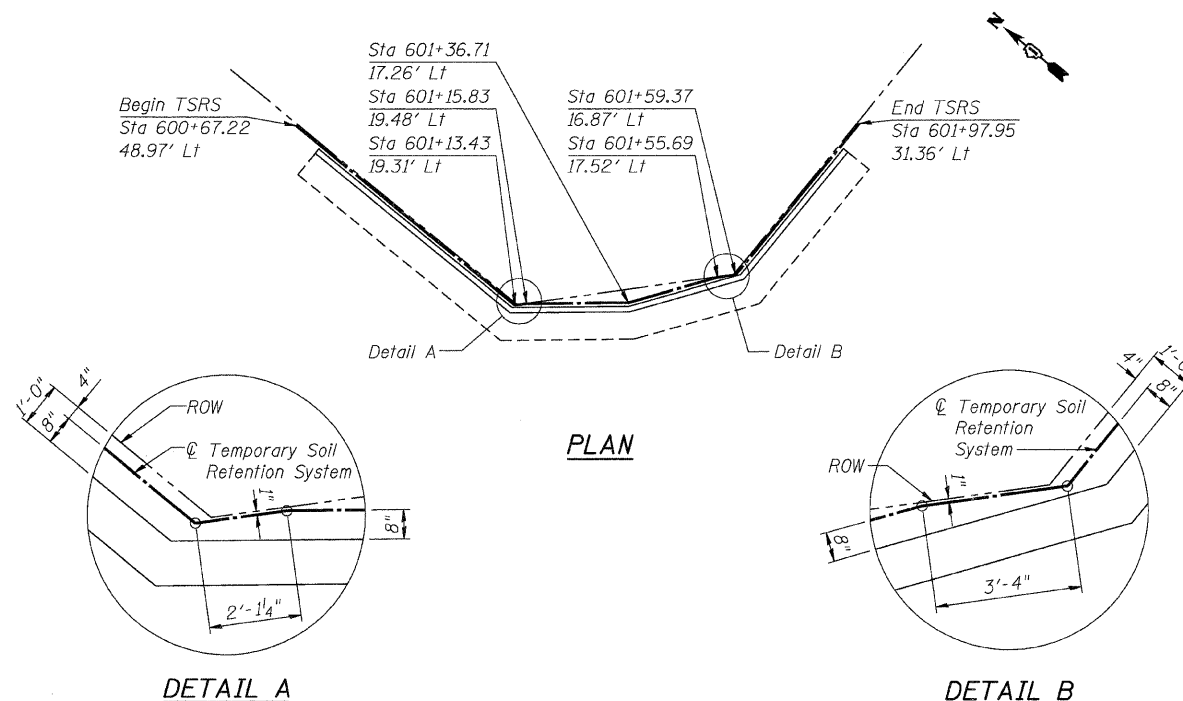
ROW = Right of Way  
TSRS = Temporary Soil Retention System  
FF = Front Face of Wall  
BF = Back Face of Wall



**TYPICAL SECTION**

\*B" except as shown near wall kink points in Details A & B

\*\*\*Porous Granular Embankment (Special) extends full length of retaining wall



**TEMPORARY SOIL RETENTION SYSTEM**

DESIGNED	DSE
CHECKED	BG
DRAWN	TWK
CHECKED	BG
DATE:	Aug. 5, 2009



**GENERAL NOTES & TOTAL BILL OF MATERIAL**

**IL ROUTE 47**  
**CORAL STREET RETAINING WALL**  
**F.A.P. 326-SECT.(105X & 106) WRS-2**  
**McHENRY COUNTY**  
**STATION 601+36.60**