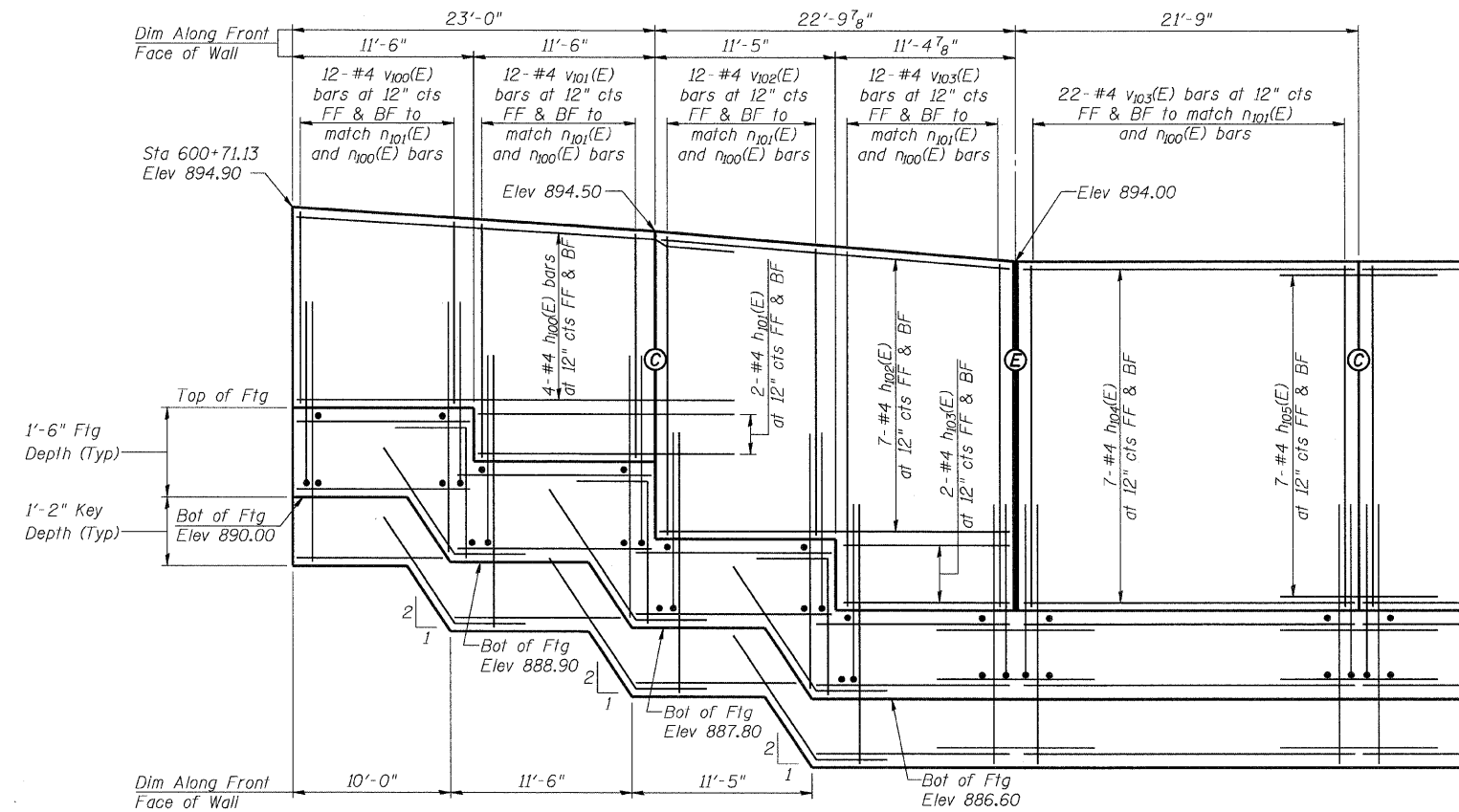


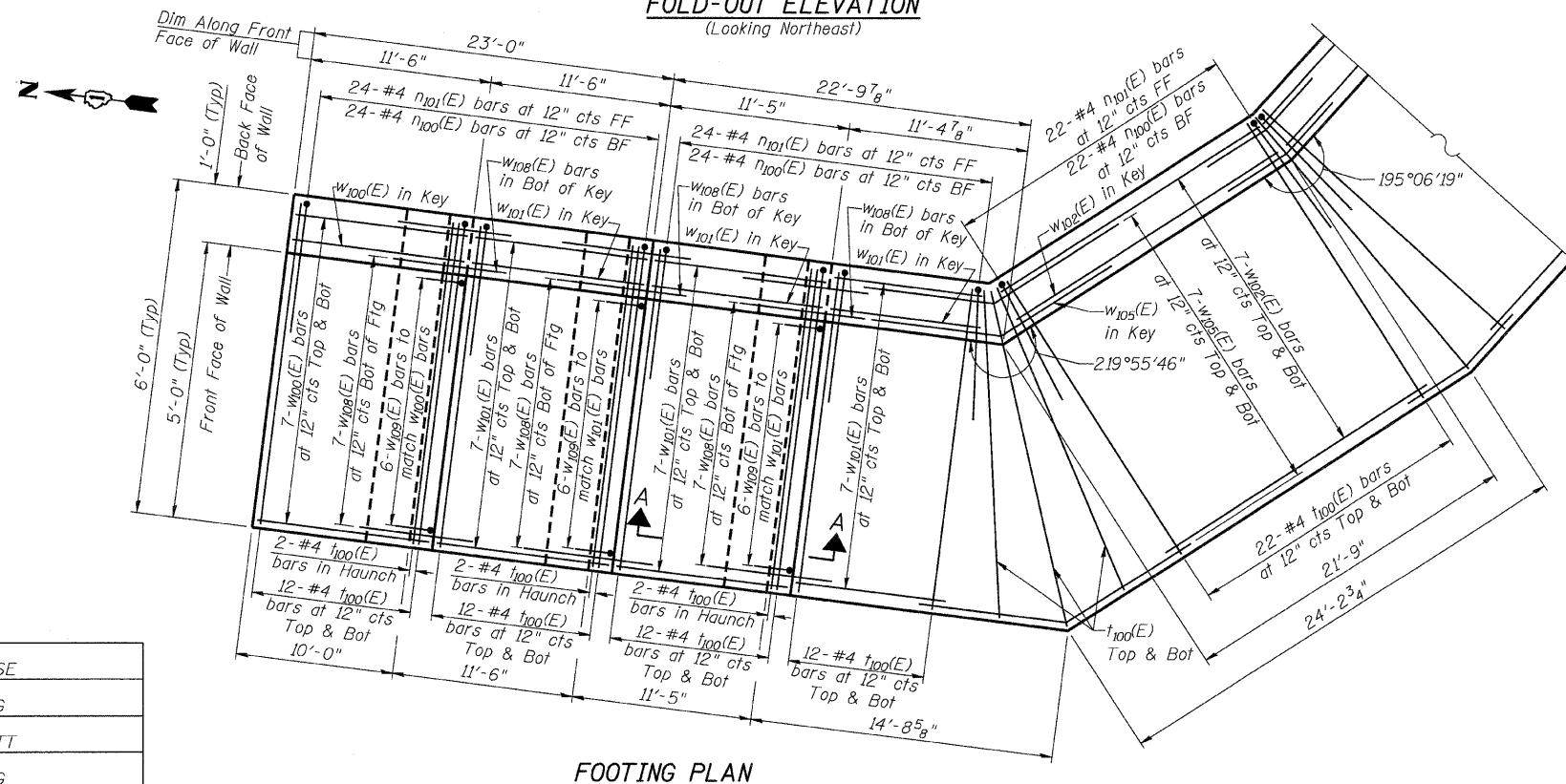
STATE OF ILLINOIS
DEPARTMENT OF TRANSPORTATION

ROUTE NO.	SECTION	COUNTY	TOTAL SHEETS	SHEET NO.
FAP 326	★	McHENRY	502	350
5 SHEETS				

Contract No. 62882
★(105X & 106) WRS-2



FOLD-OUT ELEVATION
(Looking Northeast)



FOOTING PLAN

DESIGNED	DSE
CHECKED	BG
DRAWN	RTT
CHECKED	BG
DATE:	Aug. 5, 2009

ABBREVIATION LIST

Bot	Bottom
BF	Back Face
cts	Centers
EF	Each Face
FF	Front Face
Ftg	Footing
Jt	Joint
Typ	Typical

MIN BAR LAP

#4 bars = 1'-8"

NOTES:

For Bill of Material See Sheet 5 of 5.

- (E) Expansion Joint in wall stem.
(See Sheet 5 of 5 for Detail)
- (C) Construction Joint in wall stem or footing.
(See Sheet 5 of 5 for Detail)



WALL PLAN & ELEVATION
IL ROUTE 47
CORAL STREET RETAINING WALL
F.A.P. 326-SECT.(105X & 106) WRS-2
McHENRY COUNTY
STATION 601+36.60