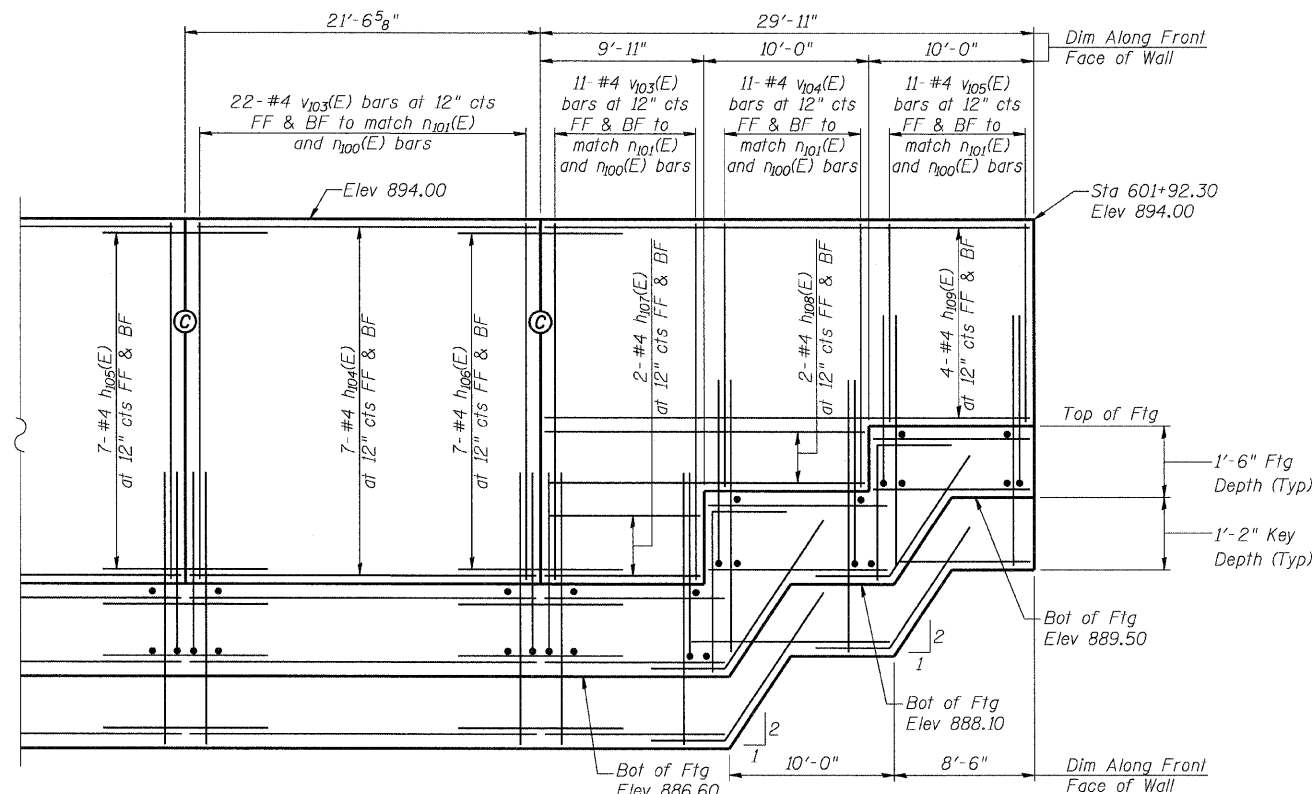


STATE OF ILLINOIS  
DEPARTMENT OF TRANSPORTATION

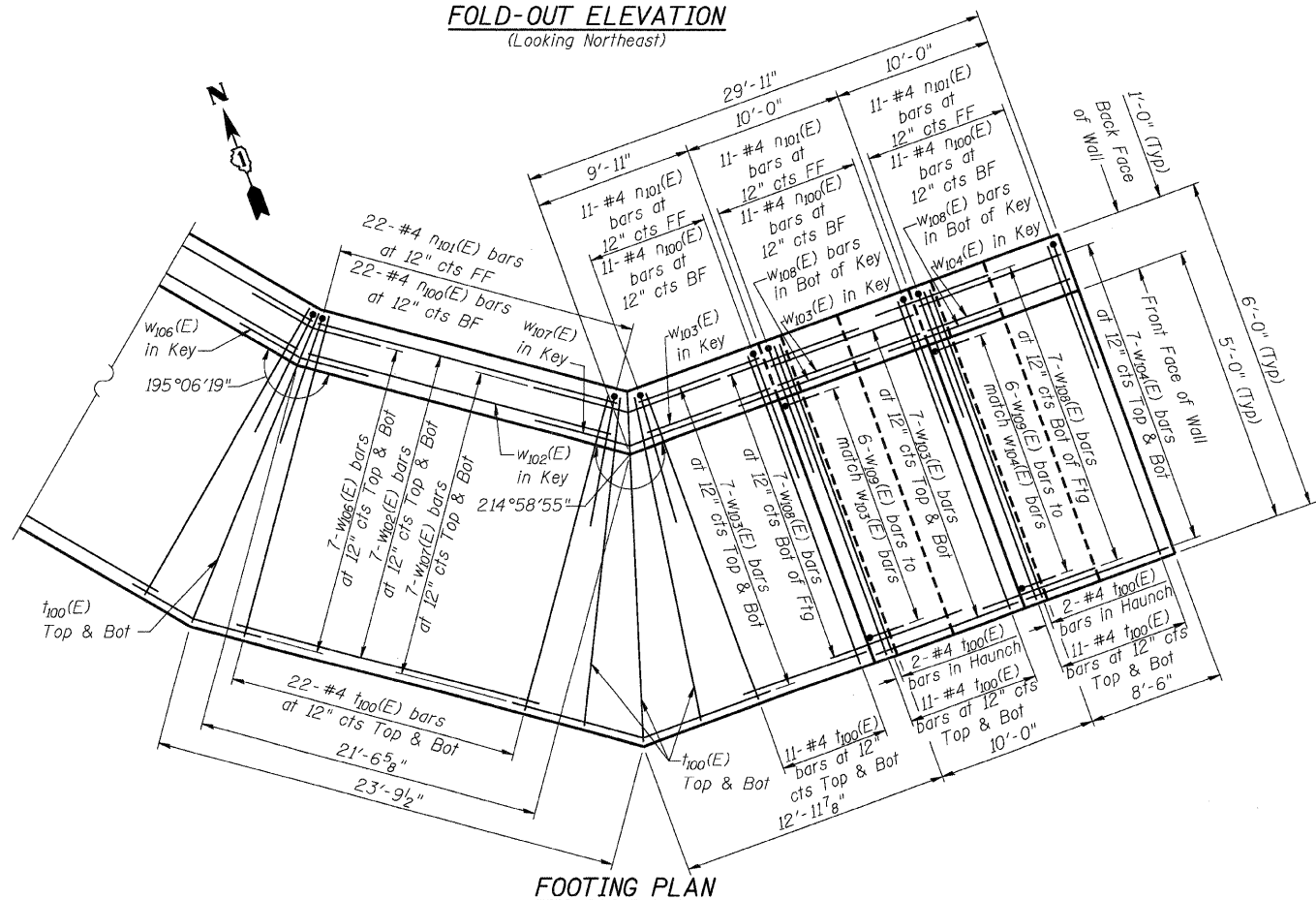
ROUTE NO.	SECTION	COUNTY	TOTAL SHEETS	SHEET NO.
FAP 326	★	McHENRY	502	351
FED. ROAD DIST. NO. 1	ILLINOIS	FED. AID PROJECT		

Contract No. 62882  
★(105X & 106) WRS-2

SHEET NO. 4  
5 SHEETS



**FOLD-OUT ELEVATION**  
(Looking Northeast)



**FOOTING PLAN**

**ABBREVIATION LIST**

Bot	Bottom
BF	Back Face
cts	Centers
EF	Each Face
FF	Front Face
Ftg	Footing
Jt	Joint
Typ	Typical

**MIN BAR LAP**

#4 bars = 1'-8"

**NOTES:**

For Bill of Material See Sheet 5 of 5.

- (E) Expansion Joint in wall stem.  
(See Sheet 5 of 5 For Detail)
- (C) Construction Joint in wall stem or footing.  
(See Sheet 5 of 5 For Detail)



**WALL PLAN & ELEVATION**  
**IL ROUTE 47**  
**CORAL STREET RETAINING WALL**  
**F.A.P. 326-SECT.(105X & 106) WRS-2**  
**McHENRY COUNTY**  
**STATION 601+36.60**

DESIGNED	DSE
CHECKED	BG
DRAWN	RTT
CHECKED	BG
DATE:	Aug. 5, 2009