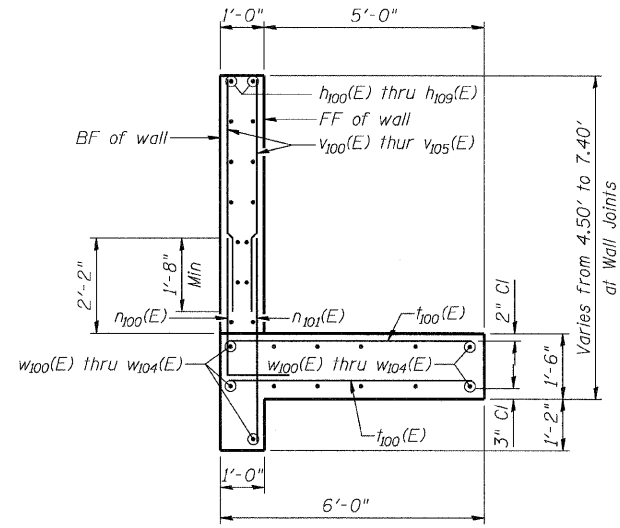


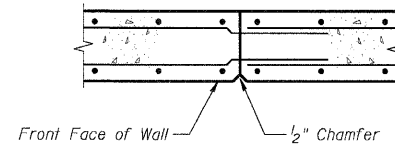
STATE OF ILLINOIS  
DEPARTMENT OF TRANSPORTATION

ROUTE NO.	SECTION	COUNTY	TOTAL SHEETS	SHEET NO.	SHEET NO. 5 5 SHEETS
FAP 326	★	McHENRY	502	352	
FED. ROAD DIST. NO. 1	ILLINOIS	FED. AID PROJECT			

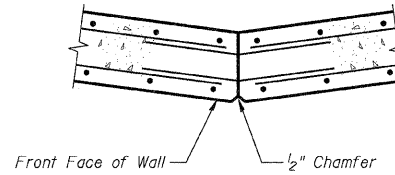
Contract No. 62882  
★(105X & 106) WRS-2



TYPICAL SECTION

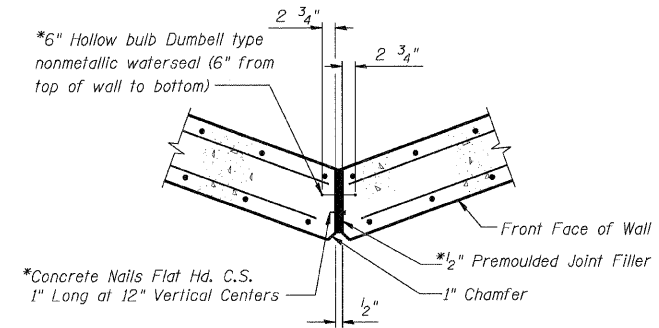


CONSTRUCTION JOINT DETAIL  
(Stem of Wall Only, Not In Footing)



CONSTRUCTION JOINT DETAIL  
(Stem of Wall Only, Not In Footing)

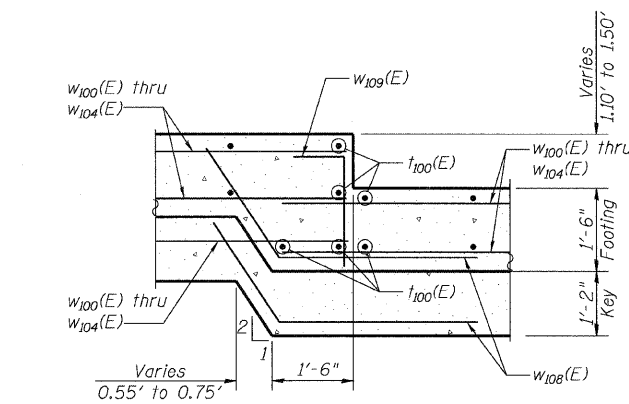
RETAINING WALL JOINT DETAILS



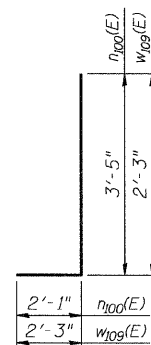
EXPANSION JOINT DETAIL  
(Stem of Wall Only, Not In Footing)  
\* Cost Included With Concrete Structures

BILL OF MATERIAL

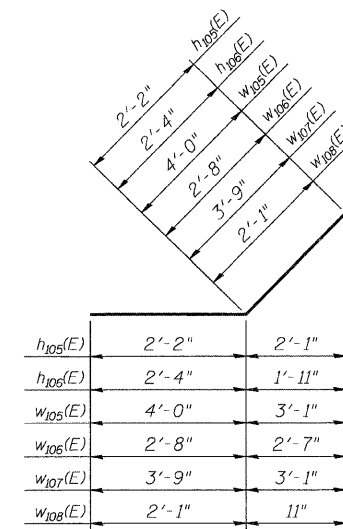
Bar	No.	Size	Length (ft)	Shape
$h_{100}(E)$	8	#4	24'-11"	
$h_{101}(E)$	4	#4	13'-5"	
$h_{102}(E)$	14	#4	22'-6"	
$h_{103}(E)$	4	#4	11'-0"	
$h_{104}(E)$	28	#4	20'-11"	
$h_{105}(E)$	14	#4	4'-4"	
$h_{106}(E)$	14	#4	4'-8"	
$h_{107}(E)$	4	#4	9'-5"	
$h_{108}(E)$	4	#4	19'-5"	
$h_{109}(E)$	8	#4	29'-5"	
$w_{100}(E)$	125	#4	5'-6"	
$w_{101}(E)$	125	#4	4'-8"	
$t_{100}(E)$	274	#4	5'-8"	
$v_{100}(E)$	24	#4	2'-10"	
$v_{101}(E)$	24	#4	3'-9"	
$v_{102}(E)$	24	#4	4'-7"	
$v_{103}(E)$	134	#4	5'-7"	
$v_{104}(E)$	22	#4	4'-1"	
$v_{105}(E)$	22	#4	2'-8"	
$w_{100}(E)$	15	#4	11'-2"	
$w_{101}(E)$	45	#4	12'-8"	
$w_{102}(E)$	30	#4	21'-1"	
$w_{103}(E)$	30	#4	11'-2"	
$w_{104}(E)$	15	#4	9'-8"	
$w_{105}(E)$	15	#4	8'-0"	
$w_{106}(E)$	15	#4	5'-4"	
$w_{107}(E)$	15	#4	7'-6"	
$w_{108}(E)$	40	#4	4'-2"	
$w_{109}(E)$	30	#4	4'-6"	
Structure Excavation		Cu Yd	21	
Concrete Structures		Cu Yd	20	
Reinforcing Steel, Epoxy Coated		Pound	5430	



SECTION A-A



BARS  $n_{100}(E)$  &  $w_{109}(E)$



BARS  $h_{105}(E)$ ,  $h_{106}(E)$ ,  $w_{105}(E)$ ,  $w_{106}(E)$ ,  $w_{107}(E)$  &  $w_{108}(E)$

DESIGNED	DSE
CHECKED	BG
DRAWN	RTT
CHECKED	BG
DATE:	Aug. 5, 2009

**Stanley Consultants INC.**  
8501 West Higgins Road, Suite 730, Chicago, Illinois 60631-2801  
www.stanleyconsultants.com  
Illinois Firm Registration No.: 1184-001533

WALL DETAILS & BAR SCHEDULE  
IL ROUTE 47  
CORAL STREET RETAINING WALL  
F.A.P. 326-SECT.(105X & 106) WRS-2  
McHENRY COUNTY  
STATION 601+36.60