

Benchmark: Chiseled "X" on northerly bolt of fire hydrant at southeast corner of IL-47 and Reed Road.

STATE OF ILLINOIS
DEPARTMENT OF TRANSPORTATION

ROUTE NO.	SECTION	COUNTY	TOTAL SHEETS	SHEET NO.	SHEET NO. 1
FAP 326	★	McHENRY	502	353	5 SHEETS
FED. ROAD DIST. NO. 1	ILLINOIS	FED. AID PROJECT-			

Contract No. 62882
★(105X & 106) WRS-2

DESIGN SPECIFICATIONS

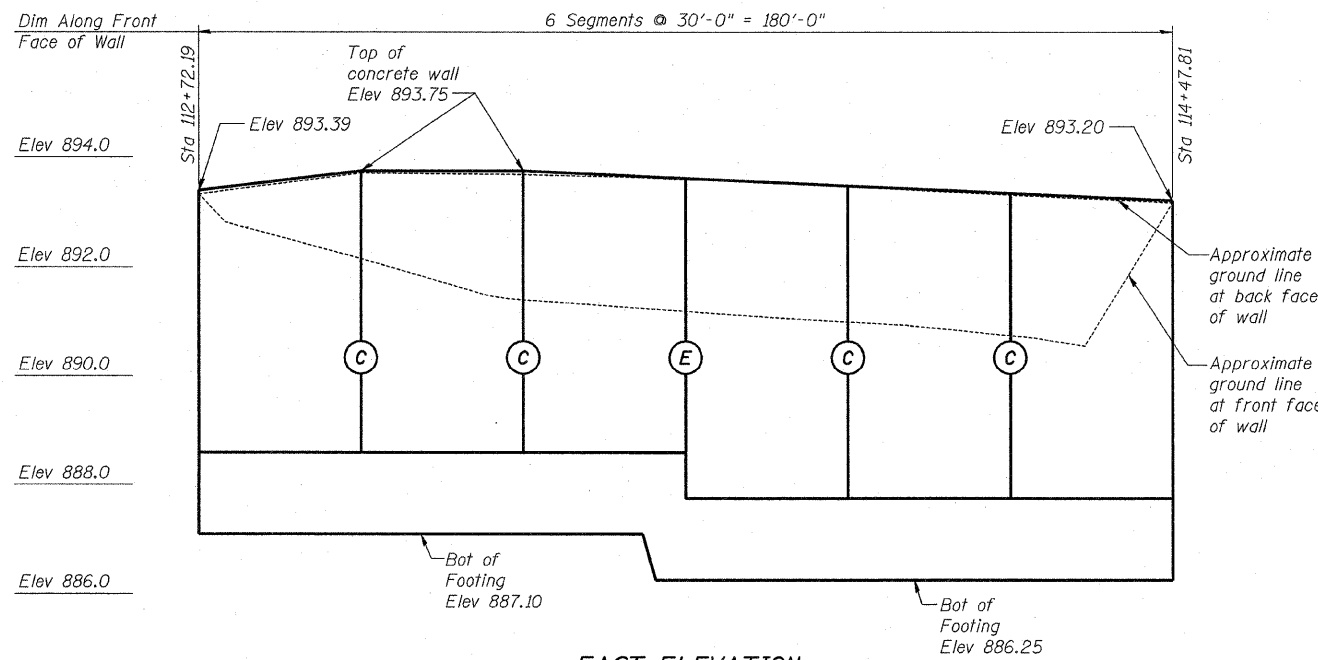
AASHTO 2002 Standard Specification for Highway Bridges.

DESIGN STRESSES

$f'_c = 3,500$ PSI
 $f_y = 60,000$ PSI
Maximum Allowable Soil Bearing Pressure = 4,000 PSF

LEGEND:

- (E) Expansion Joint in wall stem. (See Sheet 4 of 5 for detail)
- (C) Construction Joint in wall stem or footing. (See Detail on Sheet 4 of 5)
- ⊙ Soil Boring Location
- E — E — Existing Electrical
- T — T — Existing Telephone
- X — X — Existing Fence
- Proposed Guardrail

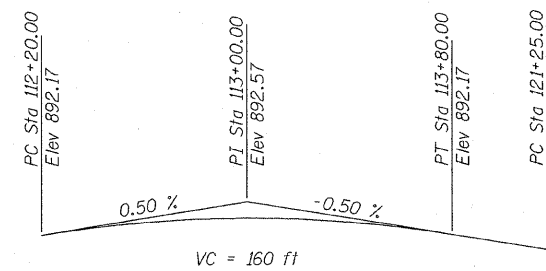


EAST ELEVATION
(Looking West)

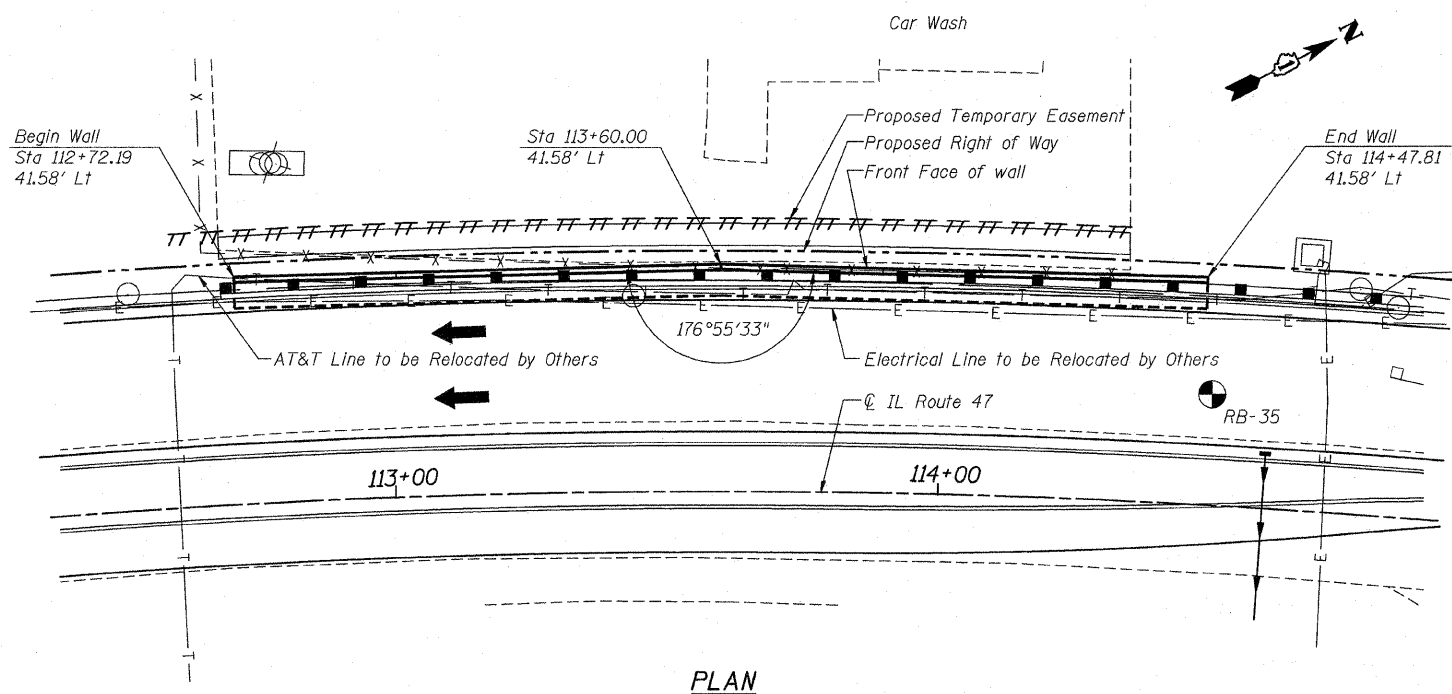
HORIZONTAL CURVE DATA

(Curve P 47-6)

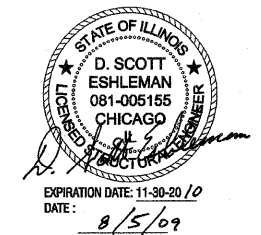
$\Delta = 37^\circ 26' 00.09''$ (Rt)
 $D = 3^\circ 29' 59.40''$
 $T = 554.66'$
 $L = 1069.58'$
 $E = 91.41'$
 $R = 1637.10$
 $S.E. = 0.034 \%$
 $P.C. = Sta. 105+87.41$
 $P.T. = Sta. 116+56.99$
 $P.I. = Sta. 111+42.07$



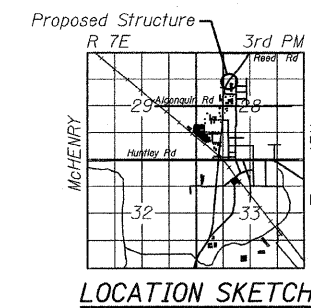
PROFILE GRADE IL ROUTE 47



PLAN



Stanley Consultants Inc.
8501 West Higgins Road, Suite 730, Chicago, Illinois 60631-2801
www.stanleyconsultants.com
Illinois Firm Registration No.: 1184-001533



GENERAL PLAN & ELEVATION
IL ROUTE 47
CAR WASH RETAINING WALL
F.A.P. 326-SECT.(105X & 106) WRS-2
McHENRY COUNTY
STATION 113+60.00

DESIGNED	DSE
CHECKED	BG
DRAWN	TWK
CHECKED	BG
DATE:	Aug. 5, 2009