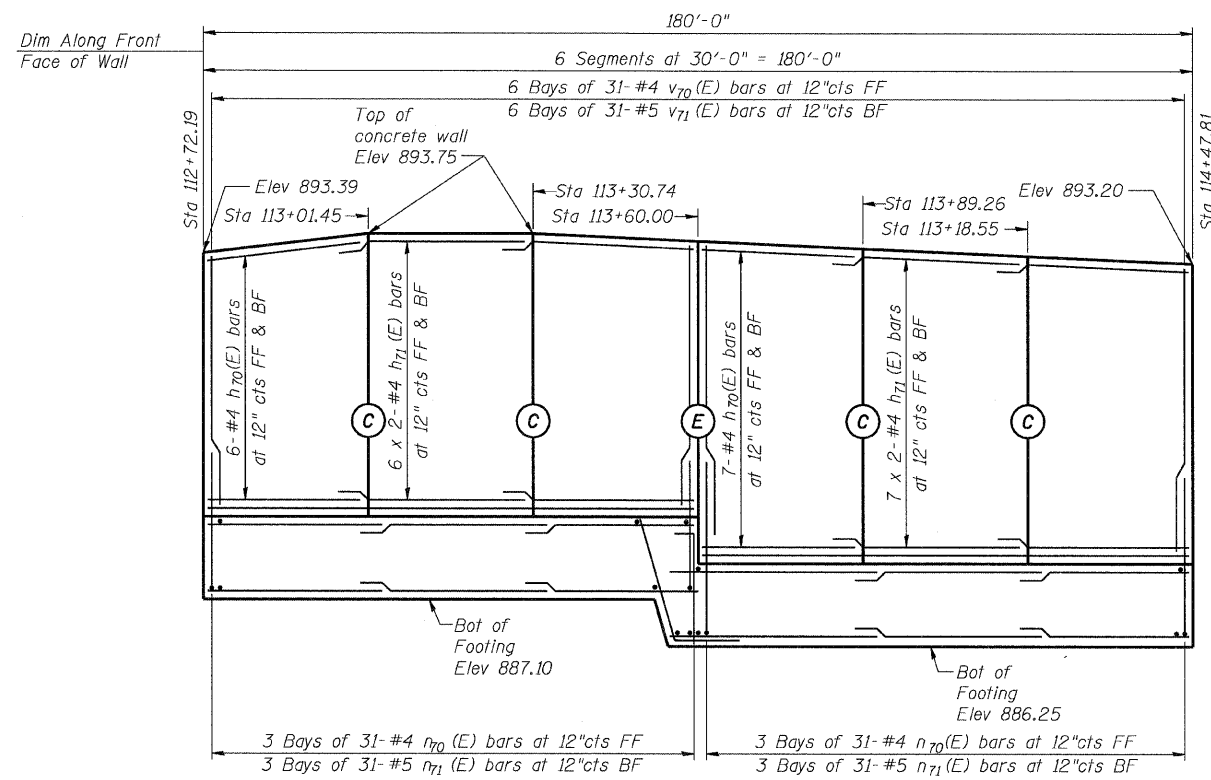


STATE OF ILLINOIS
DEPARTMENT OF TRANSPORTATION

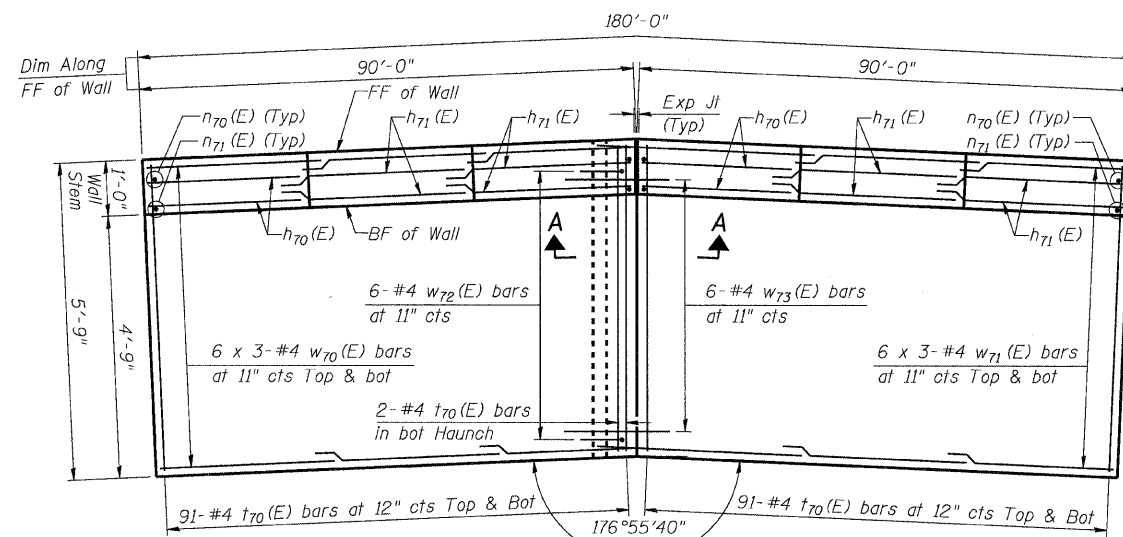
ROUTE NO.	SECTION	COUNTY	TOTAL SHEETS	SHEET NO.	SHEET NO. 3
FAP 326	★	McHENRY	502	355	5 SHEETS
FED. ROAD DIST. NO. 1	ILLINOIS	FED. AID PROJECT-			

Contract No. 62882
★(105X & 106) WRS-2

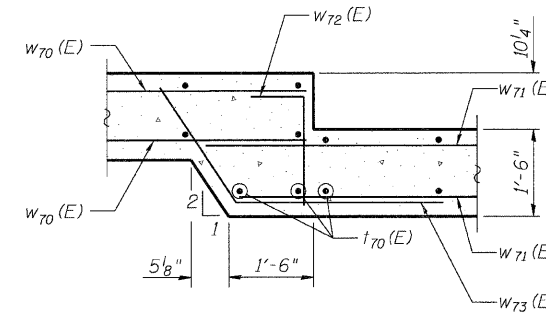
DESIGN SPECIFICATIONS



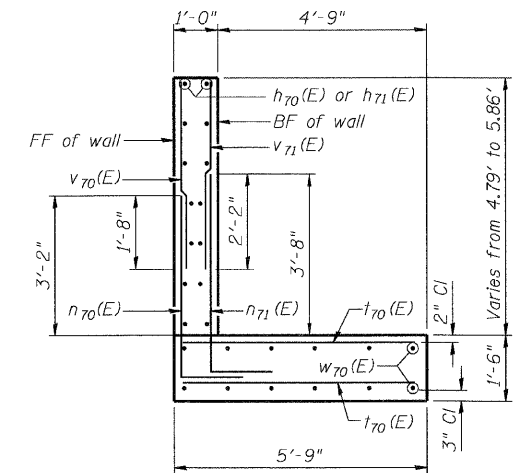
EAST ELEVATION
(Looking West)



FOOTING PLAN



SECTION A-A



TYPICAL SECTION

ABBREVIATION LIST

Bot	Bottom
BF	Back Face
Exp	Expansion
EF	Each Face
FF	Front Face
Jt	Joint
Typ	Typical

MIN BAR LAP

#4 bars = 1'-8"
#5 bars = 2'-2"

NOTES:

- For Bill of Material See Sheet 4 of 5.
- Bars indicated Thus: 6 x 3- #4 Denotes 6 Lines of #4 Bars with 3 Lengths Per Line.
- (E) Expansion Joint in wall stem. (See Sheet 4 of 5 for Detail)
- (C) Construction Joint in wall stem or footing. (See Sheet 4 of 5 for Detail)

DESIGNED	DSE
CHECKED	BG
DRAWN	TWK
CHECKED	BG
DATE:	Aug. 5, 2009

Stanley Consultants INC.
8501 West Higgins Road, Suite 730, Chicago, Illinois 60631-2801
www.stanleyconsultants.com
Illinois Firm Registration No.: 1184-001533

WALL PLAN & ELEVATION
IL ROUTE 47
CAR WASH RETAINING WALL
F.A.P. 326-SECT.(105X & 106) WRS-2
McHENRY COUNTY
STATION 113+60.00