

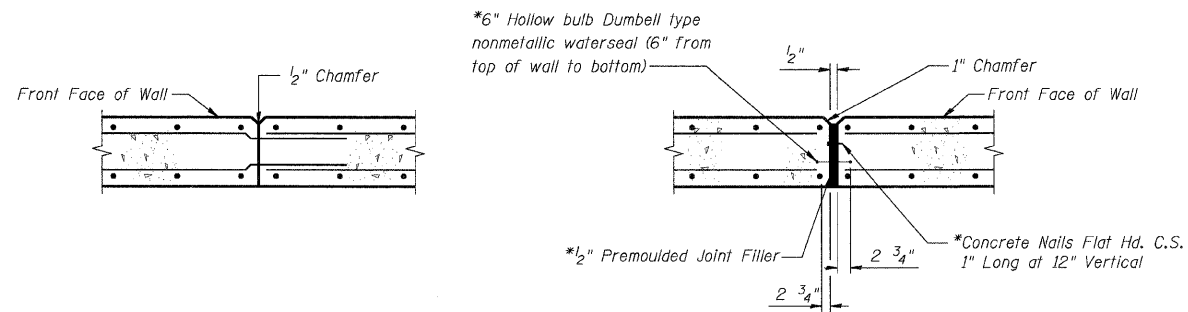
STATE OF ILLINOIS
DEPARTMENT OF TRANSPORTATION

ROUTE NO.	SECTION	COUNTY	TOTAL SHEETS	SHEET NO.	SHEET NO. 4
FAP 326	★	McHENRY	502	356	5 SHEETS
FED. ROAD DIST. NO. 1	ILLINOIS	FED. AID PROJECT			

Contract No. 62882
★(105X & 106) WRS-2

BILL OF MATERIAL

Bar	No.	Size	Length (ft)	Shape
h70(E)	26	#4	29'-8"	—
h71(E)	52	#4	31'-8"	—
n70(E)	186	#4	5'-1"	L
n71(E)	186	#5	5'-9"	L
t70(E)	366	#4	5'-5"	—
v70(E)	186	#4	4'-5"	—
v71(E)	186	#5	4'-5"	—
w70(E)	36	#4	31'-2"	—
w71(E)	36	#4	31'-10"	—
w72(E)	6	#4	3'-7"	Γ
w73(E)	6	#4	5'-6"	∟
Structure Excavation	Cu Yd		292	
Concrete Structures	Cu Yd		94	
Reinforcing Steel, Epoxy Coated	Pound		7,640	

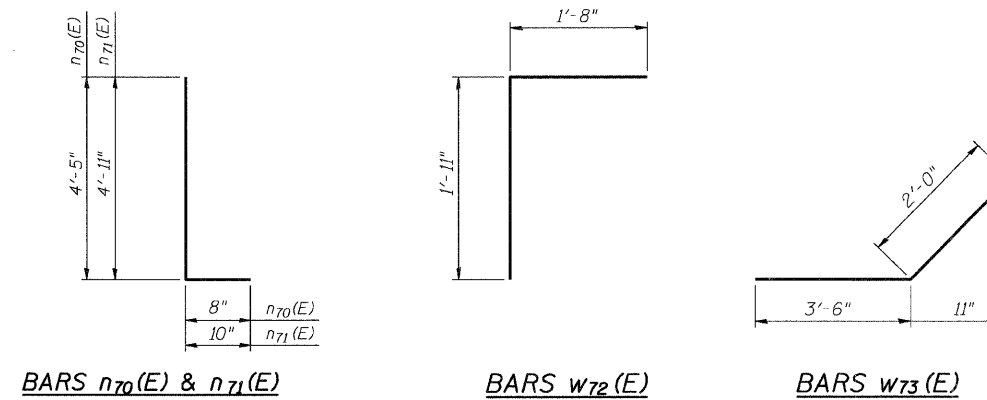


CONSTRUCTION JOINT DETAIL

EXPANSION JOINT DETAIL

(Stem of Wall Only, Not In Footing) * Cost Included With Concrete Structures

RETAINING WALL JOINT DETAILS



DESIGNED	DSE
CHECKED	BG
DRAWN	TWK
CHECKED	BG
DATE:	Aug. 5, 2009

Stanley Consultants INC.
8501 West Higgins Road, Suite 730, Chicago, Illinois 60631-2801
www.stanleyconsultants.com
Illinois Firm Registration No.: 1184-001533

WALL DETAILS & BAR SCHEDULE
IL ROUTE 47
CAR WASH RETAINING WALL
F.A.P. 326-SECT.(105X & 106) WRS-2
McHENRY COUNTY
STATION 113+60.00