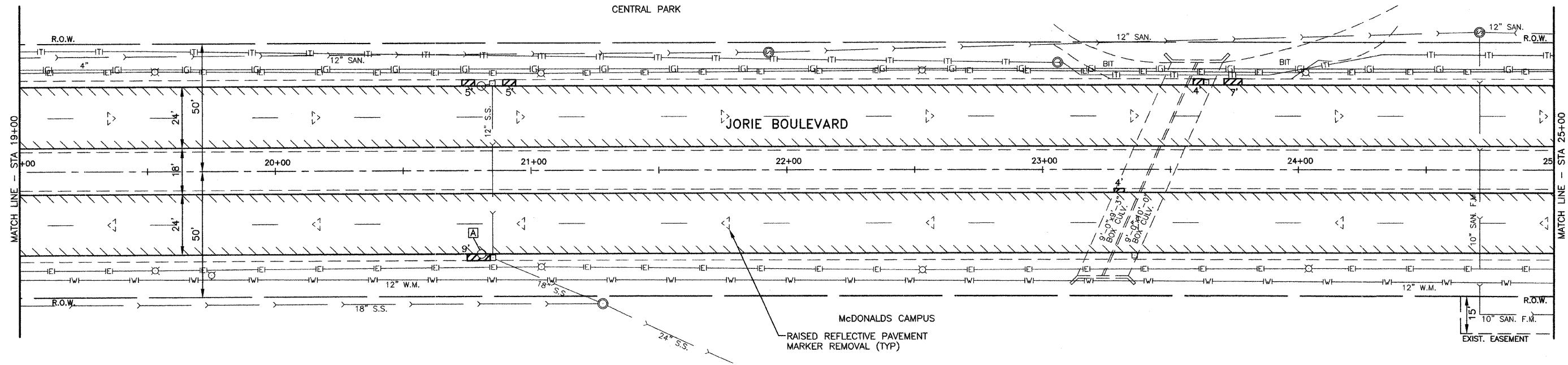
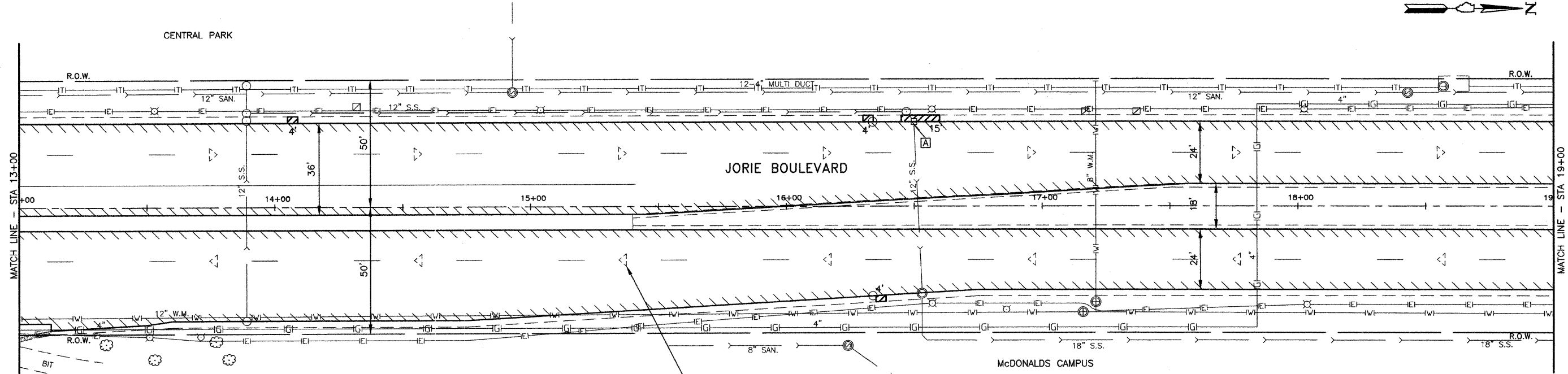
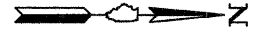


F.A.U. RTE.	SECTION	COUNTY	TOTAL SHEETS	SHEET NO.
2662	08-00041-00-RS	DuPAGE	25	8
STA. 13+00		TO STA. 25+00		
ILLINOIS FED. AID PROJECT				
CONTRACT NO. 63078				



LEGEND

- | | |
|---|--|
| [A] STRUCTURE TO BE ADJUSTED | [SS] STRUCTURE TO BE ADJUSTED SPECIAL |
| [A] STRUCTURE TO BE ADJUSTED WITH NEW FRAME & LID | [R] STRUCTURE TO BE RECONSTRUCTED WITH NEW FRAME & LID |
| [R] STRUCTURE TO BE RECONSTRUCTED | [RM] STRUCTURE TO BE REMOVED |
-
- [Hatched Box] HOT-MIX ASPHALT SURFACE REMOVAL LIMIT
 - [Hatched Box] COMBINATION CURB AND GUTTER REMOVAL OR CURB REMOVAL
 - [Dotted Box] SIDEWALK REMOVAL
 - [Hatched Box] DRIVEWAY REMOVAL AND REPLACEMENT AT CURB REPAIRS
 - * DETECTIBLE WARNINGS

REVISIONS	
NAME	DATE

ILLINOIS DEPARTMENT OF TRANSPORTATION
 F.A.U. ROUTE 2662
 JORIE BOULEVARD

PLAN VIEW
 STA 13+00 TO STA 25+00

SCALE: 1"=20'
 DATE: 03/04/08

DRAWN BY: BCD
 CHECKED BY: JDM

JJB JAMES J. BENES & ASSOCIATES, INC.
 950 Warrenville Road, Suite 101, Lisle, Illinois 60532
 Tel. (630) 719-7570 • Fax (630) 719-7589