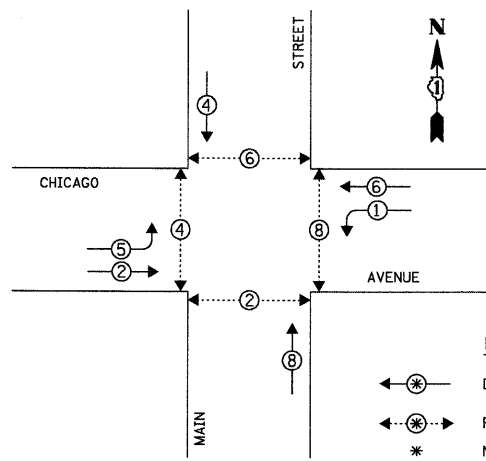


CHRISTOPHER B. BURKE ENGINEERING LTD.
 8575 West Higgins Road, Suite 600
 Rosemont, Illinois 60018
 (847) 823-0500

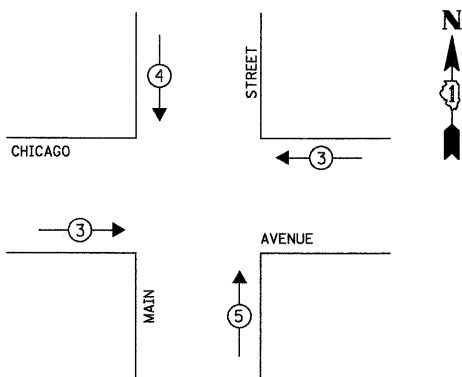
CONTROLLER SEQUENCE



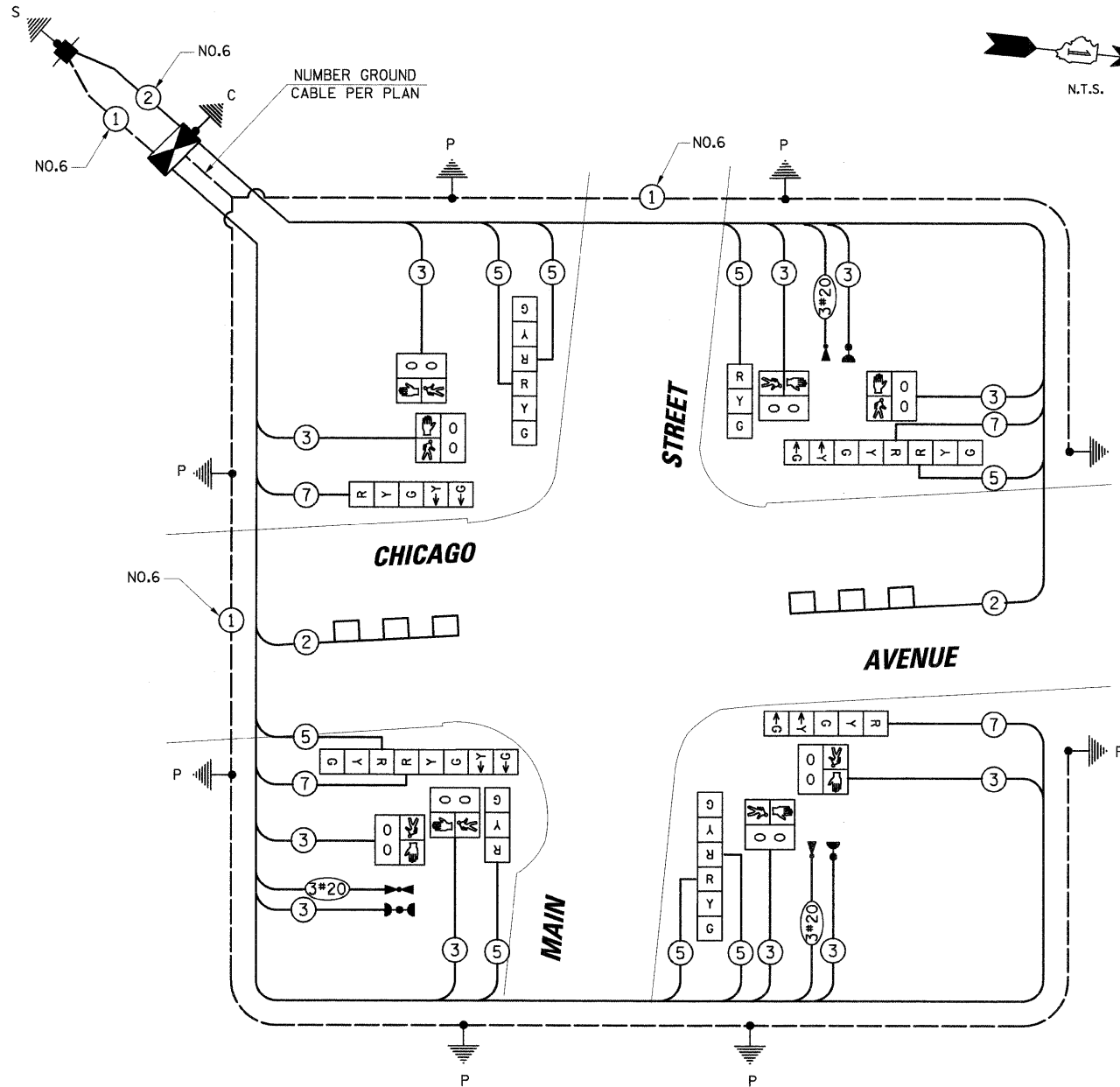
LEGEND
 ←*→ DUAL ENTRY PHASE
 ←*→ PEDESTRIAN PHASE
 * NUMBER REFERS TO ASSOCIATED PHASE

PHASE DESIGNATION DIAGRAM

EMERGENCY VEHICLE PREEMPTION SEQUENCE



PROPOSED EMERGENCY VEHICLE PREEMPTORS			
EMERGENCY VEHICLE PREEMPTOR	3	4	5
MOVEMENT	←	↓	↑



CABLE PLAN LEGEND

EXISTING	PROPOSED	DESCRIPTION
(G)	(G)	8" (200mm) TRAFFIC SIGNAL SECTION
(R)	(R)	12" (300mm) TRAFFIC SIGNAL SECTION
(W)	(W)	12" (300mm) PEDESTRIAN SIGNAL SECTION
(O)	(O)	12" (300mm) PEDESTRIAN SIGNAL SECTION
(C)	(C)	CONTROLLER CABINET
(S)	(S)	SERVICE INSTALLATION
(T)	(T)	TELEPHONE INSTALLATION
(V)	(V)	VEHICLE DETECTOR, INDUCTION LOOP
(M)	(M)	MAGNETIC DETECTOR
(E)	(E)	EMERGENCY VEHICLE LIGHT DETECTOR
(B)	(B)	CONFIRMATION BEACON
(P)	(P)	PUSHBUTTON DETECTOR
(2)	(2)	DENOTES NUMBER OF CONDUCTORS.
(1)	(1)	ALL CABLE NO. 14 EXCEPT AS INDICATED.
(24)	(24)	ALL LOOP DETECTOR CABLE TO BE SHIELDED.
(1)	(1)	GROUND CABLE IN CONDUIT NO. 6 SOLID COPPER (GREEN)
(24)	(24)	FIBER OPTIC CABLE IN CONDUIT NO. 62.5/125 2-NM12F SM12F
(R)	(R)	SIGNAL FACE WITH BACKPLATE.
(P)	(P)	"P" INDICATES PROGRAMMED HEAD.
(R)	(R)	RAILROAD CONTROL CABINET
(E)	(E)	ILLUMINATED SIGN "NO LEFT TURN"
(E)	(E)	ILLUMINATED SIGN "NO RIGHT TURN"
(H/C)	(H/C)	GROUND ROD AT HANDHOLE (H), DOUBLE HANDHOLE (H), OR CONTROLLER (C)
(P)	(P)	GROUND ROD AT POST (P) OR MAST ARM POLE (MA)
(S)	(S)	GROUND ROD AT ELECTRIC SERVICE INSTALLATION

SCHEDULE OF QUANTITIES

ITEM	UNIT	TOTAL
EXPLORATION TRENCH, SPECIAL	EACH	4
DETECTABLE WARNINGS	SQ FT	123
COMBINATION CONCRETE CURB AND GUTTER REMOVAL AND REPLACEMENT	FOOT	126
SIDEWALK REMOVAL AND REPLACEMENT (SPECIAL)	SQ FT	1655
SIGN PANEL - TYPE 1	SQ FT	7.5
THERMOPLASTIC PAVEMENT MARKING - LETTERS & SYMBOLS	SQ FT	109.2
THERMOPLASTIC PAVEMENT MARKING - LINE 4"	FOOT	1001
THERMOPLASTIC PAVEMENT MARKING - LINE 6"	FOOT	635
THERMOPLASTIC PAVEMENT MARKING - LINE 24"	FOOT	91
THERMOPLASTIC PAVEMENT MARKING REMOVAL	SQ FT	109.2
THERMOPLASTIC PAVEMENT MARKING REMOVAL	FOOT	1558
CONDUIT IN TRENCH, 2 1/2" DIA., GALVANIZED STEEL	FOOT	90
CONDUIT IN TRENCH, 4" DIA., GALVANIZED STEEL	FOOT	10
CONDUIT PUSHED, 2" DIA., GALVANIZED STEEL	FOOT	49
CONDUIT PUSHED, 4" DIA., GALVANIZED STEEL	FOOT	169
HANDHOLE	EACH	3
DOUBLE HANDHOLE	EACH	1
TRENCH AND BACKFILL FOR ELECTRICAL WORK	FOOT	225
FULL-ACTUATED CONTROLLER AND TYPE III CABINET, SPECIAL	EACH	1
ELECTRIC CABLE IN CONDUIT, SIGNAL NO. 14 3C	FOOT	1351
ELECTRIC CABLE IN CONDUIT, SIGNAL NO. 14 5C	FOOT	889
ELECTRIC CABLE IN CONDUIT, SIGNAL NO. 14 7C	FOOT	500
ELECTRIC CABLE IN CONDUIT, LEAD-IN, NO. 14, 1 PR	FOOT	175
ELECTRIC CABLE IN CONDUIT, SERVICE, NO. 6 2C	FOOT	64
TRAFFIC SIGNAL POST, GALVANIZED STEEL, 14 FT	EACH	2
TRAFFIC SIGNAL POST, GALVANIZED STEEL, 16 FT	EACH	3
TRAFFIC SIGNAL POST, GALVANIZED STEEL, 18 FT	EACH	3
CONCRETE FOUNDATION, TYPE A	FOOT	32
CONCRETE FOUNDATION, TYPE D	FOOT	4
SIGNAL HEAD, LED, 1-FACE, 3-SECTION, BRACKET MOUNTED	EACH	2
SIGNAL HEAD, LED, 1-FACE, 5-SECTION, BRACKET MOUNTED	EACH	2
SIGNAL HEAD, LED, 2-FACE, 3-SECTION, BRACKET MOUNTED	EACH	2
SIGNAL HEAD, LED, 2-FACE, 1-3 SECTION, 1-5 SECTION, BRACKET MOUNTED	EACH	2
PEDESTRIAN SIGNAL HEAD, LED, 1-FACE, BRACKET MOUNTED WITH COUNTDOWN TIMER	EACH	8
INDUCTIVE LOOP DETECTOR	EACH	2
DETECTOR LOOP, TYPE I	FOOT	263
LIGHT DETECTOR	EACH	3
LIGHT DETECTOR AMPLIFIER	EACH	1
TEMPORARY TRAFFIC SIGNAL INSTALLATION, SPECIAL	EACH	1
REMOVE EXISTING TRAFFIC SIGNAL EQUIPMENT	EACH	1
REMOVE EXISTING HANDHOLE	EACH	2
REMOVE EXISTING CONCRETE FOUNDATION	EACH	7
SERVICE INSTALLATION - POLE MOUNTED	EACH	1
ELECTRIC CABLE IN CONDUIT, GROUND, NO. 6 1C	FOOT	470
ELECTRIC CABLE IN CONDUIT, NO. 20 3C, TWISTED, SHIELDED	FOOT	418

NOTE:
 PEDESTRIAN PHASES 2, 4, 6, AND 8 SHALL BE ON RECALL.

RESTORATION OF WORK AREA. RESTORATION OF THE TRAFFIC SIGNAL WORK AREA SHALL BE INCIDENTAL TO THE RELATED PAY ITEM SUCH AS FOUNDATION, CONDUIT, HANDHOLE, TRENCH AND BACKFILL, ETC., AND NO EXTRA COMPENSATION SHALL BE ALLOWED. ALL ROADWAY SURFACES SUCH AS SHOULDERS, MEDIANS, SIDEWALKS, PAVEMENT, ETC. SHALL BE REPLACED IN KIND. ALL DAMAGE TO MOWED LAWNS SHALL BE REPLACED WITH AN APPROVED SOD, AND ALL DAMAGE TO UNMOWED FIELDS SHALL BE SEEDED IN ACCORDANCE WITH STANDARD SPECIFICATIONS 252 AND 250 RESPECTIVELY.

NOTE:
 THE TRAFFIC SIGNAL CONTROLLER EQUIPMENT FOR THIS PROJECT SHALL BE "EAGLE" TO MATCH THE EXISTING ADJACENT SYSTEM.

I.D.O.T. TRAFFIC SIGNAL INSTALLATION ELECTRICAL SERVICE REQUIREMENTS

TYPE	NO. OF LAMPS	WATTAGE X INCAND.	LED % OPERATION	TOTAL WATTAGE
SIGNAL (RED)	12	17	0.50	102.00
(YELLOW)	12	25	0.25	75.00
(GREEN)	12	15	0.25	45.00
ARROW	8	12	0.10	9.60
PED. SIGNAL	8	25	1.00	200.00
CONTROLLER	1	100	1.00	100.00
ILLUM. SIGN	-	25	0.05	-
FLASHER	-	-	0.50	-

ENERGY COSTS TO: TOTAL = 531.60

CITY OF EVANSTON
 2100 RIDGE AVENUE
 EVANSTON, ILLINOIS 60201-2798
 ENERGY SUPPLY: CONTACT: LARRY SHANK
 PHONE: (847) 816-5465
 COMPANY: COMED

FOUNDATION (DEPTH)	FT. (m)	CABLE SLACK	FT. (m)	VERTICAL	FT. (m)
TYPE A - POST	4 (1.2)	HANDHOLE	6.5 (2.0)	ALL FOUNDATIONS	3.5 (1.0)
D - CONTROLLER	4 (1.2)	DOUBLE HANDHOLE	13 (4.0)	MAST ARM (L) POLE	20'+L-2'
E - M. ARM POLE	-	SIGNAL POST	2 (1.0)	(6m+L-0.6m)	-
24" (600mm)	10 (3.0)	CONTROLLER CAB.	1 (0.5)	BRACKET MOUNTED	13 (4.0)
30" (750mm)	15 (4.6)	FIBER OPTIC	13 (4.0)	PED. PUSHBUTTON	4 (1.2)
36" (900mm)	15 (4.6)	ELECTRIC SERVICE	1 (0.5)	ELECTRIC SERVICE	13.5 (4.1)
		GROUND CABLE	1 (0.5)	SERVICE TO GROUND	13.5 (4.1)
				POST MOUNTED	6 (1.8)

STATE OF ILLINOIS
 DEPARTMENT OF TRANSPORTATION

SCHEDULE OF QUANTITIES, CABLE PLAN, PHASE DESIGNATION
 DIAGRAM AND EMERGENCY VEHICLE PREEMPTION SEQUENCE
 CHICAGO AVENUE AT MAIN STREET

FILE NAME =	USER NAME = FPAICONE	DESIGNED -	REVISED -
Na\EVANSTON\062021\Traffic\CAV\main-ohs.dgn		DRAWN -	REVISED -
		CHECKED -	REVISED -
		DATE -	REVISED -

F.A.U. RTE.	SECTION	COUNTY	TOTAL SHEETS	SHEET NO.
2853	05-00240-00-TL	COOK	24	16
CONTRACT NO. 63111				
FED. ROAD DIST. NO.		ILLINOIS FED. AID PROJECT		