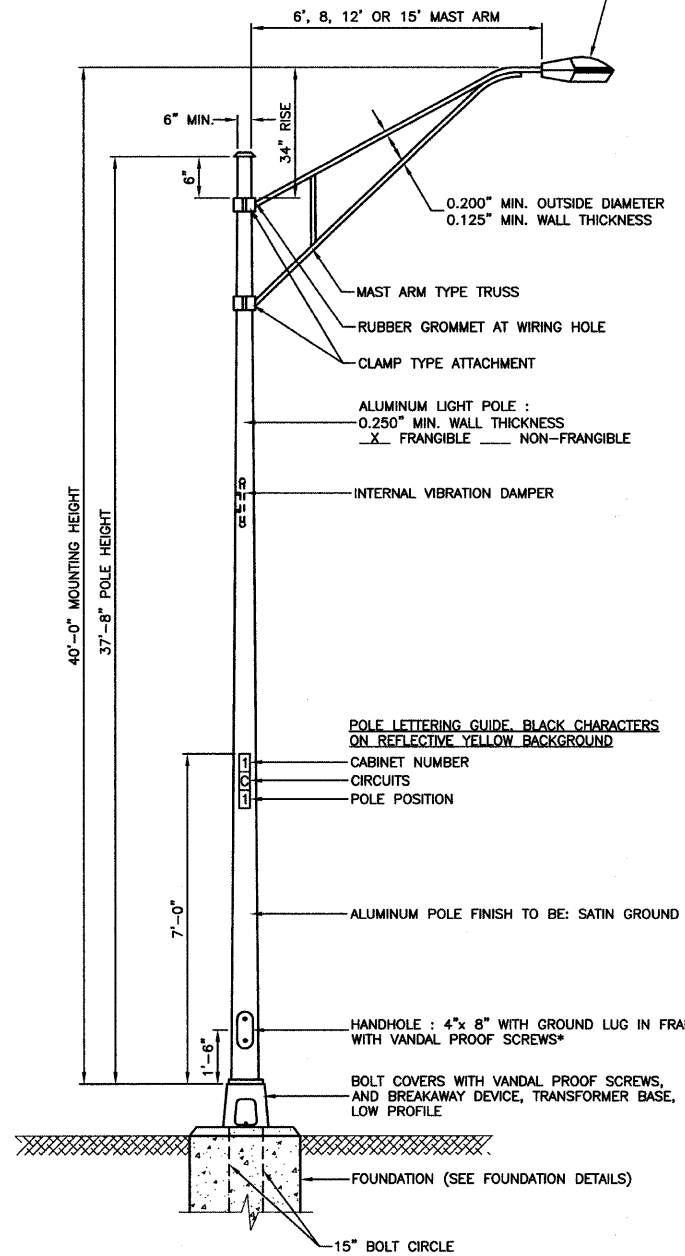


DATE	
BY	
REVISIONS	
PLANNED	
ALIGNED	
CHECKED	
NOTED	
FILE NAME	
NO.	
PLAN	
NOTE BOOK	

DATE	
BY	
REVISIONS	
PLANNED	
ALIGNED	
CHECKED	
NOTED	
FILE NAME	
NO.	
PROFILE	
NOTE BOOK	

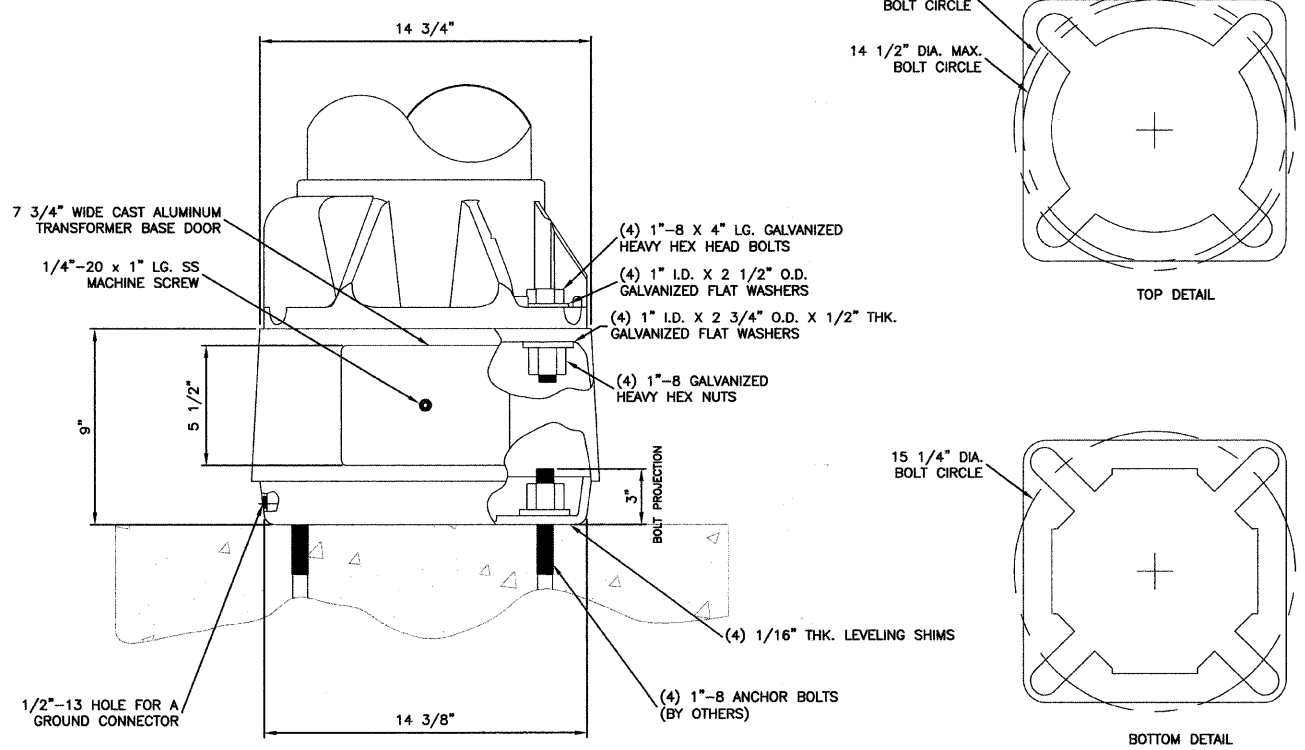
LUMINAIRE:
 250 WATT HIGH PRESSURE SODIUM LAMP
 240 VOLT BALLAST
 I.E.S. TYPE: MC III LIGHT DISTRIBUTION,
 FULL CUTOFF
 LENS TYPE: FLAT
 INITIAL LAMP LUMENS: 28,000
 LAMP LIFE: 24,000 HOURS

IMPORTANT NOTE:
 TRANSFORMER BASE AND LIGHTPOLE
 TO BE LEVELED AS ONE UNIT. USING
 LEVELING SHIMS IF REQUIRED.

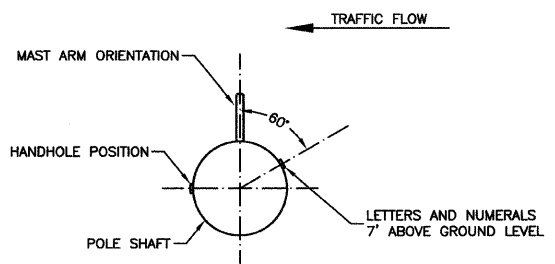


- NOTES:**
1. THE LIGHTING UNITS SHALL MEET AASHTO DESIGN CRITERIA. DESIGN FOR 90 M.P.H. WIND WITH 30% GUST AND 75 POUND LUMINAIRE HAVING AN E.P.A. OF 1.6 SQ. FT. AND PROPER ICE LOADING.
 2. ALUMINUM ALLOY 6063-T6 SHALL BE USED.
 3. LIGHT POLE AND ASSOCIATED EQUIPMENT TO BE U.L. LISTED

TYPICAL POLE INSTALLATION



BREAKAWAY TRANSFORMER BASE DETAIL



POSITION OF HANDHOLE AND NUMERALS ON POLE



FILE NAME = 09321-DTLS-01 - P02	USER NAME =	DESIGNED - PAP	REVISED -	STATE OF ILLINOIS DEPARTMENT OF TRANSPORTATION	OAK AVE. TO WENTWORTH AVE. STREET LIGHTING DETAILS				F.A.U. RTE.	SECTION	COUNTY	TOTAL SHEETS	SHEET NO.
	PLOT SCALE = N/A	CHECKED - EJT	REVISED -		1683	09-00166-01-LT	COOK	12	8				
	PLOT DATE = 10-19-09	DRAWN - MJD	REVISED -		CONTRACT NO. 63285								
		CHECKED - DWS	REVISED -		FED. ROAD DIST. NO. 1 ILLINOIS FED. AID PROJECT 9003(S35)								
					SCALE: N/A	SHEET NO. 8 OF 12 SHEETS	STA. N/A	TO STA. N/A					