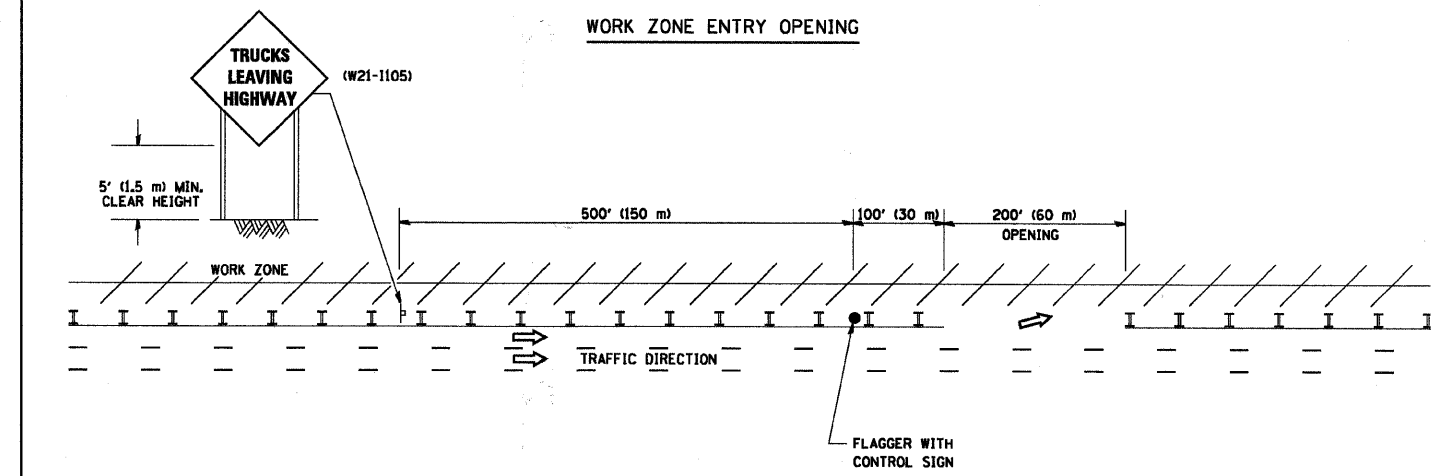
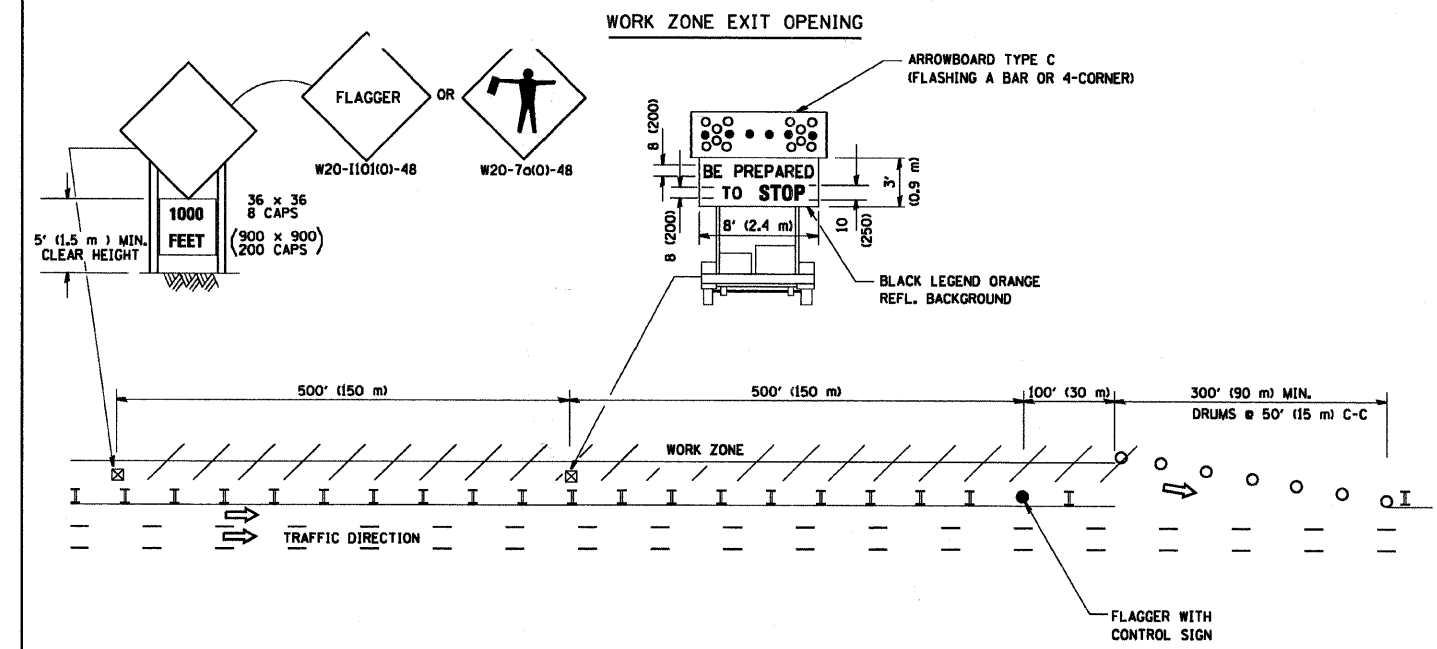


F.A.U. RTE.	SECTION	COUNTY	TOTAL SHEETS	SHEET NO.
* 09-00017-00-RS	WILL		9	9
STA.		TO STA.		
FED. ROAD DIST. NO	ILLINOIS	FED AID PROJECT ARA-9003(381)		

*FAU 0407 CHURCH ROAD
CONTRACT NO. 63303

SIGNING FOR FLAGGING OPERATIONS AT WORK ZONE OPENINGS



NOTES:

1. The Arrowboard, the Flagger Ahead trailer mounted sign, and the Trucks Leaving Highway sign shall be removed or turned away from traffic and the exit and entry openings shall be closed when the flagging operation ceases.
2. Work Zone Exit Openings should be a minimum of one half mile apart.
3. Exiting the work zone at any place other than at a Work Zone Exit Opening will be prohibited.
4. All vehicles shall enter the work zone at entry openings, using their turn signals to warn motorists

ALL DIMENSIONS ARE IN INCHES (MILLIMETERS)
UNLESS OTHERWISE SHOWN

COPYRIGHT © 2003 BY BAXTER & WOODMAN, INC.
 STATE OF ILLINOIS - PROFESSIONAL DESIGN FIRM
 No. 017-0712/2003
 506023
 W:\distatd\2201616
 WOODMAN
 Consulting Engineers

FILE NAME = BAXTER	USER NAME = gaglianobt	DESIGNED -	REVISED - D.W.S. 08-98
W:\distatd\2201616		DRAWN -	REVISED - J.A.F. 04-03
	PLOT SCALE = 50.000' / IN.	CHECKED -	REVISED - J.A.F. 02-06
	PLOT DATE = 1/4/2008	DATE -	REVISED - S.P.B. 01-07

STATE OF ILLINOIS
DEPARTMENT OF TRANSPORTATION

SIGNING FOR FLAGGING OPERATIONS AT WORK ZONE OPENINGS			
SCALE: NONE	SHEET NO. 1 OF 1 SHEETS	STA.	TO STA.

F.A.U. RTE.	SECTION	COUNTY	TOTAL SHEETS	SHEET NO.
* 09-00017-00-RS	WILL		9	9
TC-18		CONTRACT NO. 63303		
FED. ROAD DIST. NO. 1 ILLINOIS FED. AID PROJECT				