

INDEX OF SHEETS

SHEET NO.	SHEET NAME
1	COVER
2	GENERAL NOTES & LIST OF HIGHWAY STANDARDS
3	SUMMARY OF QUANTITIES
4	TYPICAL CROSS SECTIONS AND DETAILS
5	173RD STREET, ELM DRIVE PLANS
6	ELM DRIVE PLAN
7	CURB OR CURB AND GUTTER REMOVAL AND REPLACEMENT, BD-24, DISTRICT ONE
8	BUTT JOINT AND HMA TAPER DETAILS, BD-32, DISTRICT ONE
9	DISTRICT ONE, TYPICAL PAVEMENT MARKINGS, TC-13

STATE OF ILLINOIS
DEPARTMENT OF TRANSPORTATION
DIVISION OF HIGHWAYS
**PLANS FOR PROPOSED
FEDERAL AID HIGHWAY**
VILLAGE OF HAZEL CREST
FAU 1617 (173RD ST. AND ELM DR.),
FROM KEDZIE AVENUE TO LAUREL LANE
PAVEMENT RESURFACING
COOK COUNTY
SECTION 09-00077-00-RS
PROJECT ARA-9003 (342)
C-91-659-09

FAU RTE.	SECTION	COUNTY	TOTAL SHEETS	SHEET NO.
1617	09-00077-00-RS	COOK	9	1
STA.		TO STA.		
FED. ROAD DIST. NO.		ILLINOIS		



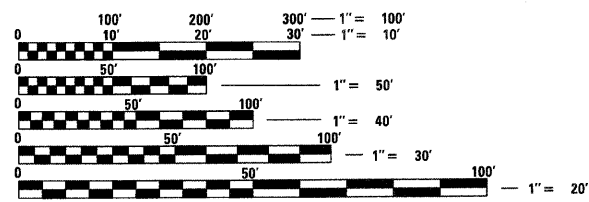
GLOBETROTTERS ENGINEERING CORP.: CHANDRA S. TRIVEDI (312)697-3580

FIELD ENGINEER : MEL MANCOBA (847) 705-4408

**PROJECT LOCATED IN
VILLAGE OF HAZEL CREST**

**DESIGN DESIGNATION:
390(28) COLLECTOR 2.51 (HMA8)**

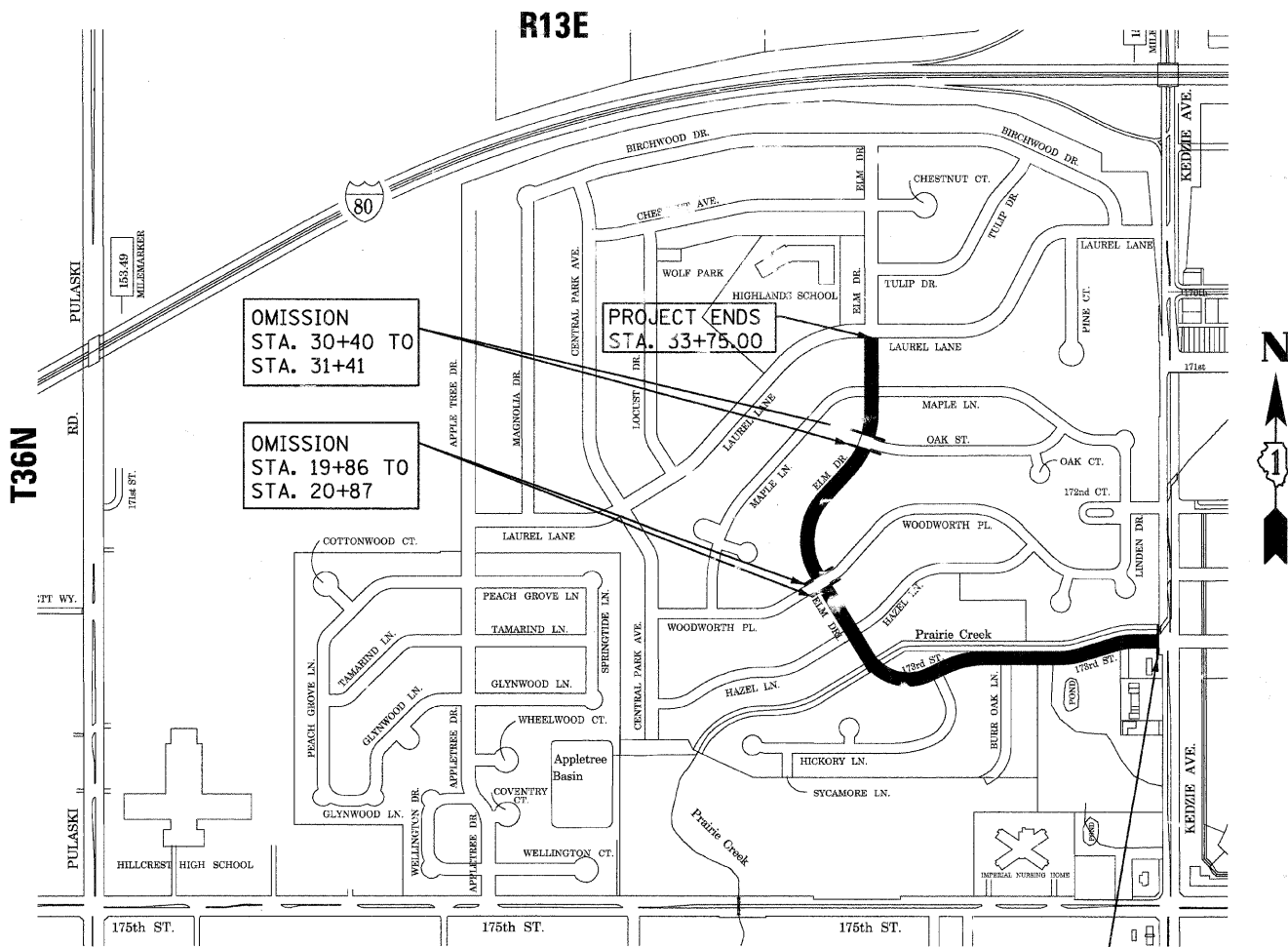
**TRAFFIC DATA:
ADT=375**
SPEED LIMIT ON 173RD STREET / ELM DRIVE - 25 MPH



FULL SIZE PLANS HAVE BEEN PREPARED USING STANDARD ENGINEERING SCALES. REDUCED SIZED PLANS WILL NOT CONFORM TO STANDARD SCALES. IN MAKING MEASUREMENTS ON REDUCED PLANS, THE ABOVE SCALES MAY BE USED.

J.U.L.I.E.
JOINT UTILITY LOCATION INFORMATION FOR EXCAVATION
1-800-892-0123

CONTRACT NO. 63308



LOCATION MAP
N.T.S.

GROSS LENGTH OF PROJECT = 3,375.00 FT = 0.64 MILE
NET LENGTH OF PROJECT = 3,175.00 FT = 0.60 MILE

**STATE OF ILLINOIS
DEPARTMENT OF TRANSPORTATION
DIVISION OF HIGHWAYS**

Approved: Robert Donaldson 10/22/2009 DATE
ROBERT D. DONALDSON, Mayor
Village President, Village of Hazel Crest

Passed: OCTOBER 27, 2009 DATE
C. Hecht
District 1 Engineer of Local Roads & Streets

Releasing for Bid
Based on Limited Review: OCTOBER 29, 2009 DATE
Diana M. O'Keefe
Deputy Director of Highways, Region 1 Engineer



LICENSE EXPIRATION DATE: 11/30/09

PRINTED BY AUTHORITY OF THE STATE OF ILLINOIS