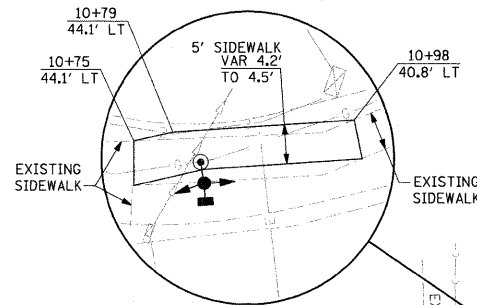
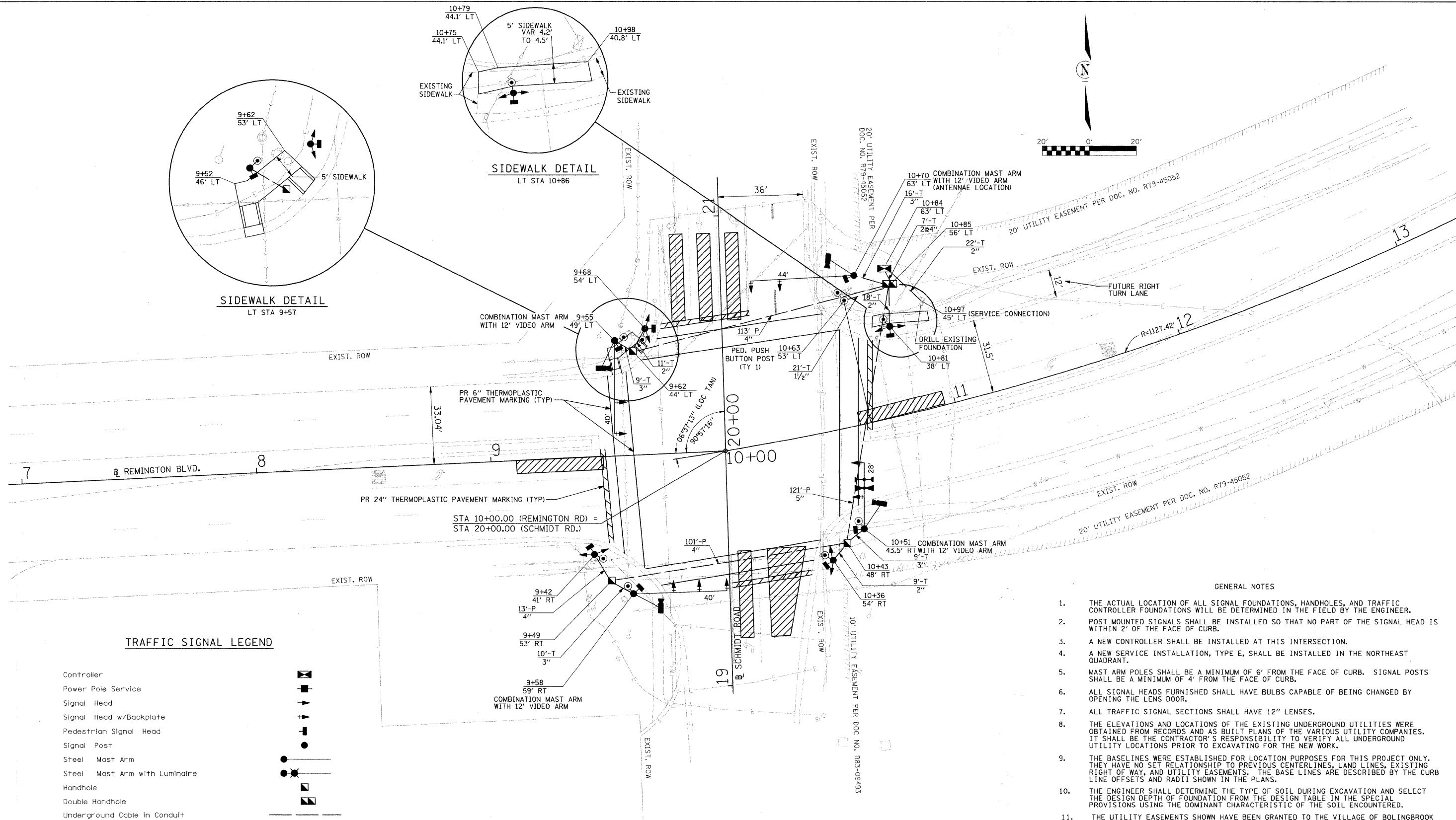
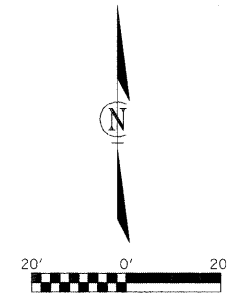


SIDWALK DETAIL
LT STA 9+57



SIDWALK DETAIL
LT STA 10+86



TRAFFIC SIGNAL LEGEND

- Controller
- Power Pole Service
- Signal Head
- Signal Head w/Backplate
- Pedestrian Signal Head
- Signal Post
- Steel Mast Arm
- Steel Mast Arm with Luminaire
- Handhole
- Double Handhole
- Underground Cable in Conduit
- Priority Veh. Detector
- Confirmation Beacon
- Video Vehicle Sensor
- Video Detection Zone
- Pedestrian Push Button

GENERAL NOTES

1. THE ACTUAL LOCATION OF ALL SIGNAL FOUNDATIONS, HANDHOLES, AND TRAFFIC CONTROLLER FOUNDATIONS WILL BE DETERMINED IN THE FIELD BY THE ENGINEER.
2. POST MOUNTED SIGNALS SHALL BE INSTALLED SO THAT NO PART OF THE SIGNAL HEAD IS WITHIN 2' OF THE FACE OF CURB.
3. A NEW CONTROLLER SHALL BE INSTALLED AT THIS INTERSECTION.
4. A NEW SERVICE INSTALLATION, TYPE E, SHALL BE INSTALLED IN THE NORTHEAST QUADRANT.
5. MAST ARM POLES SHALL BE A MINIMUM OF 6' FROM THE FACE OF CURB. SIGNAL POSTS SHALL BE A MINIMUM OF 4' FROM THE FACE OF CURB.
6. ALL SIGNAL HEADS FURNISHED SHALL HAVE BULBS CAPABLE OF BEING CHANGED BY OPENING THE LENS DOOR.
7. ALL TRAFFIC SIGNAL SECTIONS SHALL HAVE 12" LENSES.
8. THE ELEVATIONS AND LOCATIONS OF THE EXISTING UNDERGROUND UTILITIES WERE OBTAINED FROM RECORDS AND AS BUILT PLANS OF THE VARIOUS UTILITY COMPANIES. IT SHALL BE THE CONTRACTOR'S RESPONSIBILITY TO VERIFY ALL UNDERGROUND UTILITY LOCATIONS PRIOR TO EXCAVATING FOR THE NEW WORK.
9. THE BASELINES WERE ESTABLISHED FOR LOCATION PURPOSES FOR THIS PROJECT ONLY. THEY HAVE NO SET RELATIONSHIP TO PREVIOUS CENTERLINES, LAND LINES, EXISTING RIGHT OF WAY, AND UTILITY EASEMENTS. THE BASE LINES ARE DESCRIBED BY THE CURB LINE OFFSETS AND RADII SHOWN IN THE PLANS.
10. THE ENGINEER SHALL DETERMINE THE TYPE OF SOIL DURING EXCAVATION AND SELECT THE DESIGN DEPTH OF FOUNDATION FROM THE DESIGN TABLE IN THE SPECIAL PROVISIONS USING THE DOMINANT CHARACTERISTIC OF THE SOIL ENCOUNTERED.
11. THE UTILITY EASEMENTS SHOWN HAVE BEEN GRANTED TO THE VILLAGE OF BOLINGBROOK AND THE REGULATED UTILITIES AS DESCRIBED IN THE REFERENCED DOCUMENTS.

RESTORATION OF THE WORK AREA SHALL BE INCIDENTAL TO THE RELATED ITEMS AND SHALL BE REPLACED IN KIND. ALL DAMAGE TO UNMOWED FIELDS SHALL BE SEEDING IN ACCORDANCE WITH THE STANDARD SPECIFICATIONS 252 AND 250, RESPECTIVELY.

FILE NAME = TrafficSignalPlan.dgn	USER NAME = dwoznarski	DESIGNED - WTS	REVISED -	STATE OF ILLINOIS DEPARTMENT OF TRANSPORTATION	TRAFFIC SIGNAL PLANS			F.A. RTE.	SECTION	COUNTY	TOTAL SHEETS	SHEET NO.	
		DRAWN - DLB	REVISED -		REMINGTON BLVD & SCHMIDT ROAD				09-00052-00-TL	WILL	10	3	
		CHECKED - DJ	REVISED -		SCALE: 1"=20' SHEET NO. 3 OF 10 SHEETS STA. TO STA.								
		DATE - 8/09	REVISED -		ILLINOIS FED. AID PROJECT								