

STATE OF ILLINOIS  
DEPARTMENT OF TRANSPORTATION  
DIVISION OF HIGHWAYS

**PLANS FOR PROPOSED  
FEDERAL AID HIGHWAY**

FAU 2887 (EAST END AVENUE)  
26TH STREET (FAU 1633) TO LINCOLN HIGHWAY (FAP 353)  
LOCAL AGENCY PAVEMENT PRESERVATION PROGRAM

STREET RESURFACING  
SECTION NO.: 09-00225-00-RS  
PROJECT NO.: ARA-9003(337)  
JOB NO. C-91-653-09  
CITY of CHICAGO HEIGHTS  
COOK COUNTY

F. A. I. D. NO.	SECTION	COUNTY	TOTAL SHEETS	SHEET NO.
2887	09-00225-00-RS	COOK	18	1
STA. 0+41	TO STA. 54+18			
FED. ROAD DIST. NO.	BLDG. NO.	FED. AID PROJECT	ARA-9003(337)	

CONTRACT #63314

**INDEX OF SHEETS**

- COVER SHEET, INDEX OF SHEETS, & STATE STANDARDS
- SUMMARY OF QUANTITIES, & GENERAL NOTES
- TYPICAL CROSS SECTIONS
- 6. PAVEMENT PLAN
- 9. STRIPING PLAN
- 18. IDOT DISTRICT 1 STANDARD DETAILS

**HIGHWAY STANDARDS**

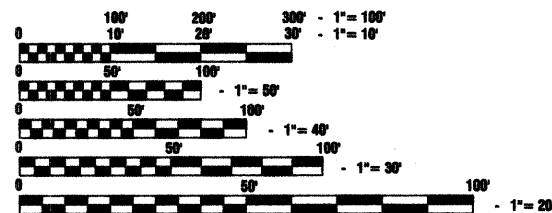
- 000001-05 STANDARD SYMBOLS, ABBREVIATIONS AND PATTERNS
- 424001-05 CURB RAMPS FOR SIDEWALKS
- 442201-03 CLASS C AND D PATCHES
- 602401-02 MANHOLE - TYPE A
- 604001-03 FRAME & LIDS - TYPE 1
- 606001-04 CONCRETE CURB TYPE B AND COMBINATION CONCRETE CURB AND GUTTER
- 701011-02 OFF-RD MOVING OPERATIONS, 2L, 2W, DAY ONLY
- 701311-03 LANE CLOSURE 2L, 2W MOVING OPERATIONS - DAY ONLY
- 701426-03 LANE CLOSURE, MULTILANE, INTERMITTENT OR MOVING OPER., FOR SPEEDS > 45 MPH
- 701501-05 URBAN LANE CLOSURE, 2L, 2W, UNDIVIDED
- 701806-06 URBAN LANE CLOSURE, MULTILANE, 2W WITH MOUNTABLE MEDIAN
- 701701-06 URBAN LANE CLOSURE, MULTILANE, INTERSECTION
- 701801-04 LANE CLOSURE, MULTILANE 1W OR 2W CROSSWALK OR SIDEWALK CLOSURE
- 701901-01 TRAFFIC CONTROL DEVICES
- 780001-02 TYPICAL PAVEMENT MARKINGS
- 888001-01 DETECTOR LOOP INSTALLATIONS
- 888006-01 TYPICAL LAYOUT FOR DETECTION LOOPS

DESIGN DESIGNATION - FAU 2887 (EAST END AVENUE) ADT 5,215 (2030) - COLLECTOR  
PV=4,185 SU=325 MU=140  
100% DESIGN TRAFFIC IN DESIGN LANE  
P=90% S=7% M=3%  
SSS=FAIR

**FAU 2887 (EAST END AVENUE)**

2007 ADT - 4,650  
2030 ADT - 5,215  
POSTED SPEED LIMIT - 30 mph  
DESIGN PERIOD - 20 YEARS  
DESIGN SPEED LIMIT - 30 mph  
STREET CLASSIFICATION - CLASS II

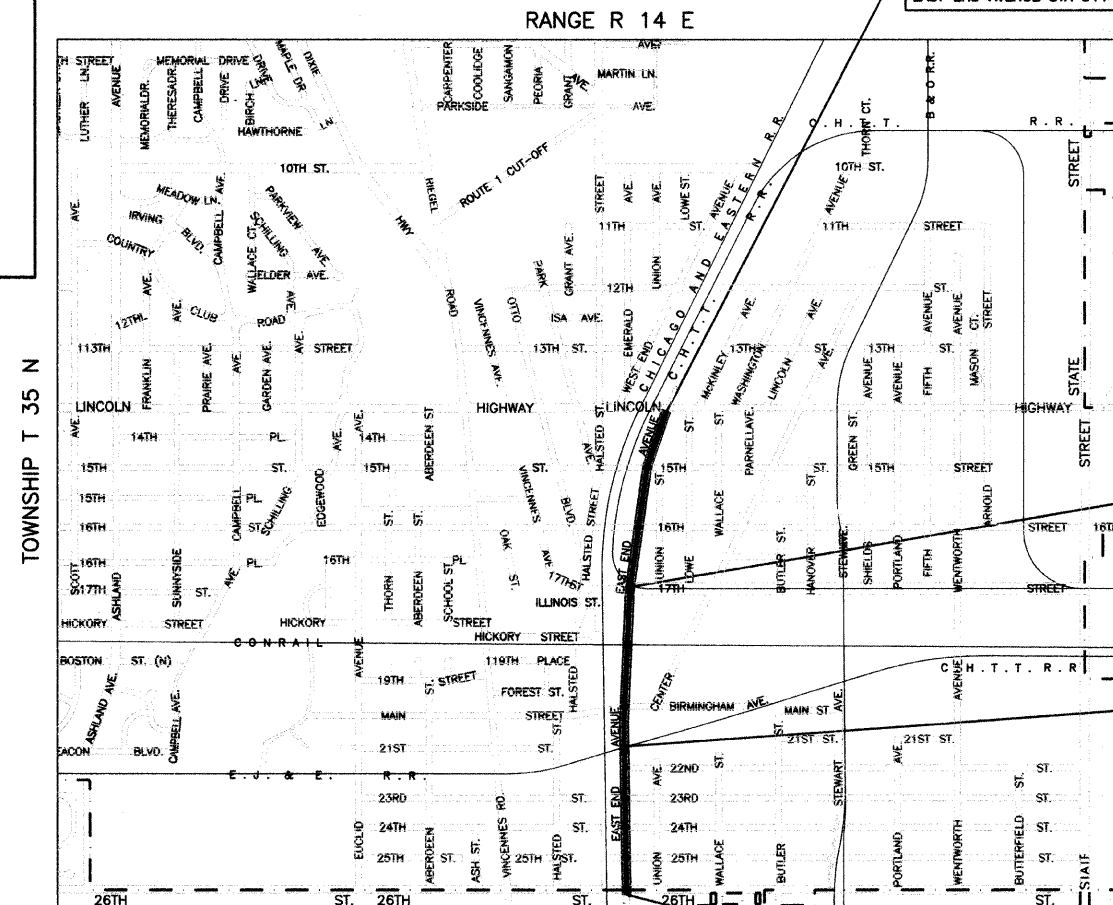
SCALES  
PLAN - 1"=50'  
PROFILE HORIZ. - 1"=50'  
PROFILE VERT. - 1"=8'  
CROSS SECTIONS - 1"=10'



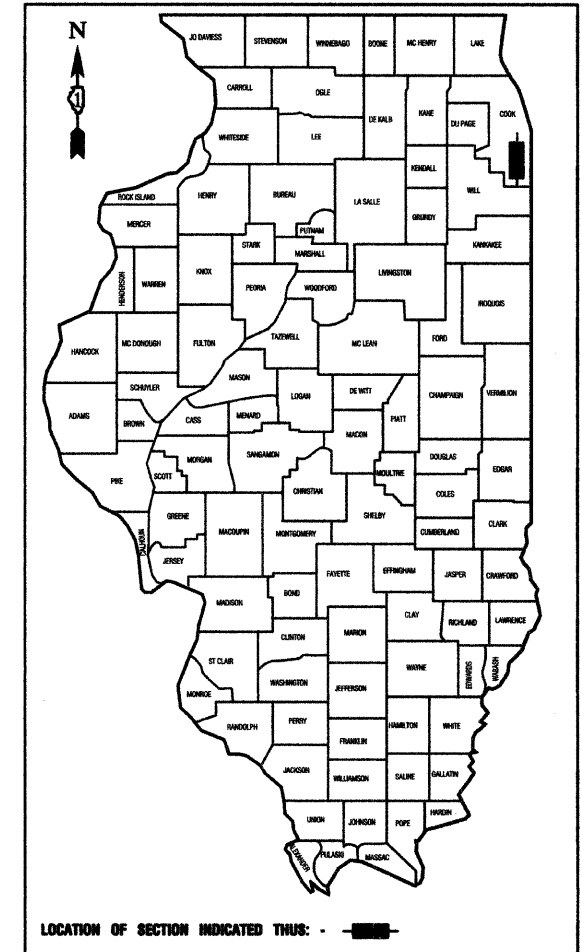
FULL SIZE PLANS HAVE BEEN PREPARED USING STANDARD ENGINEERING SCALES, REDUCED SIZED PLANS WILL NOT CONFORM TO STANDARD SCALES, IN MAKING MEASUREMENTS ON REDUCED PLANS, THE ABOVE SCALES MAY BE USED.

J. U. L. I. E.  
JOINT UTILITY LOCATION INFORMATION FOR EXCAVATION  
1-800-892-0123 or 811

CONTRACT NO. 63314



LOCATION MAP  
GROSS LENGTH=5378 FEET=1.02 MILES  
NET LENGTH=5,242 FEET=0.99 MILES



STATE OF ILLINOIS DEPARTMENT OF TRANSPORTATION  
DIVISION OF HIGHWAYS

Approved: 10/16/09  
Alan Jones  
Mayor, City of Chicago Heights

Passed: OCTOBER 26, 2009  
CHRISTOPHER HOLT  
District 1 Engineer of Local Roads & Streets

Released for Bid Based on Limited Review: OCTOBER 26, 2009  
Diana M. O'Keefe  
Deputy Director of Highways, Region 1 Engineer

PRINTED BY THE AUTHORITY OF  
THE STATE OF ILLINOIS

PREPARED BY OR UNDER THE  
DIRECT SUPERVISION OF:

Josh M. Jurek  
10/16/09



LICENSE EXPIRES: 11/30/11

I.D.O.T. FIELD ENGINEER: MELCHOR MANGOBA (847) 705-4408  
CONSULTANTS: ROBINSON ENGINEERING, LTD. 708-331-6700