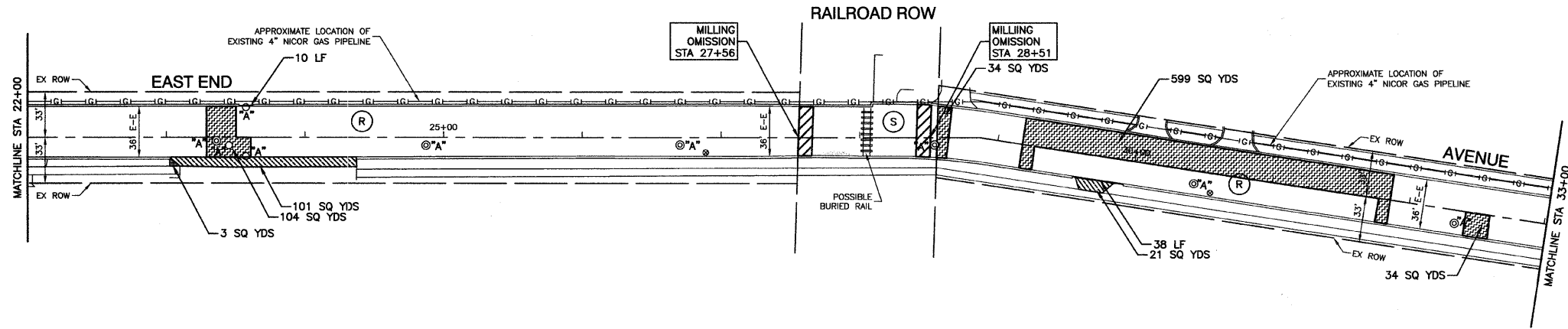


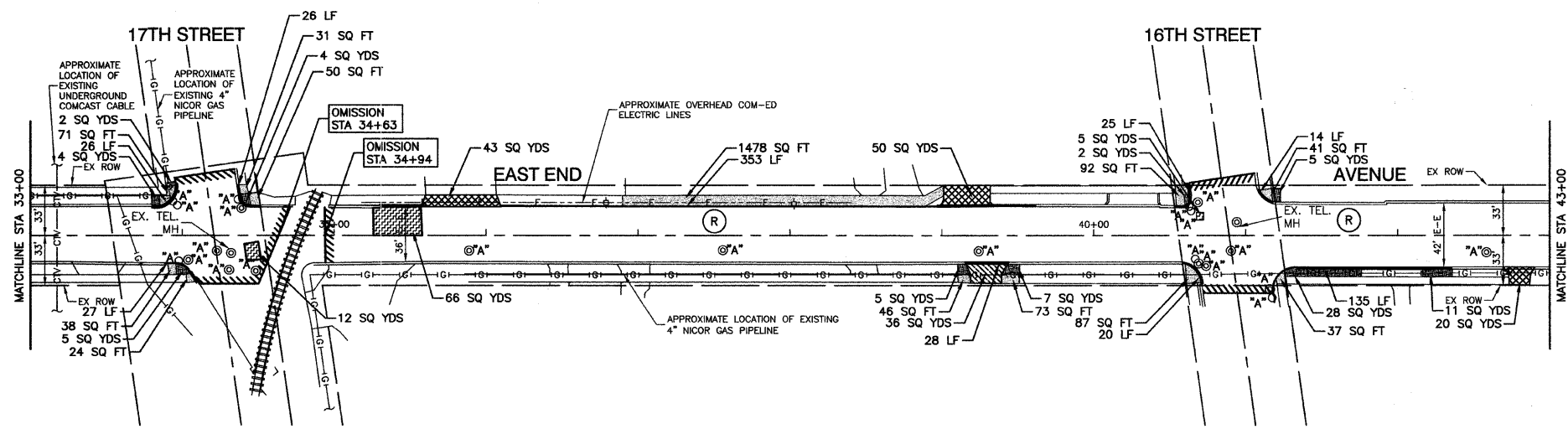
SECTION 28, TOWNSHIP 35, RANGE 14
SECTION 21, TOWNSHIP 35, RANGE 14



DATE	
BY	
REVISION	
PLANNED	
ALIGNED	
CHECKED	
FILED	
NO.	
PLAN	
NOTE BOOK	



DATE	
BY	
REVISION	
PLANNED	
ALIGNED	
CHECKED	
FILED	
NO.	
PROFILE	
NOTE BOOK	



NOTE:
LIMIT OF CONSTRUCTION ON ALL SIDE STREETS IS THE RADIUS RETURN.

- LEGEND**
- PROJECT LIMITS
 - DRIVEWAY PAVEMENT REMOVAL
 - PCC DRIVEWAY PAVEMENT, 7"
 - DRIVEWAY PAVEMENT REMOVAL
 - HOT-MIX ASPHALT BASE COURSE, 8"
 - HOT-MIX ASPHALT SURFACE COURSE, MIX "C", N50
 - HOT-MIX ASPHALT SURFACE REMOVAL - BUTT JOINT (SEE SHEET 12 FOR BUTT JOINT DETAIL)
 - CONCRETE SIDEWALK REMOVAL
 - PCC SIDEWALK, 5"
 - BITUMINOUS SIDEWALK REMOVAL
 - PCC SIDEWALK, 5"
 - CLASS D PATCHES, TYPE I, II, III, IV, 8 INCH PREPARATION OF BASE
 - AGGREGATE BASE REPAIR
 - COMBINATION CONCRETE CURB AND GUTTER REMOVAL AND REPLACEMENT
 - TOPSOIL FURNISH AND PLACE, 4" SODDING, SALT TOLERANT
 - FERTILIZER NUTRIENTS (NITROGEN, PHOSPHORUS, POTASSIUM)
 - HOT-MIX ASPHALT SURFACE COURSE, MIX "D", N50 1 1/2"
 - HOT-MIX ASPHALT SURFACE REMOVAL, 2" POLYMERIZED LEVELING BINDER (MACHINE METHOD), N50 3/4" HOT-MIX ASPHALT SURFACE COURSE, MIX "D", N50 1 1/2"
 - FRAMES AND LIDS TO BE ADJUSTED (SPECIAL)
 - REMOVING MANHOLES
 - MANHOLES, TYPE A, 4'-DIAMETER, TYPE 1 FRAME, CLOSED LID

FILE NAME = 06173_01-PLAN-01 - IDOT P02	USER NAME =	DESIGNED - MPN	REVISED -	STATE OF ILLINOIS DEPARTMENT OF TRANSPORTATION	LOCAL AGENCY PAVEMENT PRESERVATION EAST END AVENUE PAVEMENT PLAN	F.A.U. SECTION COUNTY TOTAL SHEETS SHEET NO.
	CHECKED - JMN	REVISED -	2887 09-00225-00-RS COOK 18 5			
PLOT SCALE = 1"=50'	DRAWN - PS, MJD	REVISED -	CONTRACT NO. 63314			
PLOT DATE = 10-16-09	CHECKED - JMN	REVISED -	FED. ROAD DIST. NO. 1 ILLINOIS FED. AID PROJECT ARA-9003(337)			

SCALE: 1"=50' SHEET NO. 5 OF 18 SHEETS STA. 22+00 TO STA. 43+00