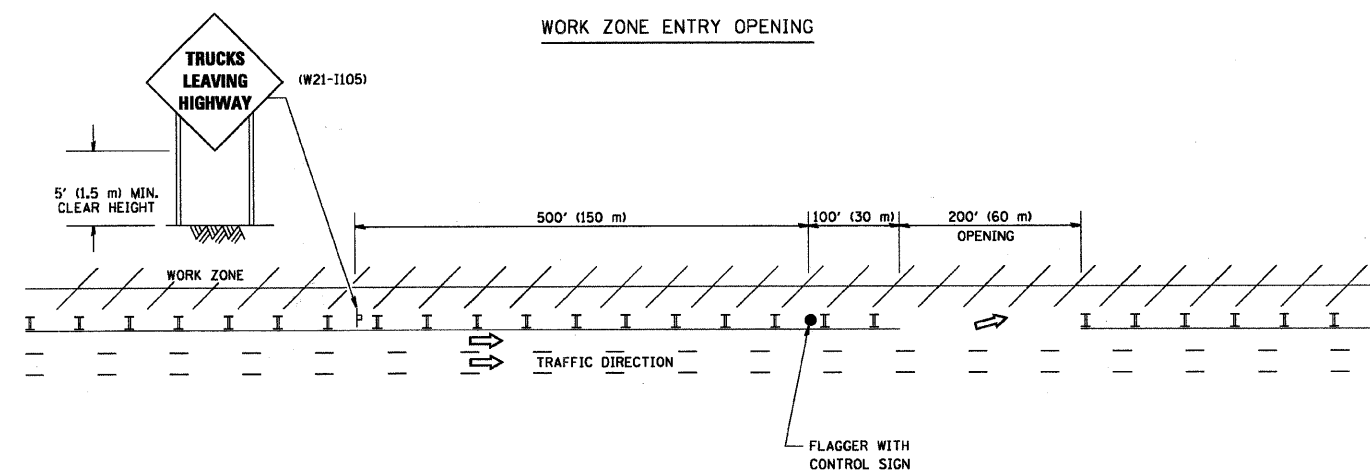
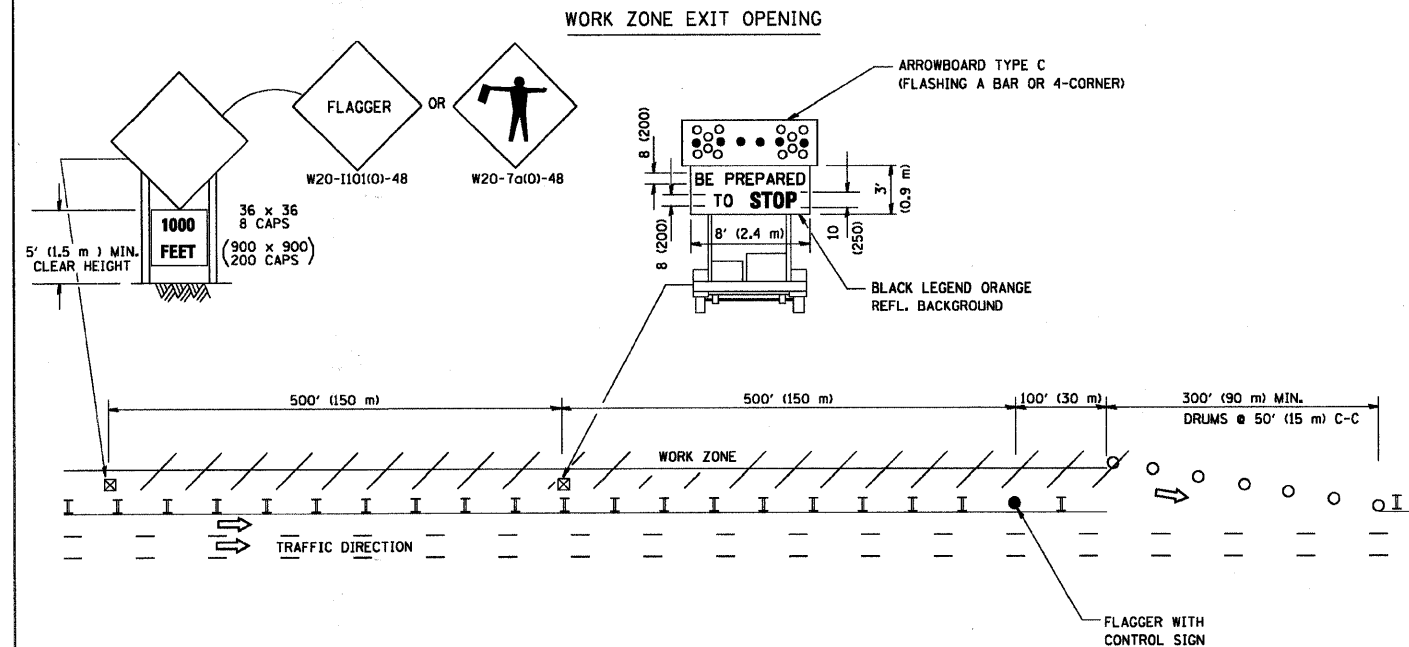


F.A.U. RTE.	SECTION	COUNTY	TOTAL SHEETS	SHEET NO.
09-00034-00-RS		COOK	8	8
STA.	TO STA.			
FED. ROAD DIST. NO	ILLINOIS	FED AID PROJECT ARA-9003(525)		

FAU 1705 173RD STREET  
CONTRACT NO. 63315

### SIGNING FOR FLAGGING OPERATIONS AT WORK ZONE OPENINGS



- NOTES:
1. The Arrowboard, the Flagger Ahead trailer mounted sign, and the Trucks Leaving Highway sign shall be removed or turned away from traffic and the exit and entry openings shall be closed when the flagging operation ceases.
  2. Work Zone Exit Openings should be a minimum of one half mile apart.
  3. Exiting the work zone at any place other than at a Work Zone Exit Opening will be prohibited.
  4. All vehicles shall enter the work zone at entry openings, using their turn signals to warn motorists

ALL DIMENSIONS ARE IN INCHES (MILLIMETERS) UNLESS OTHERWISE SHOWN

COPYRIGHT © 2008 BY BAXTER & WOODMAN, INC.  
 STATE OF ILLINOIS - PROFESSIONAL DESIGN FIRM  
 LICENSE NO. - 84-022-0209  
 486628  
 W:\distatd\22...  
 W:\distatd\22...  
 W:\distatd\22...

FILE NAME - BAXTER	USER NAME = gegljanobt	DESIGNED -	REVISED - D.W.S. 08-98
W:\distatd\22...		DRAWN -	REVISED - J.A.F. 04-03
	PLOT SCALE = 50,000' / IN.	CHECKED -	REVISED - J.A.F. 02-06
	PLOT DATE = 1/4/2008	DATE -	REVISED - S.P.B. 01-07

**STATE OF ILLINOIS  
DEPARTMENT OF TRANSPORTATION**

<b>SIGNING FOR FLAGGING OPERATIONS AT WORK ZONE OPENINGS</b>			
SCALE: NONE	SHEET NO. 1 OF 1 SHEETS	STA.	TO STA.

F.A.U. RTE.	SECTION	COUNTY	TOTAL SHEETS	SHEET NO.
09-00034-00-RS		COOK	8	8
<b>TC-18</b>		<b>CONTRACT NO. 63315</b>		
FED. ROAD DIST. NO. 1	ILLINOIS	FED. AID PROJECT		