

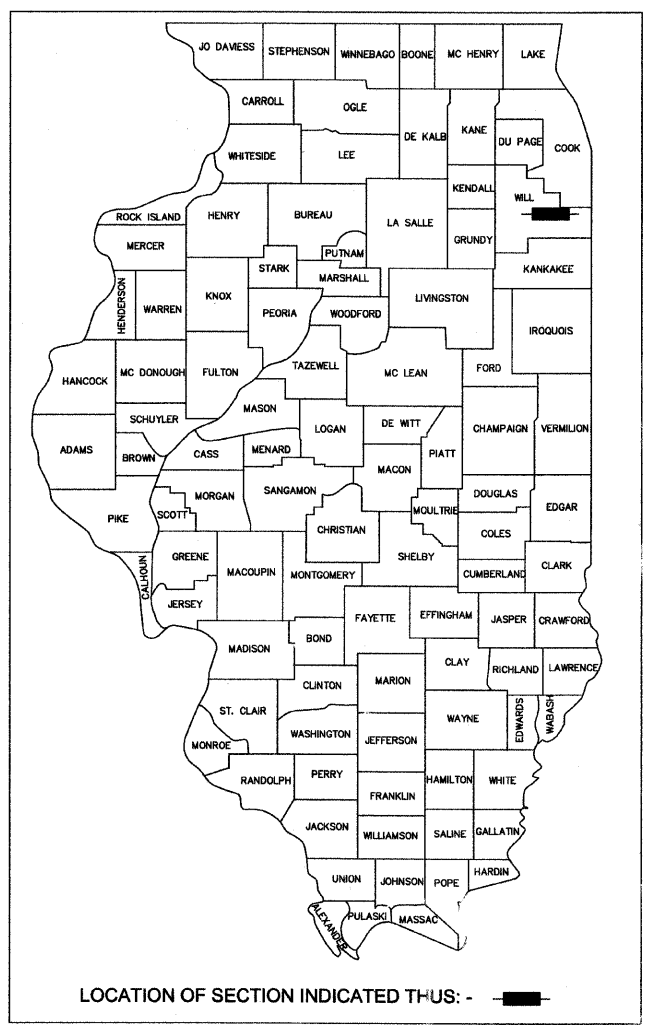
Melchor Mungoba (847)705-4408
11/2/2009 11:26:24 AM CST
M:\2004\04119.4\dwg\04119.806_COVER & DETAILS.dwg

F.A.U. RTE.	SECTION	COUNTY	TOTAL SHEETS	SHEET NO.
1638*	**	WILL	38	1
STA.	TO STA.			
FED. ROAD DIST. NO. -	ILLINOIS	FED. AID PROJECT		
CONTRACT NO. 63316	* EXCHANGE STREET	** 09-00044-01-TL		

STATE OF ILLINOIS
DEPARTMENT OF TRANSPORTATION
DIVISION OF HIGHWAYS

PLANS FOR PROPOSED
FEDERAL AID HIGHWAY

FAU 1638 EXCHANGE STREET
AT INDEPENDENCE BLVD
SURFACE TRANSPORTATION URBAN
INTERSECTION IMPROVEMENT
PROJECT: M-9003 (427)
SECTION: 09-00044-01-TL
JOB NO: C-91-858-09
VILLAGE OF CRETE
WILL COUNTY

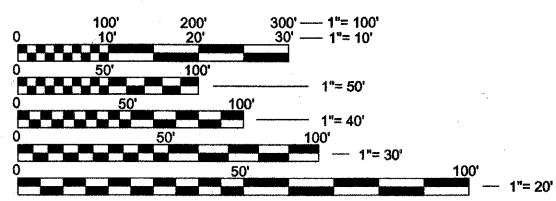


INDEX OF SHEETS

1	INDEX OF SHEETS, STANDARDS
2-3	SUMMARY OF QUANTITIES
4-5	TYPICAL SECTIONS, LEGEND
6	SCHEDULES
7	REFERENCE TIES
8	GENERAL NOTES
9-11	PLAN & PROFILE
12-14	UTILITY PLAN
15	SOIL EROSION AND SEDIMENT CONTROL PLAN
16-23	TRAFFIC SIGNAL PLANS
24	PAVEMENT STRIPING
25 - 31	CROSS SECTIONS - EXCHANGE STREET
32	CROSS SECTIONS - INDEPENDENCE BOULEVARD
33 - 38	CONSTRUCTION DETAILS

STANDARDS

280001-05	TEMPORARY EROSION CONTROL SYSTEMS
424001-05	CURB RAMPS FOR SIDEWALKS
542301-02	PRECAST REINFORCED CONCRETE FLARED END SECTION
602001-01	CATCH BASIN TYPE A
602301-02	INLET TYPE A
604016-02	FRAME AND GRATE TYPE 4
604036-02	GRATE TYPE 8
604061-02	FRAME AND GRATE TYPE 12
604091-02	FRAME AND GRATE TYPE 24
606001-04	CONCRETE CURB TYPE B AND COMBINATION CONCRETE CURB AND GUTTER
606006-02	OUTLETS FOR CONC. CURB AND GUTTER TYPE B-6.24 (B-15.60)
630001-08	STEEL PLATE BEAM GUARDRAIL
630301-05	SHOULDER WIDENING FOR TYPE 1 (SPECIAL) GUARDRAIL TERMINALS
701001-02	OFF-RD OPERATIONS, 2L, 2W, 15' MIN FROM PAVEMENT EDGE
701006-03	OFF-RD OPERATIONS, 2L, 2W, 15' (4.5 m) TO 24' (600 mm) FROM PAVEMENT EDGE
701301-03	LANE CLOSURE, 2L, 2W, SHORT TIME OPERATIONS
701501-05	URBAN LANE CLOSURE, 2L, 2W, UNDIVIDED
701502-03	URBAN LANE CLOSURE, 2L, 2W, WITH BIDIRECTIONAL LEFT TURN LANE
701701-06	URBAN LANE CLOSURE, MULTI LANE INTERSECTION
701801-04	LANE CLOSURE, MULTI LANE 1W OR 2W CROSSWALK OR SIDEWALK CLOSURE
701901-01	TRAFFIC CONTROL DEVICES
720001-01	SIGN PANEL MOUNT DETAILS
720006-02	SIGN PANEL ERECTION DETAILS
720011-01	METAL POSTS FOR SIGNS, MARKERS & DELINEATORS
720021-02	SIGN PANELS - EXTRUDED ALUMINUM TYPE
729001-01	APPLICATION OF TYPES A & B POSTS
805001-01	ELECTRIC SERVICE INSTALLATION DETAILS
814001-02	HANDHOLES
814006-02	DOUBLE HANDHOLES
857001-01	STANDARD PHASE DESIGNATION DIAGRAMS & PHASE SEQUENCE
878001-08	CONCRETE FOUNDATION DETAILS
880006-01	TRAFFIC SIGNAL MOUNT DETAILS - POST & BRACKET MOUNT
886001-01	DETECTOR LOOP INSTALLATION
886006-01	TYPICAL LAYOUTS FOR DETECTION LOOPS

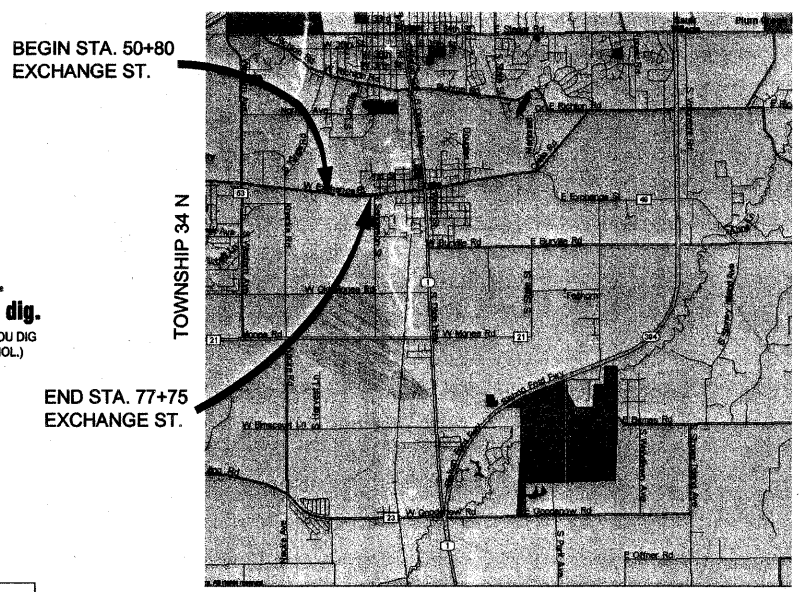


FULL SIZE PLANS HAVE BEEN PREPARED USING STANDARD ENGINEERING SCALES. REDUCED SIZED PLANS WILL NOT CONFORM TO STANDARD SCALES. IN MAKING MEASUREMENTS ON REDUCED PLANS, THE ABOVE SCALES MAY BE USED.

BENCHMARK
WILL COUNTY CONTROL MONUMENT,
STATION NAME 1518:
NGS 3-D MARKER CONSISTING OF 9/16"
DIA. STAINLESS STEEL ROD INSIDE
GREASE FILLED 1" DIA PVC, DRIVEN
TO A REFUSAL DEPTH OF 8 FEET
ENCLOSED IN SAND AND 6" PVC PIPE
WITH ALUMINUM ACCESS COVER.
ELEV=751.009

LOCAL BENCHMARK
STA. 52+78.7, 39.4' RT.
5/8" IRON ROD
ELEV = 722.11

CONTRACT NO. 63316



LOCATION MAP
NOT TO SCALE

GROSS LENGTH = 2,695 FT. = 0.510 MILE
NET LENGTH = 2,695 FT. = 0.510 MILE

EXCHANGE STREET COLLECTOR
ADT = 7,980 (2010)
DESIGN SPEED = 40 MPH
SPEED LIMIT = 35 MPH

REVISIONS			
NO.	NAME	SHEETS	DATE
1	PER IDOT	ALL SHEETS	8-13-09
2	PER IDOT	ALL SHEETS	10-29-09

REVISIONS		
NO.	NAME	DATE
1	PER IDOT	8-13-09
2	PER IDOT	10-29-09

MC BRIDE ENGINEERING, INC.
CIVIL ENGINEERS & SURVEYORS
ILLINOIS PROFESSIONAL DESIGN FIRM #184-000803
CORPORATE: 3649 W. 183rd Street Suite 124
Hazel Crest, IL 60429-2409
708-799-1350
ARLINGTON HEIGHTS DIVISION
320 S. Belmont Avenue
Arlington Heights, IL 60005-2038
847-394-4810
MEI PROJECT: 04119.806 SCALE: NONE

STATE OF ILLINOIS
DEPARTMENT OF TRANSPORTATION DIVISION OF HIGHWAYS

APPROVED 11-02-09
Michael R. ...
LOCAL AGENCY POSITION

PASSED NOVEMBER 03, 2009
C. ...
DISTRICT 1 ENGINEER OF LOCAL ROADS & STREETS

RELEASING FOR BID
BASED ON LIMITED
REVIEW
NOVEMBER 3, 2009
Diana M. O'Keefe
DEPUTY DIRECTOR OF HIGHWAYS, REGION 1 ENGINEER

PRINTED BY THE AUTHORITY
OF THE STATE OF ILLINOIS

VILLAGE OF CRETE
EXCHANGE STREET IMPROVEMENTS
CRETE, WILL COUNTY, ILLINOIS

COVER SHEET

DATE: 7-3-09
DRAWN BY: PG/ADM
CHECKED BY: LGB