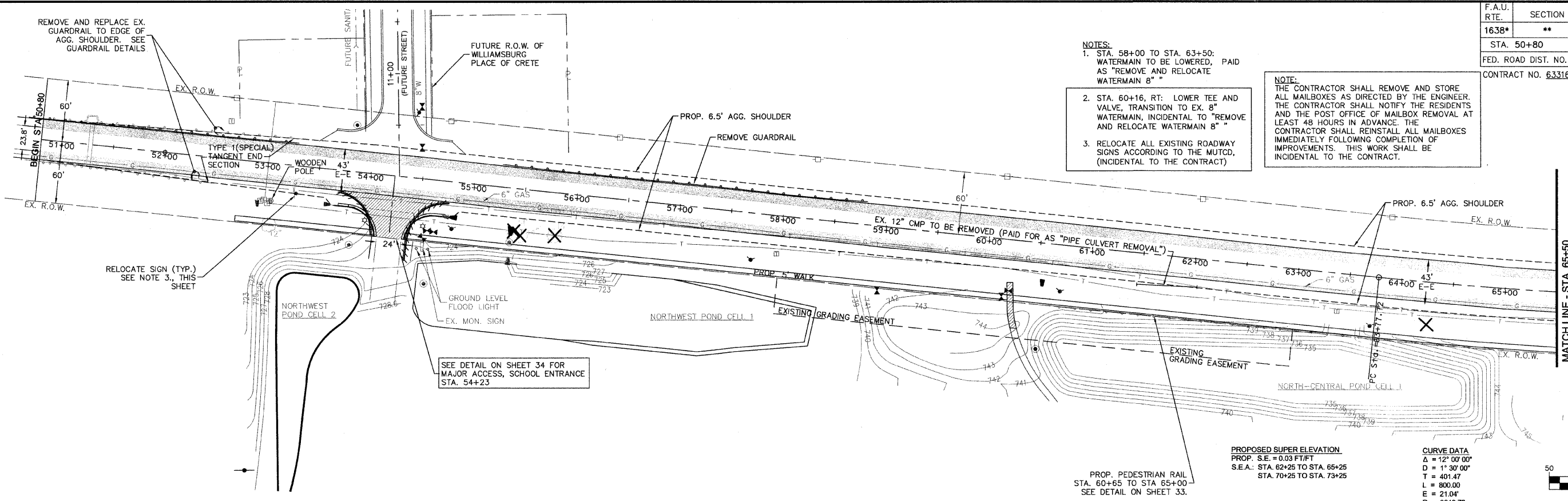


F.A.U. RTE.	SECTION	COUNTY	TOTAL SHEETS	SHEET NO.
1638*	**	WILL	38	9
STA. 50+80		TO STA. 65+50		
FED. ROAD DIST. NO. _		ILLINOIS	FED. AID PROJECT	
CONTRACT NO. 63316		* EXCHANGE STREET ** 09-00044-01-TL		

- NOTES:**
- STA. 58+00 TO STA. 63+50: WATERMAIN TO BE LOWERED, PAID AS "REMOVE AND RELOCATE WATERMAIN 8"
 - STA. 60+16, RT: LOWER TEE AND VALVE, TRANSITION TO EX. 8" WATERMAIN, INCIDENTAL TO "REMOVE AND RELOCATE WATERMAIN 8"
 - RELOCATE ALL EXISTING ROADWAY SIGNS ACCORDING TO THE MUTCD, (INCIDENTAL TO THE CONTRACT)

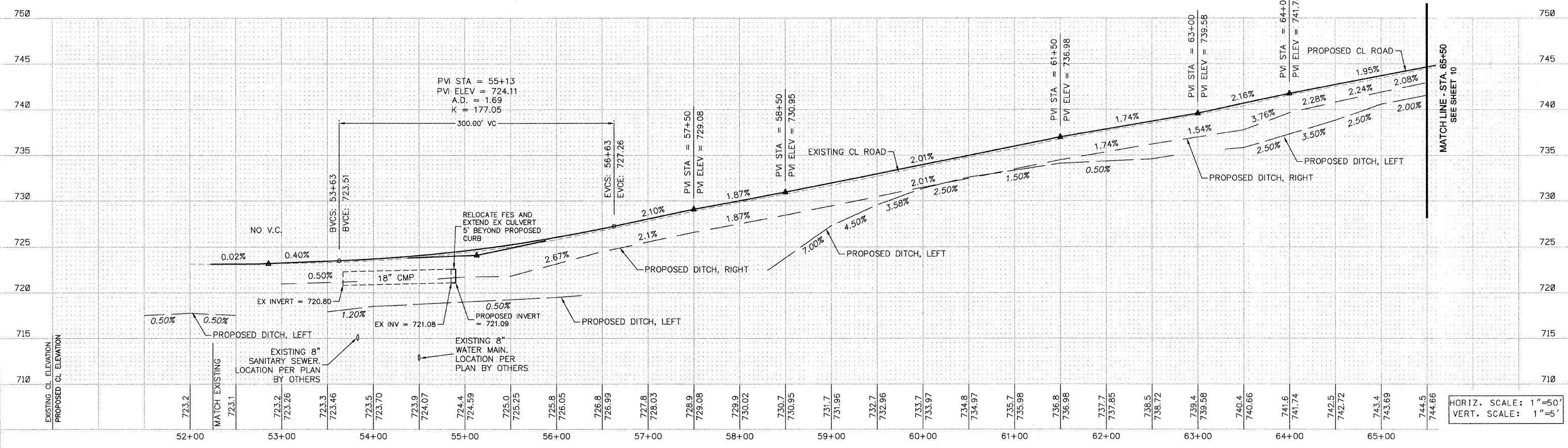
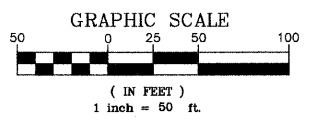
NOTE:
THE CONTRACTOR SHALL REMOVE AND STORE ALL MAILBOXES AS DIRECTED BY THE ENGINEER. THE CONTRACTOR SHALL NOTIFY THE RESIDENTS AND THE POST OFFICE OF MAILBOX REMOVAL AT LEAST 48 HOURS IN ADVANCE. THE CONTRACTOR SHALL REINSTALL ALL MAILBOXES IMMEDIATELY FOLLOWING COMPLETION OF IMPROVEMENTS. THIS WORK SHALL BE INCIDENTAL TO THE CONTRACT.

NOTE:
EXISTING UTILITY DATA SHOWN IS PER CURRENT ATLAS DOCUMENTATION. FIELD VERIFICATION IS REQUIRED TO DETERMINE EXTENT OF RELOCATION



PROPOSED SUPER ELEVATION
PROP. S.E. = 0.03 FT/FT
S.E.A.: STA. 62+25 TO STA. 66+25
STA. 70+25 TO STA. 73+25

CURVE DATA
Δ = 12° 00' 00"
D = 1° 30' 00"
T = 401.47
L = 800.00
E = 21.04'
R = 3819.72



HORIZ. SCALE: 1"=50'
VERT. SCALE: 1"=5'

REVISIONS		
NO.	NAME	DATE
1	PER IDOT	8-13-09
2	PER IDOT	10-29-09

McBRIDE ENGINEERING, INC.
CIVIL ENGINEERS & SURVEYORS
ILLINOIS PROFESSIONAL DESIGN FIRM #184-000803

CORPORATE: 3649 W. 183rd Street Suite 124
Hazel Crest, IL 60429-2409
708-799-1330

ARLINGTON HEIGHTS DIVISION: 320 S. Belmont Avenue
Arlington Heights, IL 60005-2038
847-394-4810

MEI PROJECT: 04119.806 SCALE: 1"=50'

VILLAGE OF CRETE
EXCHANGE STREET IMPROVEMENTS
CRETE, WILL COUNTY, ILLINOIS

PLAN & PROFILE - EXCHANGE STREET

DATE: 7-3-09

DRAWN BY: PG/ADM
CHECKED BY: LGB

M: 2009\04119.806\dwg\04119.806_PROFILES.dwg 10/29/2009 12:54:40 PM CDT