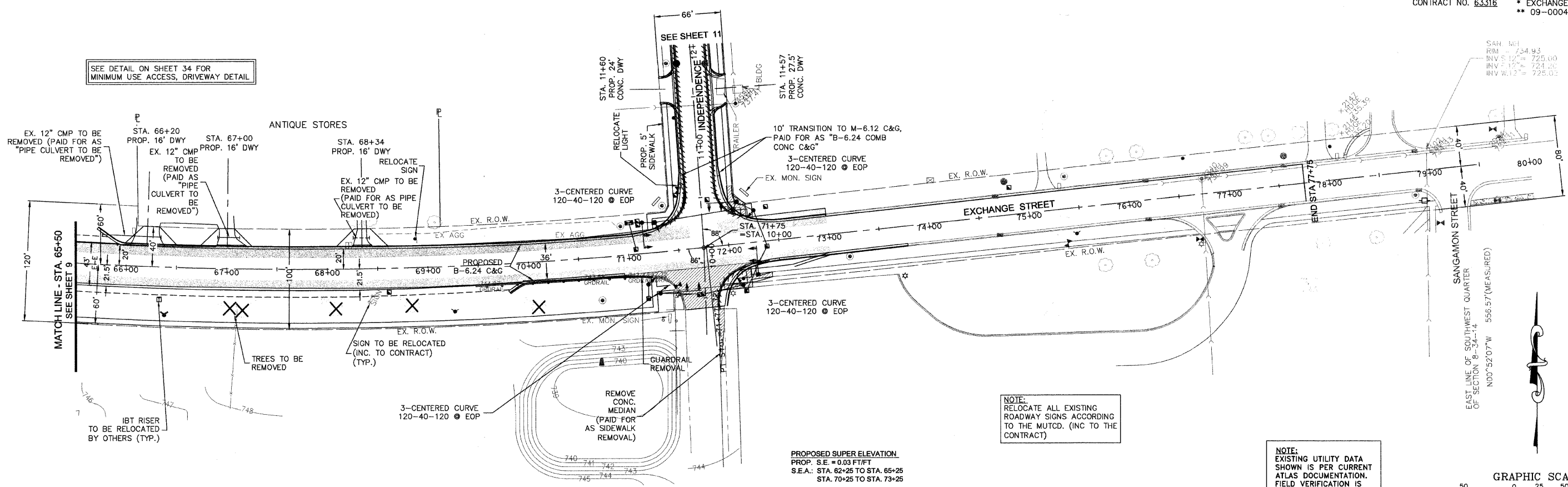


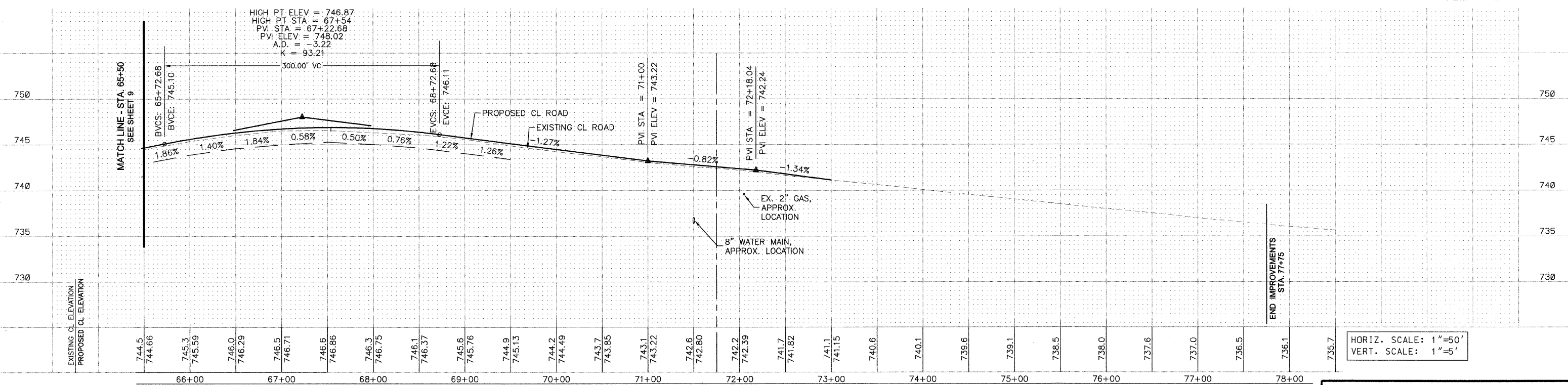
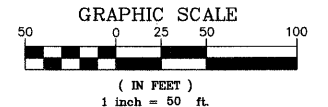
F.A.U. RTE.	SECTION	COUNTY	TOTAL SHEETS	SHEET NO.
1638*	**	WILL	38	10
STA. 65+50		TO STA. 77+75		
FED. ROAD DIST. NO. _		ILLINOIS	FED. AID PROJECT	
CONTRACT NO. 63316		* EXCHANGE STREET ** 09-00044-01-TL		



PROPOSED SUPER ELEVATION
 PROP. S.E. = 0.03 FT/FT
 S.E.A.: STA. 62+25 TO STA. 65+25
 STA. 70+25 TO STA. 73+25

NOTE:
 RELOCATE ALL EXISTING ROADWAY SIGNS ACCORDING TO THE MUTCD. (INC TO THE CONTRACT)

NOTE:
 EXISTING UTILITY DATA SHOWN IS PER CURRENT ATLAS DOCUMENTATION. FIELD VERIFICATION IS REQUIRED TO DETERMINE EXTENT OF RELOCATION



HORIZ. SCALE: 1"=50'
 VERT. SCALE: 1"=5'

REVISIONS		
NO.	NAME	DATE
1	PER IDOT	8-13-09
2	PER IDOT	10-29-09

McBRIDE ENGINEERING, INC.
 CIVIL ENGINEERS & SURVEYORS
 ILLINOIS PROFESSIONAL DESIGN FIRM #184-000803
 CORPORATE: 3649 W. 183rd Street Suite 124, Hazel Crest, IL 60429-2409, 708-799-1350
 ARLINGTON HEIGHTS DIVISION: 320 S. Belmont Avenue, Arlington Heights, IL 60005-2038, 847-394-4810

VILLAGE OF CRETE
 EXCHANGE STREET IMPROVEMENTS
 CRETE, WILL COUNTY, ILLINOIS
 PLAN & PROFILE - EXCHANGE STREET
 DATE: 7-3-09
 DRAWN BY: PG/ADM
 CHECKED BY: LGB

M:\2004\04119.4\dwg\04119.806_PROFILES.dwg 10/29/2009 1:25:30 PM CDT