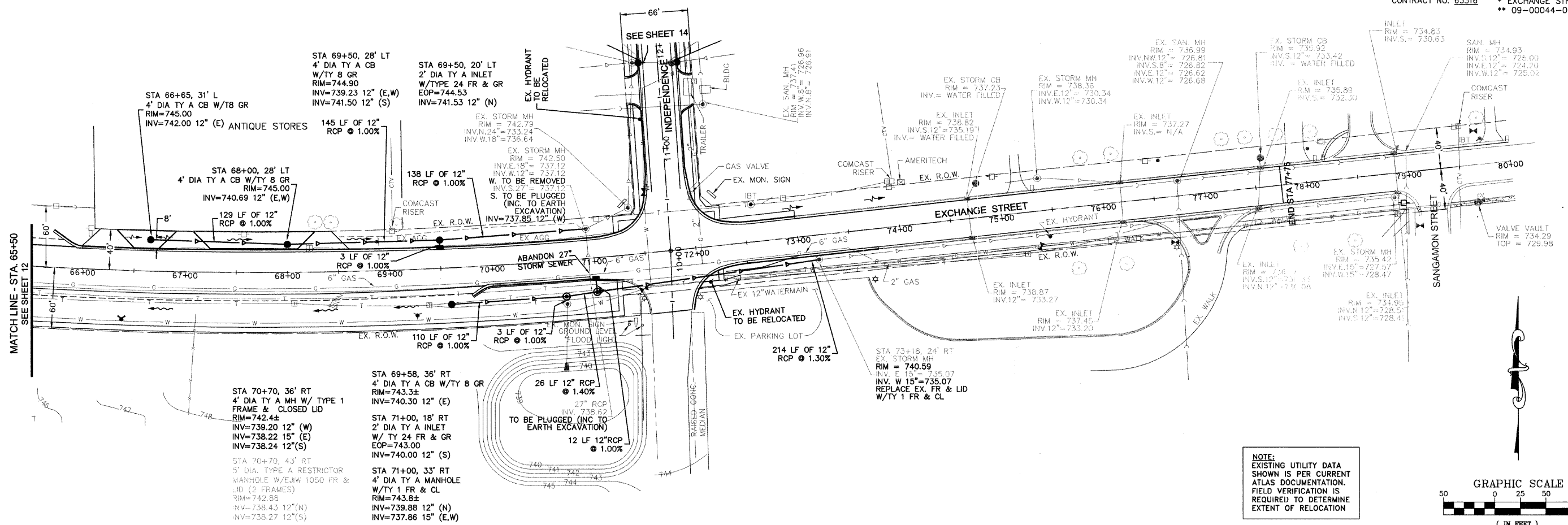


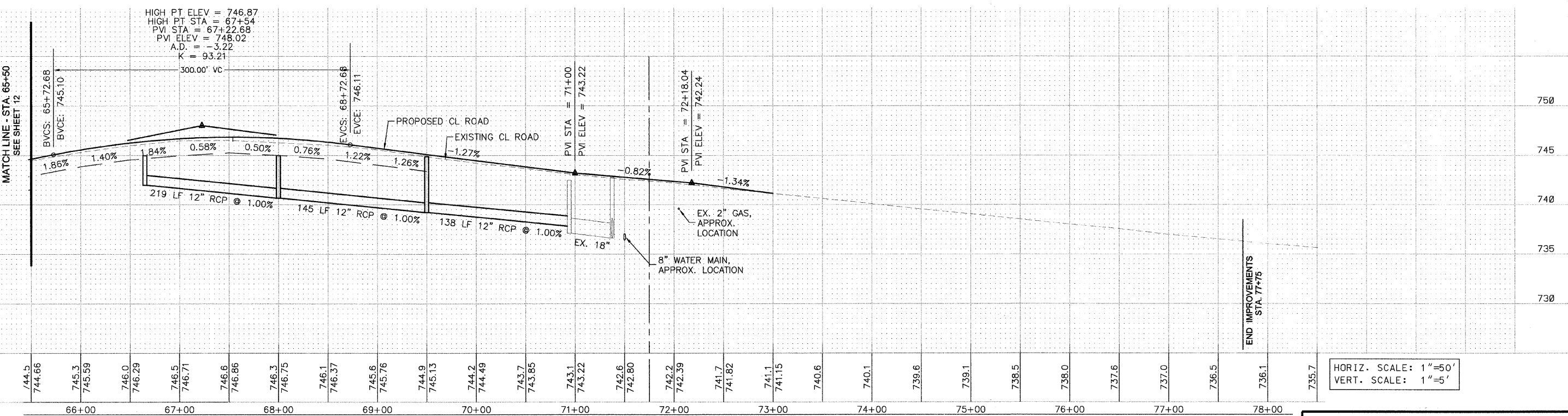
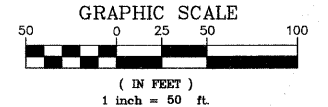
F.A.U. RTE.	SECTION	COUNTY	TOTAL SHEETS	SHEET NO.
1638*	**	WILL	38	13

STA. 65+50 TO STA. 77+75
 FED. ROAD DIST. NO. ILLINOIS FED. AID PROJECT

CONTRACT NO. 63316 * EXCHANGE STREET
 ** 09-00044-01-TL



NOTE:
 EXISTING UTILITY DATA SHOWN IS PER CURRENT ATLAS DOCUMENTATION. FIELD VERIFICATION IS REQUIRED TO DETERMINE EXTENT OF RELOCATION



HORIZ. SCALE: 1"=50'
 VERT. SCALE: 1"=5'

REVISIONS		
NO.	NAME	DATE
1	PER IDOT	8-13-09
2	PER IDOT	10-29-09

McBRIDE ENGINEERING, INC.
 CIVIL ENGINEERS & SURVEYORS
 ILLINOIS PROFESSIONAL DESIGN FIRM #184-000803
 CORPORATE: 3649 W. 183rd Street Suite 124, Hazel Crest, IL 60429-2409, 708-799-1390
 ARLINGTON HEIGHTS DIVISION: 320 S. Belmont Avenue, Arlington Heights, IL 60005-2038, 847-394-4810

VILLAGE OF CRETE
 EXCHANGE STREET IMPROVEMENTS
 CRETE, WILL COUNTY, ILLINOIS
 UTILITY PLAN - EXCHANGE STREET
 MEI PROJECT: 04119.806 SCALE: 1"=50' DATE: 7-3-09
 DRAWN BY: PG/ADM
 CHECKED BY: LGB

M:\2004\04119.806\DWG\04119.806_PROFILES.dwg 10/29/2009 1:00:16 PM COT