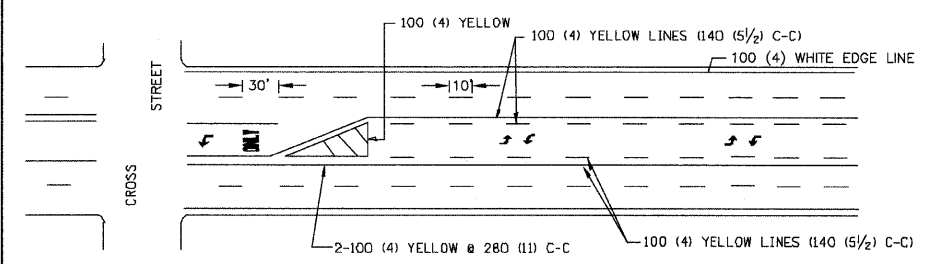


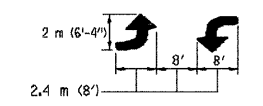
FOR MEDIAN LENGTHS WHERE DIAGONAL SPACING CANNOT BE ATTAINED, USE 5 (FIVE) EQUALLY SPACED DIAGONAL LINES.

DIAGONAL LINE SPACING: 15 m (50') C-C (LESS THAN 50 km/h (30 MPH))
25 m (75') C-C (50 km/h (30 MPH) TO 70 km/h (45 MPH))
45 m (150') C-C (MORE THAN 70 km/h (45 MPH))

MEDIANS OVER 1.2 m (4') WIDE

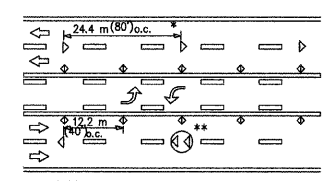


A MINIMUM OF TWO PAIRS OF TURN ARROWS SHALL BE USED, WHITE IN COLOR. ADDITIONAL PAIRS SHALL BE PLACED AT 60 m (200') TO 90 m (300') INTERVALS.

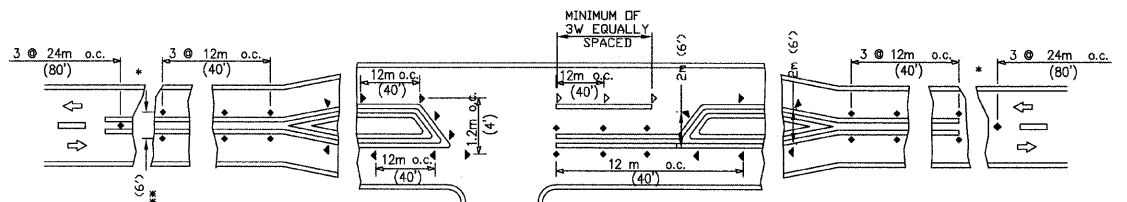


MEDIAN WITH TWO-WAY LEFT TURN LANE

TYPICAL PAINTED MEDIAN MARKING

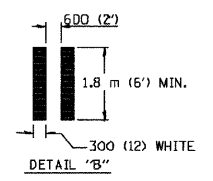
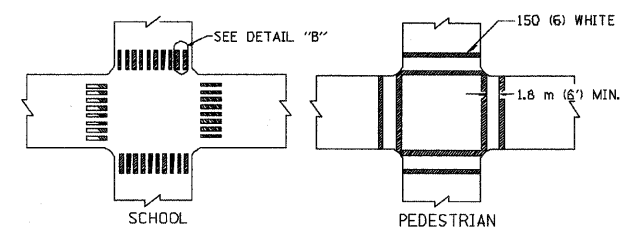


TWO-WAY LEFT TURN

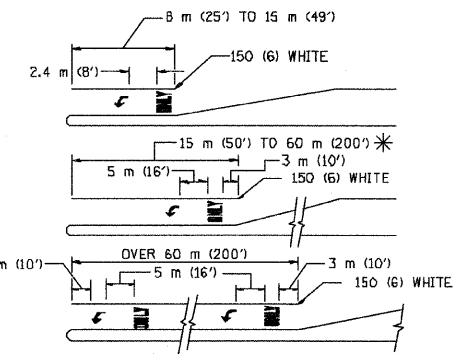


LEFT TURN

* SEE TWO-LANE/TWO-WAY WHERE MARKERS CONTINUE
** WHERE THE MEDIAN WIDTH IS 2m (6') OR LESS USE TWO-WAY MARKERS.



TYPICAL CROSSWALK MARKING



FULL SIZE LETTERS 2.4 m (8') AND ARROWS SHALL BE USED.
* AREA = 1.5 m² (15.6 SQ. FT.) ** ONLY AREA = 1.9 m² (20.8 SQ. FT.)

* TURN LANES IN EXCESS OF 120 m (400') IN LENGTH MAY HAVE AN ADDITIONAL SET OF ARROW - "ONLY" INSTALLED MIDWAY BETWEEN THE OTHER TWO SETS OF ARROW - "ONLY".

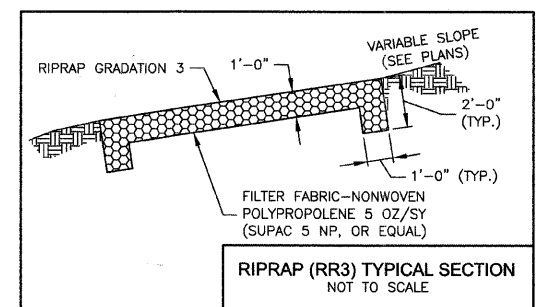
TYPICAL LEFT (OR RIGHT) TURN LANE

TYPICAL TURN LANE MARKING

SYMBOLS

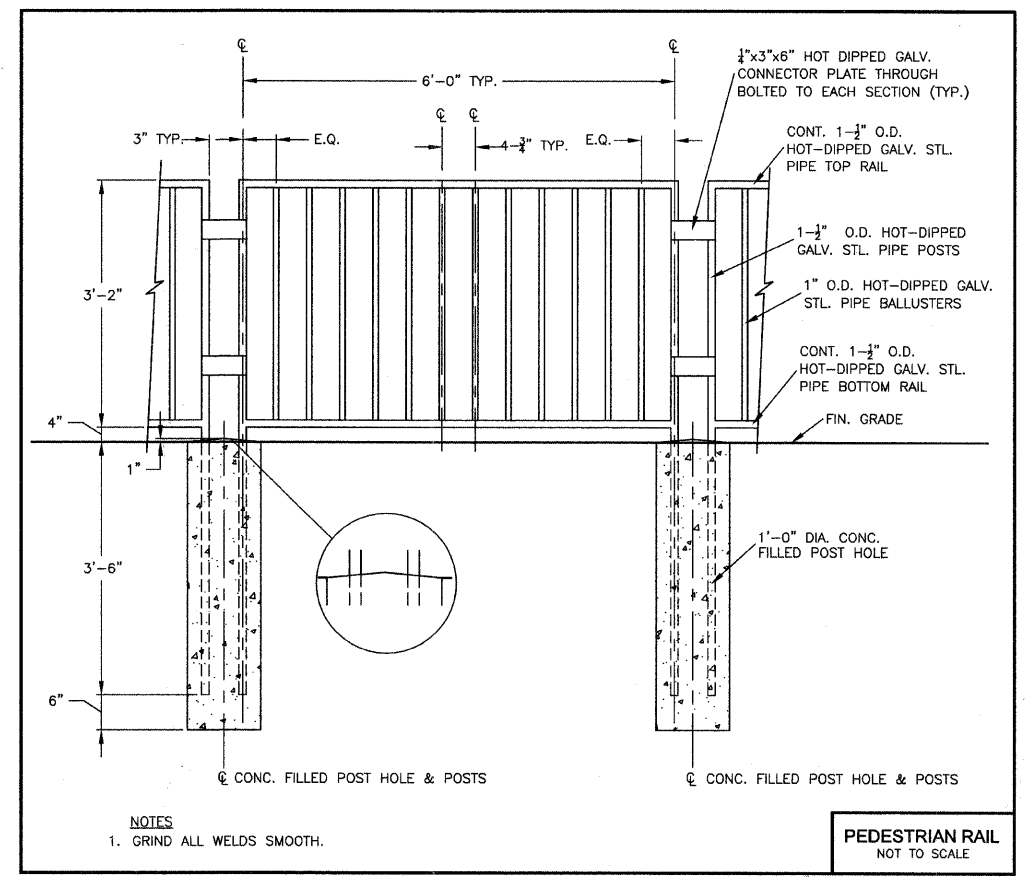
- ▬ Yellow stripe
- ▬ White stripe
- ▷ One-way amber marker
- ▷ One-way crystal marker
- ◆ Two-way amber marker

DISTRICT ONE
TYPICAL PAVEMENT MARKINGS
NOT TO SCALE



RIPRAP (RR3) TYPICAL SECTION
NOT TO SCALE

TEMPORARY SEEDING SPECIES, RATES AND DATES			
SPECIES	Lbs per Lbs/AC	1000 sq. ft.	SEEDING DATES
DATS	90 Lbs.	2 Lbs.	EARLY SPRING - JULY 1
CEREAL RYE	90 Lbs.	2 Lbs.	EARLY SPRING - SEPT. 30
WHEAT	90 Lbs.	2 Lbs.	EARLY SPRING - SEPT. 30
PERENNIAL RYEGRASS	25 Lbs.	6 Lbs.	EARLY SPRING - SEPT. 30



NOTES
1. GRIND ALL WELDS SMOOTH.

PEDESTRIAN RAIL
NOT TO SCALE

REVISIONS		
NO.	NAME	DATE
1	PER IDOT	8-13-09
2	PER IDOT	10-29-09

M^C BRIDE ENGINEERING, INC.
CIVIL ENGINEERS & SURVEYORS
ILLINOIS PROFESSIONAL DESIGN FIRM #194-000803

COBORATE
3649 W. 183rd Street Suite 124
Hazel Crest, IL 60429-2409
708-799-1350

ARLINGTON HEIGHTS DIVISION
320 S. Belmont Avenue
Arlington Heights, IL 60005-2038
847-394-4810

MEI PROJECT: 04119.806 SCALE: NONE

VILLAGE OF CRETE
EXCHANGE STREET IMPROVEMENTS
CRETE, WILL COUNTY, ILLINOIS

CONSTRUCTION DETAILS

DATE: 7-3-09
DRAWN BY: PG/ADM
CHECKED BY: LGB