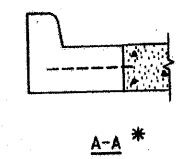
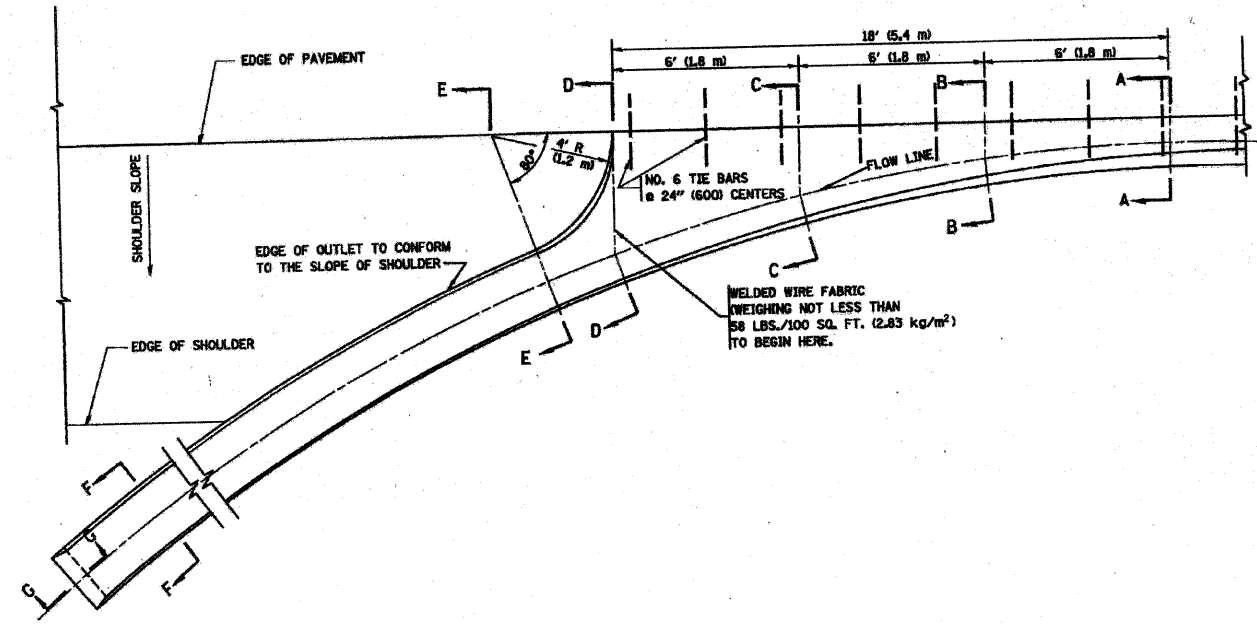
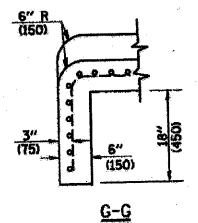
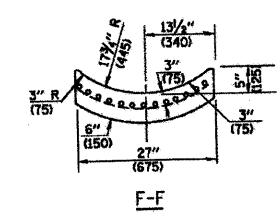
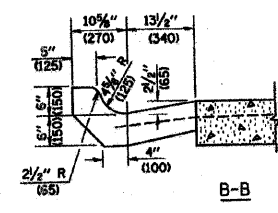
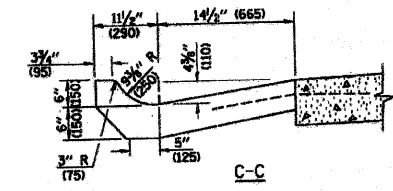
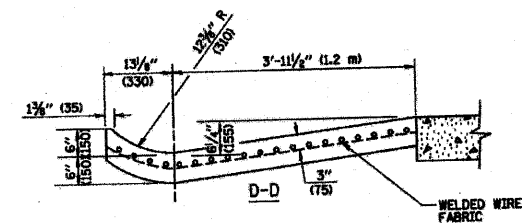
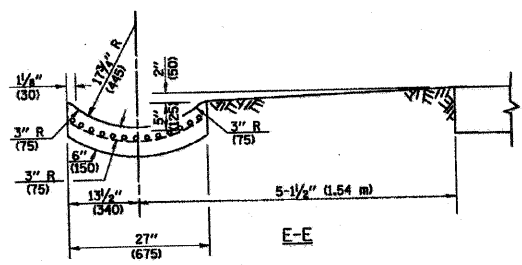


F.A.U. R.T.E.	SECTION	COUNTY	TOTAL SHEETS	SHEET NO.
1638*	**	WILL	38	37
STA.	TO STA.			
FED. ROAD DIST. NO.	ILLINOIS	FED. AID PROJECT		
CONTRACT NO. 63316	* EXCHANGE STREET		** 09-00044-01-TL	



* DIMENSIONS OF THE CURB & GUTTER AT SECTION A-A ARE SHOWN ON STATE STANDARD 60600L FOR DETAILS OF OUTLET FOR CONCRETE CURB & GUTTER, TYPE B-6.24 (B-15.60) SEE STATE STANDARD 606006.



GENERAL NOTES

GUTTER OUTLET SHALL BE TIED TO THE PAVEMENT IN ACCORDANCE WITH DETAILS FOR LONGITUDINAL CONSTRUCTION JOINT SHOWN ON STANDARD 42000L.

TIE BARS SHALL BE NO. 20 (NO.6) AT 24" (600) CENTERS UNLESS OTHERWISE SHOWN.

IF THE AVERAGE GRADE OF PAVEMENT FOR THE DISTANCE FROM SECTION A-A TO D-D EXCEEDS 2%, THIS DISTANCE SHALL BE INCREASED 6' (1.8 m) FOR EACH 1% INCREASE IN GRADE.

QUANTITIES

FOR SECTION A-A TO E-E AND CURTAIN WALL = 1.25 CU. YDS. (0.96 m³) CLASS SI CONCRETE (OUTLET) FOR 9" (225) PAV'T.
 1.27 CU. YDS. (0.96 m³) CLASS SI CONCRETE (OUTLET) FOR 10" (250) PAV'T.
 FOR SECTION F-F = 0.045 CU. YDS. (0.03 m³) CLASS SI CONCRETE PER FT. (M).

ALL DIMENSIONS ARE IN INCHES (MILLIMETERS) UNLESS OTHERWISE SHOWN.

FILE NAME = W:\data\122x34\bd83.dgn	USER NAME = gajlanobt	DESIGNED - M. DE YONG	REVISED - R. SHAH 09-09-94
		DRAWN -	REVISED - R. SHAH 10-25-94
		CHECKED -	REVISED - E. GOMEZ 12-21-00
		DATE - 08-04-86	REVISED -

**STATE OF ILLINOIS
DEPARTMENT OF TRANSPORTATION**

SCALE: NONE		SHEET NO. 1 OF 1 SHEETS		STA. TO STA.	
F.A. R.T.E.	SECTION	COUNTY	TOTAL SHEETS	SHEET NO.	
	BD80-01 (BD-03)				
FED. ROAD DIST. NO. 1 (ILLINOIS) FED. AID PROJECT			CONTRACT NO.		

REVISIONS		
NO.	NAME	DATE
1	PER IDOT	8-13-09
2	PER IDOT	10-29-09

McBRIDE ENGINEERING, INC.
 CIVIL ENGINEERS & SURVEYORS
 ILLINOIS PROFESSIONAL DESIGN FIRM #184-000803

CORPORATE: 3649 W. 183rd Street Suite 124, Hazel Crest, IL 60429-2409, 708-799-1380

ARLINGTON HEIGHTS DIVISION: 320 S. Belmont Avenue, Arlington Heights, IL 60005-2038, 847-394-4810

MEI PROJECT: 04119.806 SCALE: NONE

VILLAGE OF CRETE
 EXCHANGE STREET IMPROVEMENTS
 CRETE, WILL COUNTY, ILLINOIS

CONSTRUCTION DETAILS

DATE: 7-3-09

DRAWN BY: PG/ADM
 CHECKED BY: LGB

M:\2004\04119.4.dwg 04119.806 COVER & DETAILS.dwg 10/29/2009 11:19:35 AM CDT