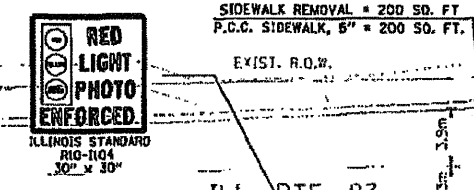
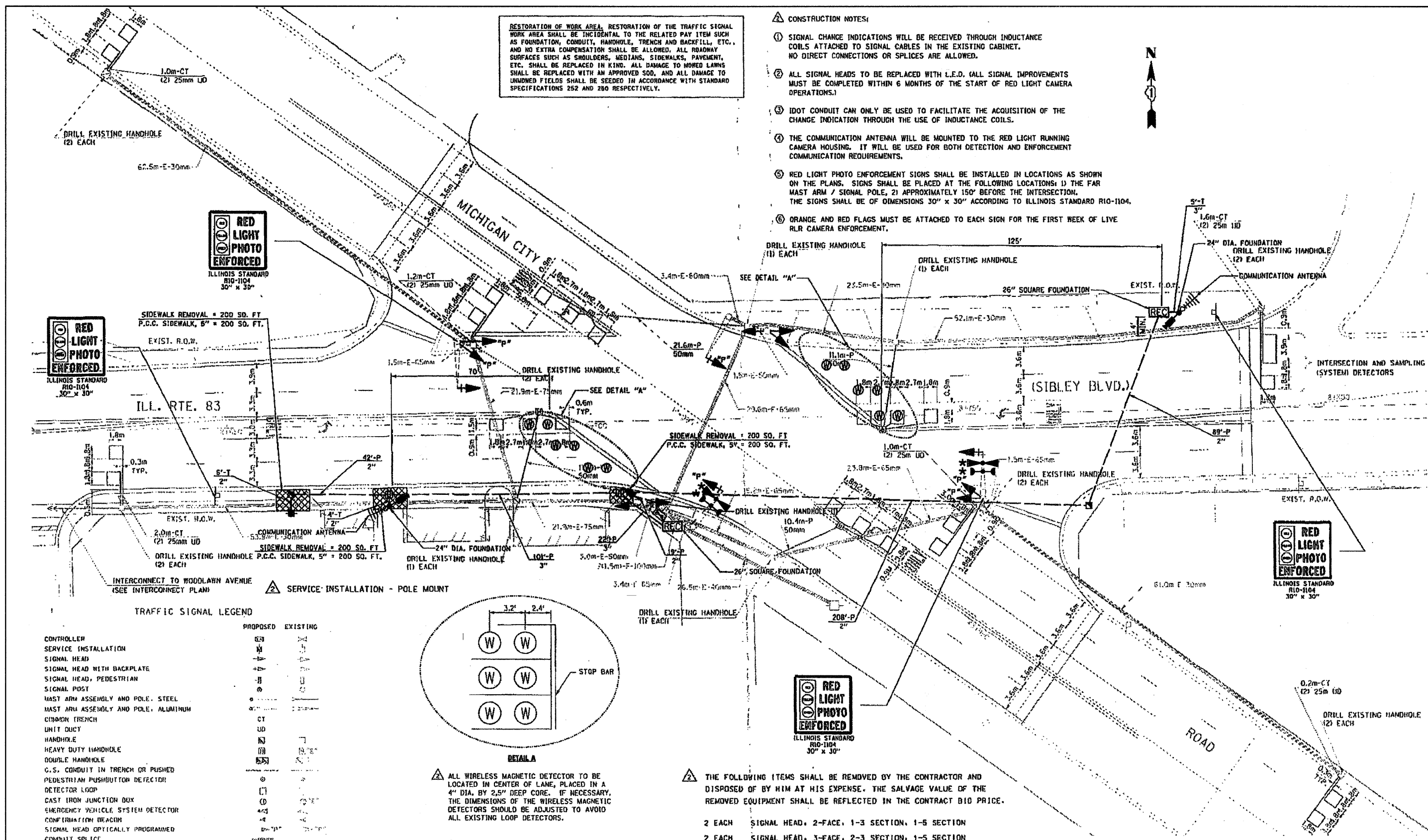


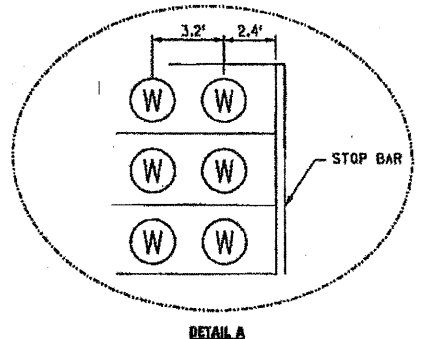
RESTORATION OF WORK AREA, RESTORATION OF THE TRAFFIC SIGNAL WORK AREA SHALL BE INCIDENTAL TO THE RELATED PAY ITEM SUCH AS FOUNDATION, CONDUIT, HANDHOLE, TRENCH AND BACKFILL, ETC., AND NO EXTRA COMPENSATION SHALL BE ALLOWED. ALL ROADWAY SURFACES SUCH AS SHOULDERS, MEDIANS, SIDEWALKS, PAVEMENT, ETC. SHALL BE REPLACED IN KIND. ALL DAMAGE TO MOWED LAWNS SHALL BE REPLACED WITH AN APPROVED SOD, AND ALL DAMAGE TO UNMOWED FIELDS SHALL BE SEEDED IN ACCORDANCE WITH STANDARD SPECIFICATIONS 252 AND 260 RESPECTIVELY.

- CONSTRUCTION NOTES:**
- SIGNAL CHANGE INDICATIONS WILL BE RECEIVED THROUGH INDUCTANCE COILS ATTACHED TO SIGNAL CABLES IN THE EXISTING CABINET. NO DIRECT CONNECTIONS OR SPLICES ARE ALLOWED.
 - ALL SIGNAL HEADS TO BE REPLACED WITH L.E.D. (ALL SIGNAL IMPROVEMENTS MUST BE COMPLETED WITHIN 6 MONTHS OF THE START OF RED LIGHT CAMERA OPERATIONS.)
 - IDOT CONDUIT CAN ONLY BE USED TO FACILITATE THE ACQUISITION OF THE CHANGE INDICATION THROUGH THE USE OF INDUCTANCE COILS.
 - THE COMMUNICATION ANTENNA WILL BE MOUNTED TO THE RED LIGHT RUNNING CAMERA HOUSING. IT WILL BE USED FOR BOTH DETECTION AND ENFORCEMENT COMMUNICATION REQUIREMENTS.
 - RED LIGHT PHOTO ENFORCEMENT SIGNS SHALL BE INSTALLED IN LOCATIONS AS SHOWN ON THE PLANS. SIGNS SHALL BE PLACED AT THE FOLLOWING LOCATIONS: 1) THE FAR MAST ARM / SIGNAL POLE, 2) APPROXIMATELY 150' BEFORE THE INTERSECTION. THE SIGNS SHALL BE OF DIMENSIONS 30" x 30" ACCORDING TO ILLINOIS STANDARD RIO-1104.
 - ORANGE AND RED FLAGS MUST BE ATTACHED TO EACH SIGN FOR THE FIRST WEEK OF LIVE RLR CAMERA ENFORCEMENT.



TRAFFIC SIGNAL LEGEND

	PROPOSED	EXISTING
CONTROLLER	CS	
SERVICE INSTALLATION	SI	
SIGNAL HEAD	A	
SIGNAL HEAD WITH BACKPLATE	A+	
SIGNAL HEAD, PEDESTRIAN	A-P	
SIGNAL POST	SP	
MAST ARM ASSEMBLY AND POLE, STEEL	MA	
MAST ARM ASSEMBLY AND POLE, ALUMINUM	MAA	
CINDOR TRENCH	CT	
UNIT DUCT	UD	
HANDHOLE	H	
HEAVY DUTY HANDHOLE	H1	
DOUBLE HANDHOLE	H2	
C.S. CONDUIT IN TRENCH OR PUSHED	CC	
PEDESTRIAN PUSHBUTTON DETECTOR	PB	
DETECTOR LOOP	L	
CAST IRON JUNCTION BOX	CB	
EMERGENCY VEHICLE SYSTEM DETECTOR	EVSD	
CONFIRMATION BEACON	CB	
SIGNAL HEAD OPTICALLY PROGRAMMED	OP	
CONDUIT SPLICE	CS	
HEAD POLE	HP	
RADEWAY FOR MAGNETIC DETECTOR, TYPE 1 OR TYPE 11	RD	
VEHICLE DETECTOR, NON COMPENSATED MAGNETIC TYPE	VD	
RAILROAD CINDOR CABINET	RC	



ALL WIRELESS MAGNETIC DETECTOR TO BE LOCATED IN CENTER OF LANE, PLACED IN A 4" DIA. BY 2.5" DEEP CORE. IF NECESSARY, THE DIMENSIONS OF THE WIRELESS MAGNETIC DETECTORS SHOULD BE ADJUSTED TO AVOID ALL EXISTING LOOP DETECTORS.

RED LIGHT INSTALLATION LEGEND
 RED LIGHT ENFORCEMENT CABINET
 RED LIGHT ENFORCEMENT CAMERA
 WIRELESS MAGNETIC DETECTOR
 RED LIGHT PHOTO ENFORCEMENT SIGN

- THE FOLLOWING ITEMS SHALL BE REMOVED BY THE CONTRACTOR AND DISPOSED OF BY HIM AT HIS EXPENSE. THE SALVAGE VALUE OF THE REMOVED EQUIPMENT SHALL BE REFLECTED IN THE CONTRACT BID PRICE.
- 2 EACH SIGNAL HEAD, 2-FACE, 1-3 SECTION, 1-5 SECTION
 - 2 EACH SIGNAL HEAD, 3-FACE, 2-3 SECTION, 1-5 SECTION
 - 4 EACH SIGNAL HEAD, 1 FACE, 5 SECTION

* THIS PLAN IS FOR THE PURPOSE OF INSTALLING EMERGENCY VEHICLE PREEMPTION EQUIPMENT AS SHOWN PER PLAN INDICATED IN THE SCHEDULE OF QUANTITIES. ALL OTHER EQUIPMENT SHOWN SHALL BE DISREGARDED.