

FAU RTE	SECTION	COUNTY	TOTAL SHEETS	SHEET NO.
FAU 3776	08-00088-00-RS	COOK	14	1
F.H.W.A. REG.	ILLINOIS PROJECT	M-9003(156)	CONTRACT NO. 63318	

STATE OF ILLINOIS
DEPARTMENT OF TRANSPORTATION
DIVISION OF HIGHWAYS

PLANS FOR PROPOSED FEDERAL AID HIGHWAY

FAU RTE. 3776 (91ST STREET)
FROM PULASKI ROAD (FAP 368) TO KEDZIE AVENUE (FAU 2721)
LAPP RESURFACING
SECTION NO. 08-00088-00-RS
PROJECT M-9003(156)
VILLAGE OF EVERGREEN PARK
COOK COUNTY
C-91-172-09

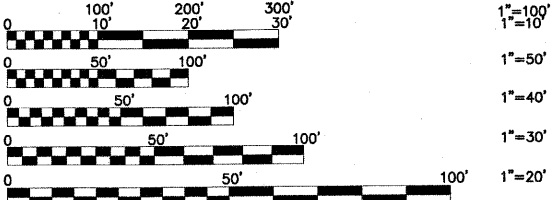
- INDEX OF SHEETS**
- COVER SHEET, INDEX OF SHEETS, LOCATION MAP, INDEX OF STATE STANDARDS
 - GENERAL NOTES, SUMMARY OF QUANTITIES
 - TYPICAL CROSS SECTIONS, HOT-MIX ASPHALT MIXTURE REQUIREMENTS
 - TYPICAL ALLEY RETURN, JOINT, AND DRIVEWAY DETAILS AND CURB & GUTTER DETAIL AT DRAINAGE STRUCTURE
 - 5-6.) PLAN: 91ST STREET (RESURFACING) - PULASKI ROAD TO KEDZIE AVENUE
 - 7-8.) PLAN: 91ST STREET (PAVEMENT MARKINGS) - PULASKI ROAD TO KEDZIE AVENUE
 - DISTRICT ONE TYPICAL PAVEMENT MARKINGS
 - TRAFFIC CONTROL AND PROTECTION FOR SIDEROADS, INTERSECTIONS, AND DRIVEWAYS
 - SIGNING FOR FLAGGING OPERATION AT WORK ZONE OPENINGS
 - CURB OR CURB AND GUTTER REMOVAL AND REPLACEMENT
 - FRAMES AND LIDS ADJUSTMENTS WITH MILLING
 - BUTT JOINT AND HOT-MIX ASPHALT TAPER DETAILS

- STATE STANDARDS**
- 000001-05 STANDARD SYMBOLS, ABBREVIATIONS, AND PATTERNS
 - 424001-05 CURB RAMPS FOR SIDEWALK
 - 604001-03 FRAME & LIDS, TYPE 1
 - 606001-04 CONCRETE CURB AND COMBINATION CONCRETE CURB & GUTTER
 - 442201-03 CLASS C AND D PATCHES
 - 701501-05 URBAN LANE CLOSURE, 2 L, 2 W UNDIVIDED
 - 701701-06 URBAN LANE CLOSURE, MULTILANE INTERSECTION
 - 701801-04 LANE CLOSURE MULTILANE 1W OR 2W CROSSWALK OR SIDEWALK CLOSURE
 - 701901-01 TRAFFIC CONTROL DEVICES
 - 780001-02 TYPICAL PAVEMENT MARKINGS
 - 886001-01 DETECTOR LOOP INSTALLATIONS
 - 886006-01 TYPICAL LAYOUTS FOR DETECTION LOOPS

TRAFFIC DATA

ADT:
91st STREET 3,750 (2008)

POSTED SPEED	DESIGN SPEED
25 MPH (EXISTING)	25 MPH (EXISTING)
25 MPH (PROPOSED)	25 MPH (PROPOSED)



FULL SIZE PLANS HAVE BEEN PREPARED USING STANDARD ENGINEERING SCALES. REDUCED SIZED PLANS WILL NOT CONFORM TO STANDARD SCALES. IN MAKING MEASUREMENTS ON REDUCED PLANS, THE ABOVE SCALES MAY BE USED.

J.U.L.I.E.
JOINT
UTILITY
LOCATION
INFORMATION FOR
EXCAVATION
CALL 811

Know what's below.
Call before you dig.

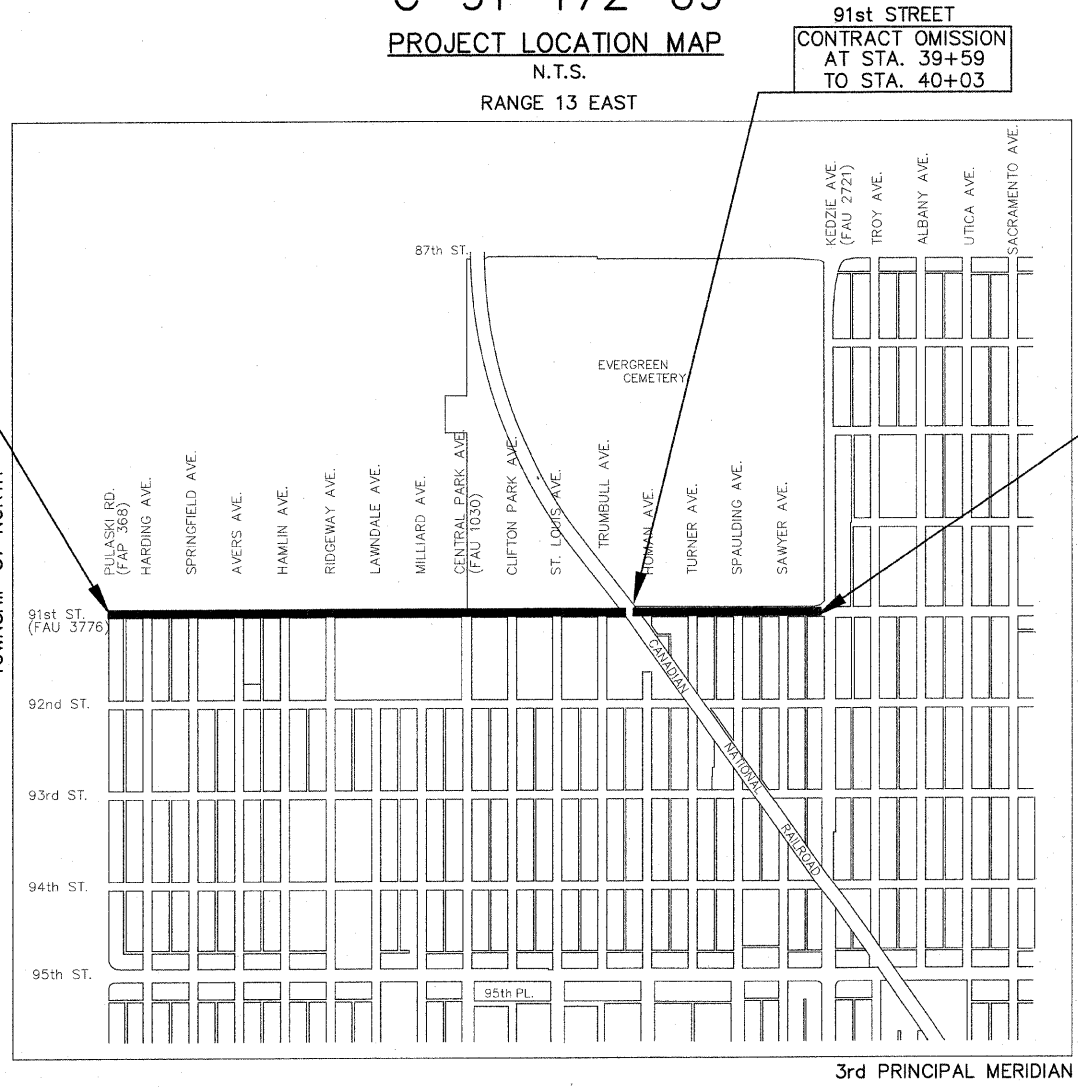
Frank Novotny & Associates, Inc.
Civil Engineers
Municipal Consultants
825 Midway Drive • Willowbrook, IL • 60527 • Telephone: (630) 887-8640 • Fax: (630) 887-0132
ILLINOIS PROFESSIONAL DESIGN FIRM NO. 184-000228

REVISIONS

NO.	BY	DATE	DESCRIPTION
1	THK	10/19/09	PER I.D.O.T. REVIEW

CONTRACT NO. 63318

FIELD ENGINEER: MELCHOR MANCOBA (847)705-4408

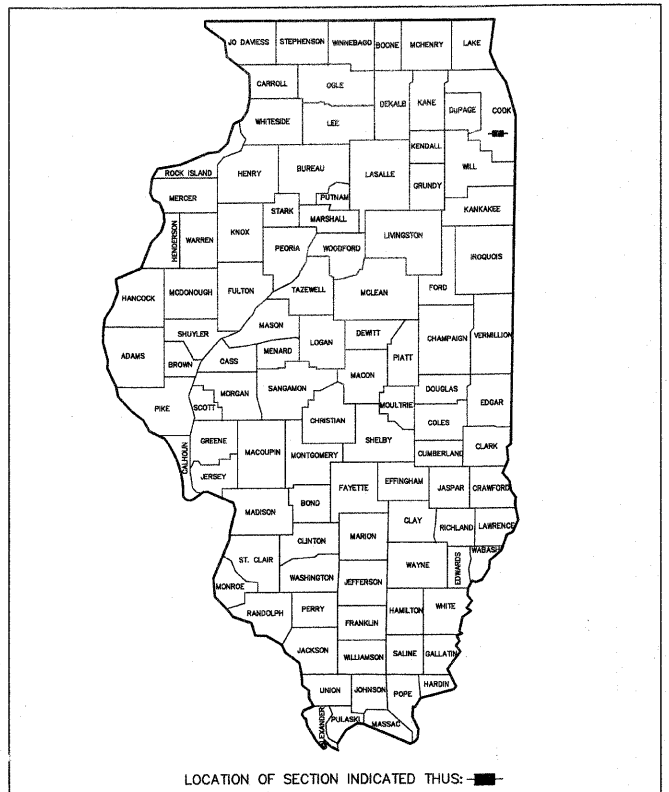


PROJECT LOCATION MAP
N.T.S.
RANGE 13 EAST

91st STREET
CONTRACT OMISSION
AT STA. 39+59
TO STA. 40+03

91st STREET
PROJECT ENDS
AT STA. 53+70

91st STREET
PROJECT BEGINS
AT STA. 1+11



STATE OF ILLINOIS
DEPARTMENT OF TRANSPORTATION
DIVISION OF HIGHWAYS

APPROVED 10-28 2009

VILLAGE PRESIDENT James J. Sexton
JAMES SEXTON, MAYOR

PASSED OCTOBER 29, 2009
CTH
DISTRICT #1 ENGINEER OF LOCAL ROADS & STREETS

RELEASING FOR BID
BASED ON LIMITED
REVIEW OCTOBER 29, 2009
Diana M. O'Keefe
DEPUTY DIRECTOR OF HIGHWAYS, REGION #1 ENGINEER

Timothy H. Klass
TIMOTHY H. KLASS, P.E.
IL. P.E. NO. 062-046111
EXPIRES 11-30-11
10-29-09
DATE

— DENOTES LOCATION OF IMPROVEMENT
IN LYONS TOWNSHIP

LENGTH OF PROJECT

GROSS LENGTH OF PROJECT	5,259 FEET (0.9960 MILES)
NET LENGTH OF PROJECT	5,215 FEET (0.9877 MILES)

PRINTED BY THE AUTHORITY
OF THE STATE OF ILLINOIS