

FOR INDEX OF SHEETS, SEE SHEET NO. 2

FOR INDEX OF HIGHWAY STANDARDS, SEE SHEET NO. 2

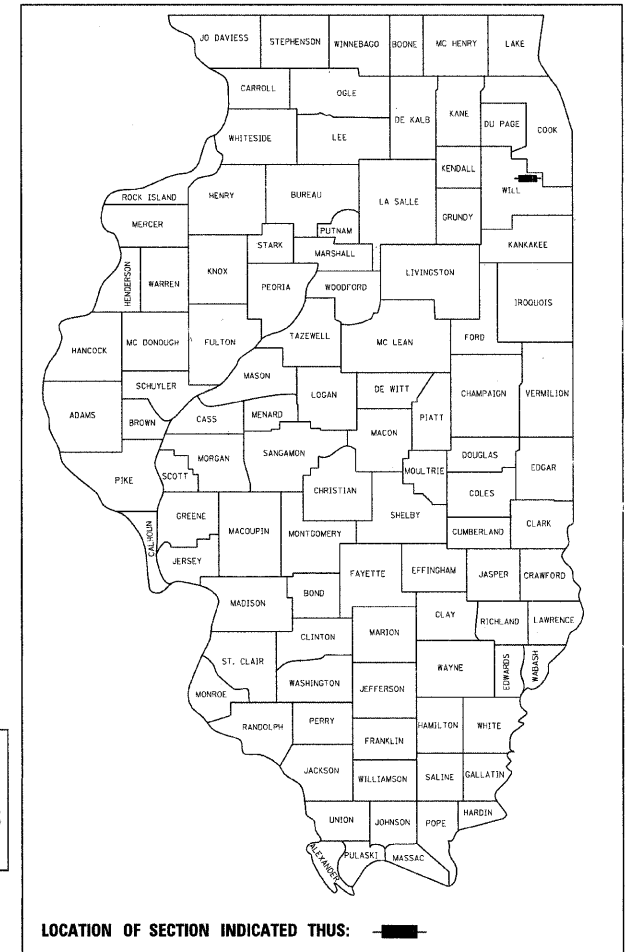
PROJECT LOCATED WITHIN THE VILLAGE OF FRANKFORT

STATE OF ILLINOIS
DEPARTMENT OF TRANSPORTATION
DIVISION OF HIGHWAYS

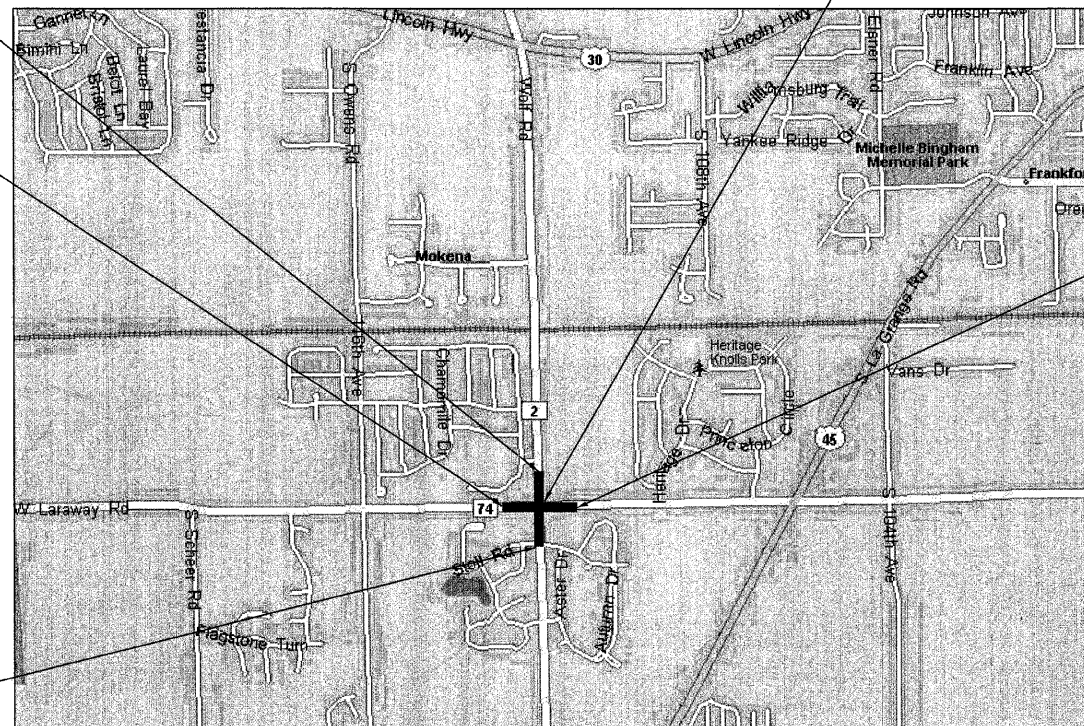
**PLANS FOR PROPOSED
FEDERAL AID HIGHWAY**
**FAU 0320 LARAWAY ROAD (C.H. 74) AT
FAU 2688 WOLF ROAD (C.H. 2)**
TRAFFIC SIGNAL
PROJECT No.: CMM-9003 (023)
SECTION No.: 07-00138-26-TL
JOB No: C-91-405-08
WILL COUNTY

F.A.U. RTE.	SECTION	COUNTY	TOTAL SHEETS	SHEET NO.
320	07-00138-26-TL	WILL	19	1
STA.	TO STA.			
FED. ROAD DIST. NO.	ILLINOIS	FED AID PROJECT		
C-91-405-08		CMM-9003 (023)		

CONTRACT NO. 63329



LOCATION MAP
(NOT TO SCALE)



WOLF ROAD (FAU 2688)
IMPROVEMENT ENDS
STA. 81 + 65

LARAWAY ROAD (FAU 0320)
IMPROVEMENT BEGINS
STA. 576 + 90

LARAWAY ROAD
(FAU 0320)
IMPROVEMENT BEGINS
STA. 583 + 65

ROADWAY DATA:

LARAWAY ROAD ADT = 12,600

WOLF ROAD ADT = 6,250

POSTED SPEED:

LARAWAY ROAD = 40 MPH

WOLF ROAD = 35 MPH

DESIGN SPEED:

LARAWAY ROAD = 45 MPH

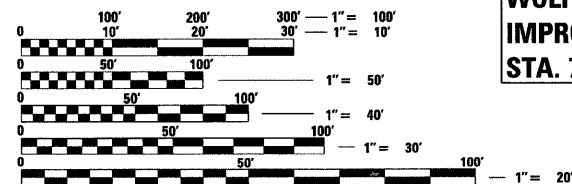
WOLF ROAD = 35 MPH

FUNCTIONAL CLASSIFICATION:

LARAWAY ROAD = ARTERIAL

WOLF ROAD = COLLECTOR

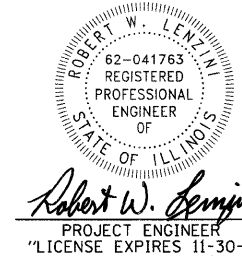
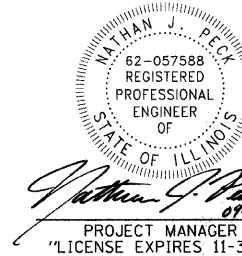
WOLF ROAD (FAU 2688)
IMPROVEMENT BEGINS
STA. 79 + 00



FULL SIZE PLANS HAVE BEEN PREPARED USING STANDARD ENGINEERING SCALES. REDUCED SIZED PLANS WILL NOT CONFORM TO STANDARD SCALES. IN MAKING MEASUREMENTS ON REDUCED PLANS, THE ABOVE SCALES MAY BE USED.

J.U.L.I.E.
JOINT UTILITY LOCATION INFORMATION FOR EXCAVATION
1-800-892-0123

FRANKFORT TOWNSHIP
GROSS LENGTH = 675 LF OR 0.13 MILES
NET LENGTH = 675 LF OR 0.13 MILES



STATE OF ILLINOIS
DEPARTMENT OF TRANSPORTATION
DIVISION OF HIGHWAYS

APPROVED 10/13/09
LOCAL AGENCY, COUNTY ENGINEER

PASSED OCTOBER 27, 2009
DISTRICT ENGINEER OF LOCAL ROADS & STREETS

RELEASING FOR BID
BASED ON LIMITED REVIEW OCTOBER 29, 2009
DEPUTY DIRECTOR OF HIGHWAYS, REGION 1 ENGINEER

PRINTED BY THE AUTHORITY
OF THE STATE OF ILLINOIS

CONTRACT NO. 63329

Burlington, Wisconsin 262.763.7834 Chicago, Illinois 312.578.0050 Crystal Lake, Illinois 815.459.1260 DeKalb, Illinois 815.787.3111 Grayslake, Illinois 847.223.5088 Itasca, Illinois 630.773.1870 Madison, Wisconsin 608.347.1542 Mokena, Illinois 708.478.2090 Plainfield, Illinois 815.609.7425

B&W PROJECT NO.: 071621 DATE: 09-16-09

(OFFICE WHICH PREPARED PLANS)

COPYRIGHT © 2009 BY BAXTER & WOODMAN, INC.
STATE OF ILLINOIS - PROFESSIONAL DESIGN FIRM
No. 07-00138-26-TL
568635
9/17/2009
BUREAU OF LOCAL ROADS AND STREETS: (MELCHOR MANGOBA, P.E.) 847-705-4408 SCHAUMBURG, IL