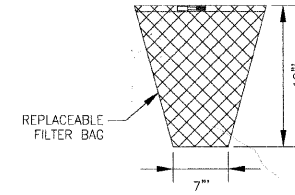


PLAN



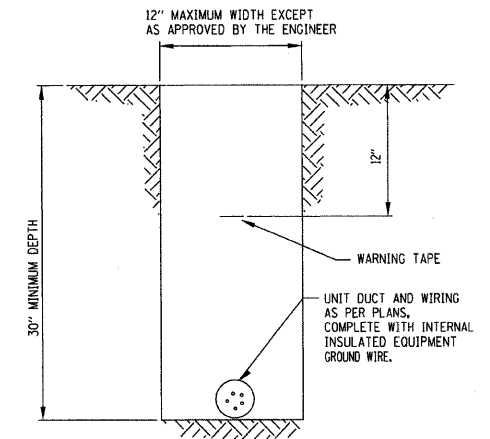
REPLACEABLE FILTER BAG



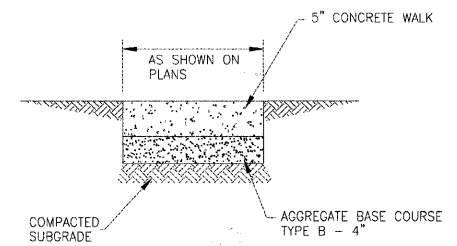
SECTION

GENERAL NOTES:
 FRAME: TOP RING CONSTRUCTED FROM 1 1/4" x 1 1/4" x 1/8" ANGLE.
 BASE RING CONSTRUCTED OF 1 1/2" x 1/2" x 1/8" CHANNEL. HANDLES & SUSPENSION BRACKETS CONSTRUCTED FROM 1/4" x 1 1/4" FLAT. ALL STEEL CONFORMING TO ASTM-A36.
 REPLACEABLE BAG: CONSTRUCTED FROM 4 OZ./SQ. YD. NON-WOVEN POLYPROPYLENE GEOTEXTILE REINFORCED WITH POLYESTER MESH. CONNECTED TO BASE RING WITH STAINLESS STEEL STRAP & LOCK.

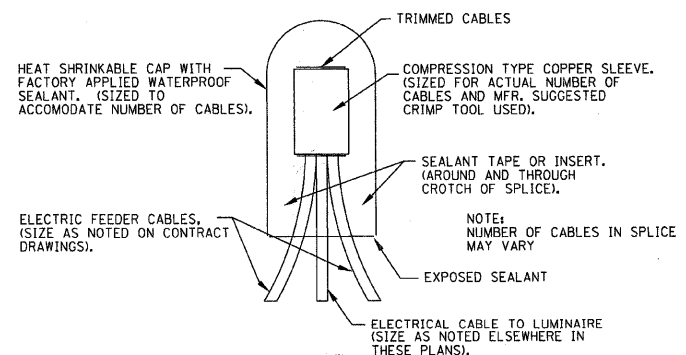
INLET PROTECTION INLET FILTER
 NO SCALE



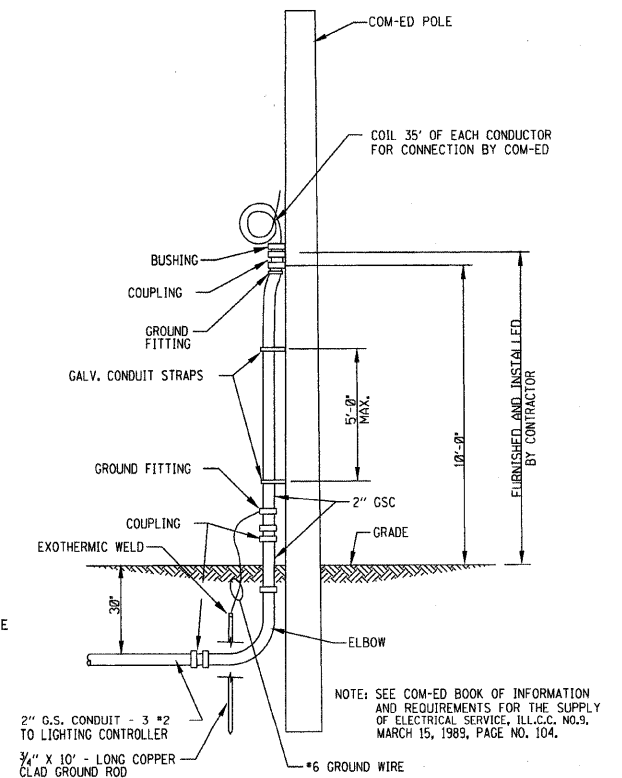
TYPICAL WIRING IN TRENCH DETAIL
 NO SCALE



P.C.C. SIDEWALK 5" (SPECIAL)



SPlicing ELECTRICAL CABLES
 BASIC MATERIALS AND METHODS
 NO SCALE



COM-ED OVERHEAD CONNECTION
 NO SCALE

COPYRIGHT © 2009 BY BAXTER & WOODMAN, INC. ...
 LICENSE NO. 194-0102 - EXPIRES 4/30/2011
 10/15/2009 8:55:44 AM



DESIGNED - NJP	REVISED - PER COUNTY 8-20-09
DRAWN - BCD	REVISED -
CHECKED - RWL	REVISED -
DATE - 06-25-09	FILE - 071621-ConstDet.sht

WILL COUNTY DEPARTMENT OF HIGHWAYS
 LARAWAY ROAD AT WOLF ROAD

CONSTRUCTION DETAILS

SCALE: NONE STA. TO STA.

F.A.J. RTE. 320	SECTION 07-00138-26-TL	COUNTY WILL	TOTAL SHEETS 19	SHEET NO. 16
C-91-405-08		CONTRACT NO. 63329		
FED. ROAD DIST. NO. 1 ILLINOIS FED. AID PROJECT				