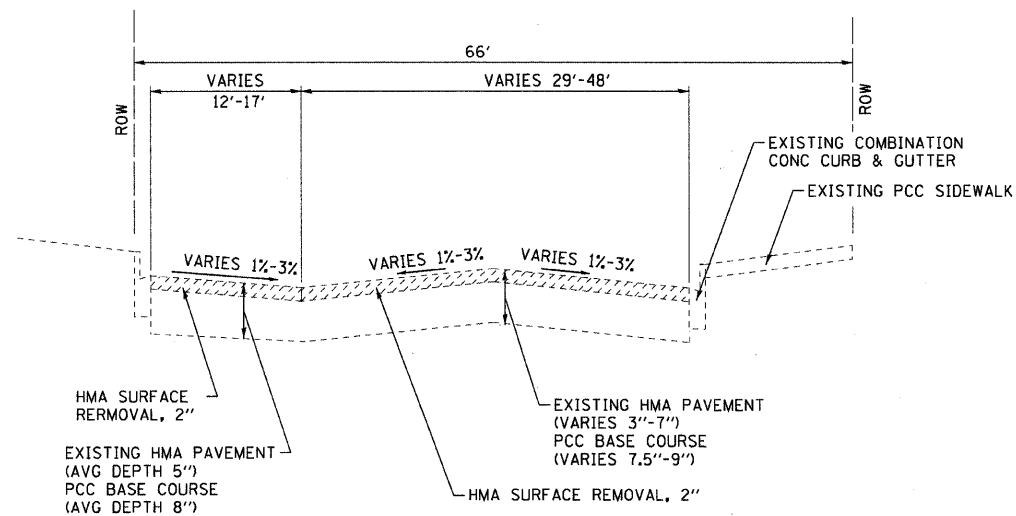


F.A.U. RTE.	SECTION	COUNTY	TOTAL SHEETS	SHEET NO.
09-00083-00-RS	09-00083-00-RS	COOK	17	4
STA.	TO STA.			
FED. ROAD DIST. NO. C-91-773-09	ILLINOIS	FED AID PROJECT ARA-9003(386)		
FAU 3557 BURLINGTON AVENUE CONTRACT NO. 63332				



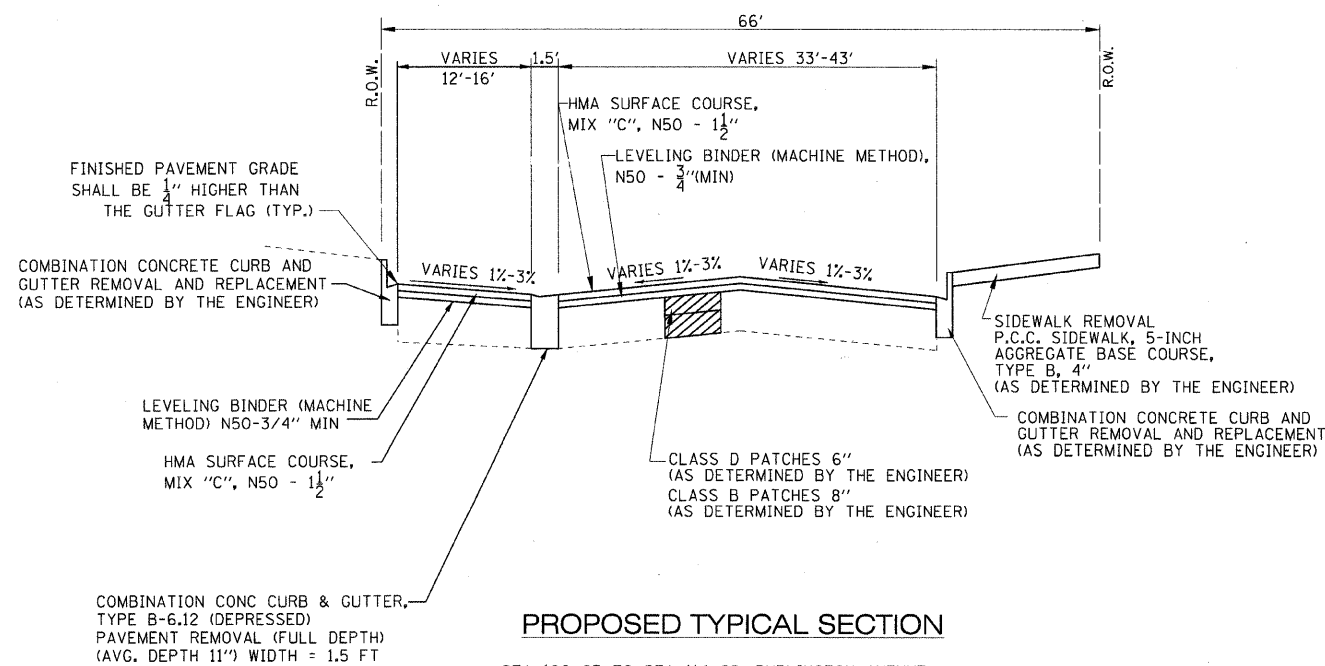
**EXISTING TYPICAL SECTION**

STA 100+05 TO STA 114+68, BURLINGTON AVENUE

**HOT-MIX ASPHALT MIXTURE REQUIREMENTS**

NOTE: CONTRACTOR SHALL MILL BEFORE PATCHING

ITEM	AIR VOIDS
<b>RESURFACING</b>	
HOT-MIX ASPHALT SURFACE COURSE, MIX "C", N50 - 1 1/2 INCH (IL 9.5mm)	4% @ 50 Gyr
LEVELING BINDER (MACHINE METHOD) N50 - 3/4" (IL 9.5mm)	4% @ 50 Gyr
<b>INCIDENTAL RESURFACING</b>	
INCIDENTAL HOT-MIX ASPHALT SURFACING	4% @ 50 Gyr
<b>PATCHING</b>	
CLASS D PATCHES (HMA BINDER IL-19mm) TYPE I-IV - 6 INCH	4% @ 70 Gyr
<p>1. THE UNIT WEIGHT USED TO CALCULATE ALL HOT-MIX ASPHALT SURFACE MIXTURE IS 112 LBS/SQ YD/IN.</p> <p>2. THE "AC TYPE" FOR POLYMERIZED HMA MIXES SHALL BE "SBS/SBR PG 70-22" AND FOR NON-POLYMERIZED HMA THE "AC TYPE" SHALL BE "PG 64-22" UNLESS MODIFIED BY DISTRICT ONE SPECIAL PROVISIONS," FOR "PERCENT OF RAP" SEE DISTRICT ONE SPECIAL PROVISIONS.</p>	



**PROPOSED TYPICAL SECTION**

STA 100+05 TO STA 114+68, BURLINGTON AVENUE

COPYRIGHT © 2009 BY BAXTER & WOODMAN, INC. ...  
 STATE OF ILLINOIS - PROFESSIONAL DESIGN FIRM  
 LICENSE NO. 028249-04  
 07/14/2009



DESIGNED - JGH/CAC	REVISED - PER IDOT 10-2-09
DRAWN - BCD	REVISED -
CHECKED - NJP	REVISED -
DATE - 07-20-09	FILE - 090347-ExTypSec.sht

**VILLAGE OF LA GRANGE, ILLINOIS  
FAU 3557 BURLINGTON AVENUE RESURFACING  
SECTION 09-00083-00-RS**

SCALE: NONE		STA.	TO STA.
-------------	--	------	---------

F.A.U. RTE.	SECTION	COUNTY	TOTAL SHEETS	SHEET NO.
09-00083-00-RS	09-00083-00-RS	COOK	17	4
CONTRACT NO. 63332				
FED. ROAD DIST. NO.	ILLINOIS	FED. AID PROJECT		