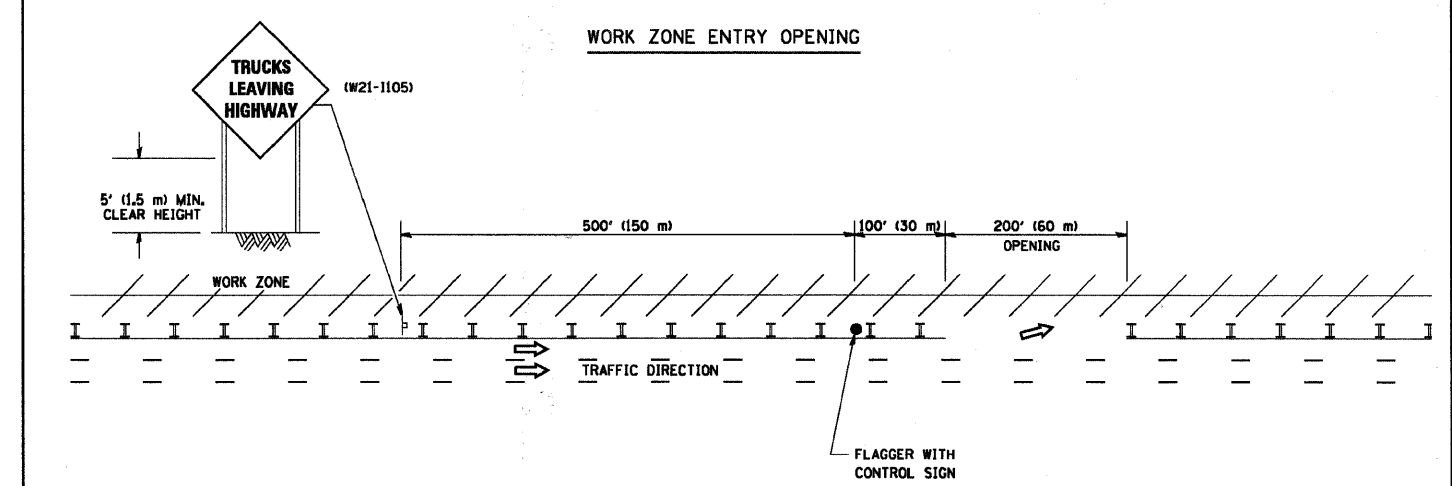
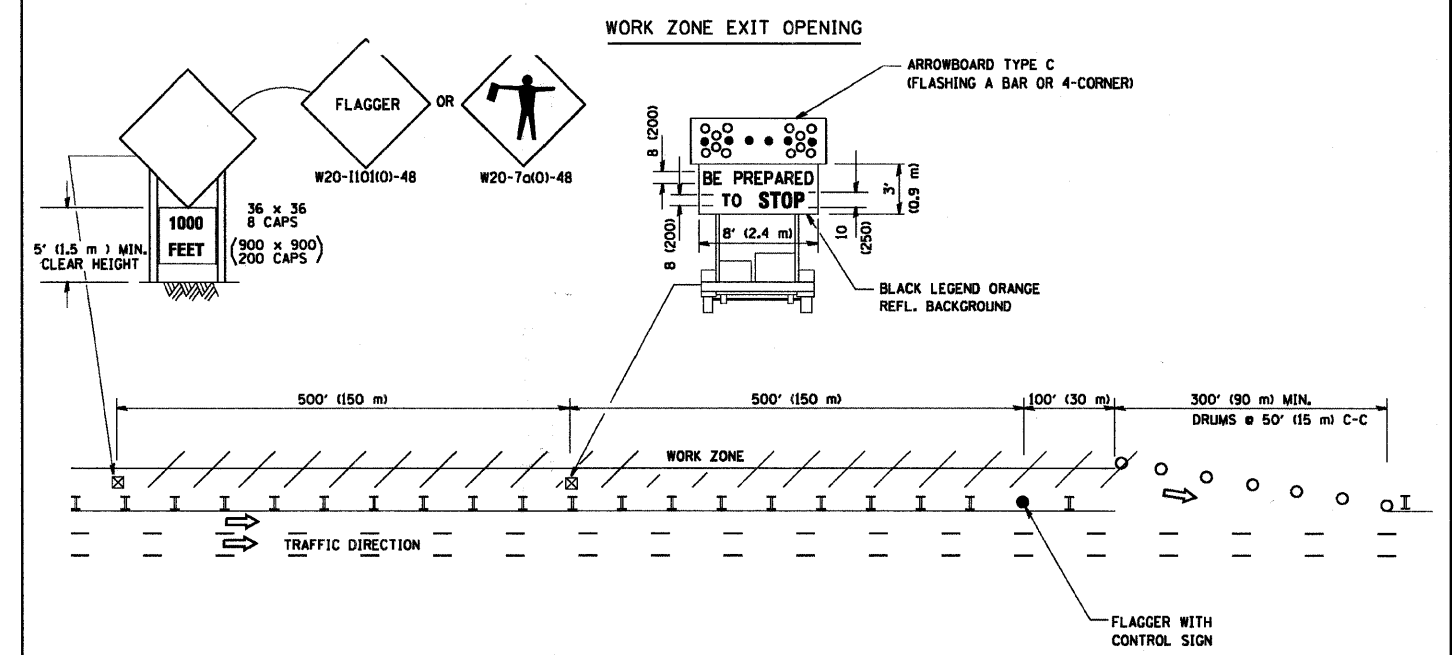


F.A.U. RTE.	SECTION	COUNTY	TOTAL SHEETS	SHEET NO.
NA	09-00083-00-RS	COOK	17	17
STA.		TO STA.		
FED. ROAD DIST. NO	ILLINOIS	FED AID PROJECT		
C-91-773-09		ARA-9003(386)		

• FAU 3557 BURLINGTON AVENUE
CONTRACT NO. 63332

SIGNING FOR FLAGGING OPERATIONS AT WORK ZONE OPENINGS



NOTES:

1. The Arrowboard, the Flagger Ahead trailer mounted sign, and the Trucks Leaving Highway sign shall be removed or turned away from traffic and the exit and entry openings shall be closed when the flagging operation ceases.
2. Work Zone Exit Openings should be a minimum of one half mile apart.
3. Exiting the work zone at any place other than at a Work Zone Exit Opening will be prohibited.
4. All vehicles shall enter the work zone at entry openings, using their turn signals to warn motorists

ALL DIMENSIONS ARE IN INCHES (MILLIMETERS)
UNLESS OTHERWISE SHOWN

COPYRIGHT © 2008 BY BAXTER & WOODMAN, INC. ...
 STATE OF ILLINOIS - PROFESSIONAL DESIGN FIRM
 LICENSE NO. 018-0017720-03
 07/2009
 WOODMAN
 Consulting Engineers

FILE NAME = BAXTER
W:\distatd\22

USER NAME = gaglionobt	DESIGNED -	REVISED - D.W.S. 08-98
PLOT SCALE = 58.000' / IN.	DRAWN -	REVISED - J.A.F. 04-03
PLOT DATE = 1/4/2008	CHECKED -	REVISED - J.A.F. 02-06
	DATE -	REVISED - S.P.B. 01-07

**STATE OF ILLINOIS
DEPARTMENT OF TRANSPORTATION**

SIGNING FOR FLAGGING OPERATIONS AT WORK ZONE OPENINGS			
SCALE: NONE	SHEET NO. 1 OF 1 SHEETS	STA.	TO STA.

F.A.U. RTE.	SECTION	COUNTY	TOTAL SHEETS	SHEET NO.
NA	09-00083-00-RS	COOK	17	17
TC-18		CONTRACT NO. 63332		
FED. ROAD DIST. NO. 1 ILLINOIS FED. AID PROJECT				