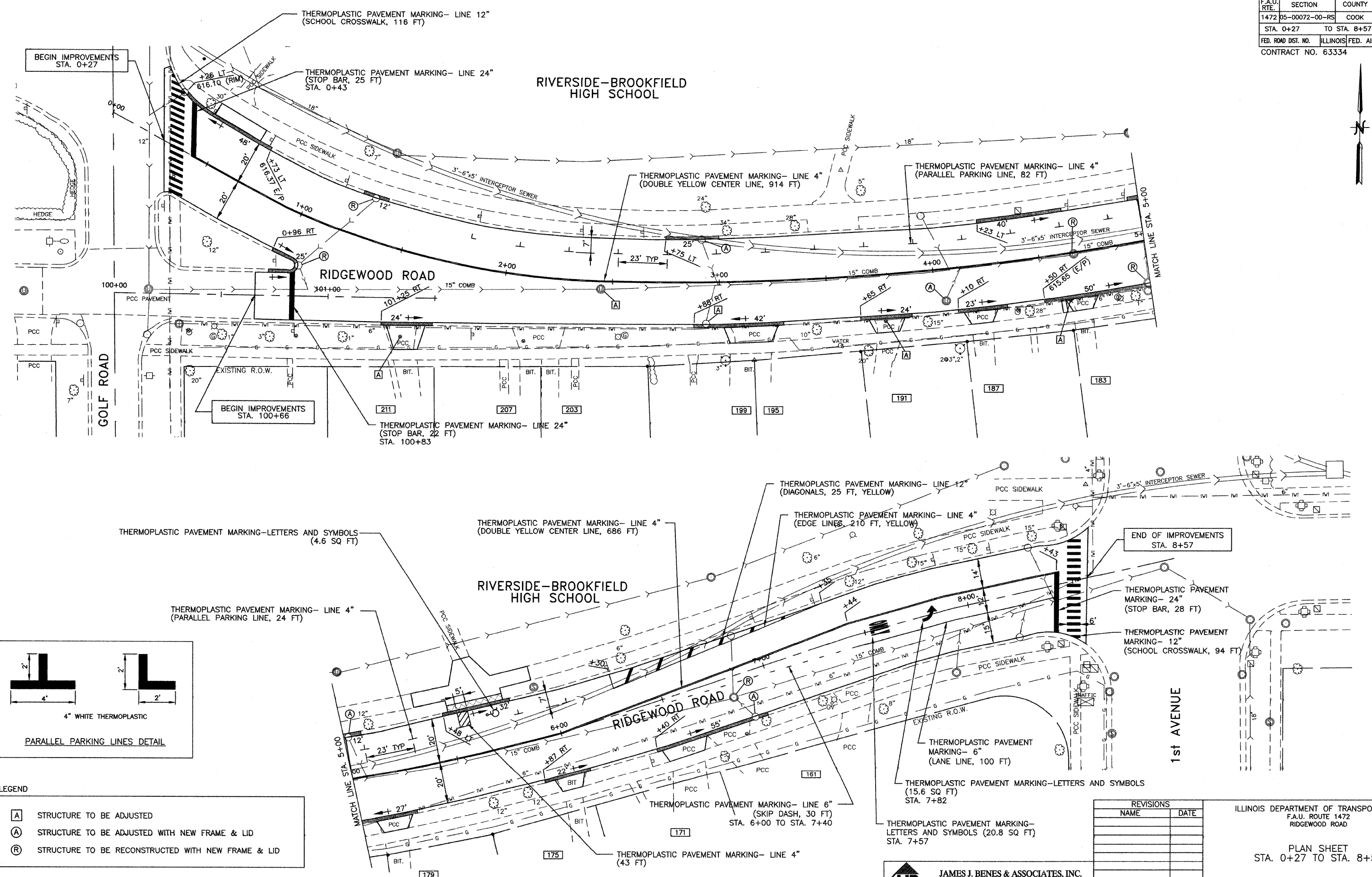


F.A.U. RTE.	SECTION	COUNTY	TOTAL SHEETS	SHEET NO.
1472	05-00072-00-RS	COOK	12	5
STA. 0+27		TO STA. 8+57		
FED. ROAD DIST. NO.		ILLINOIS FED. AID PROJECT		
CONTRACT NO. 63334				

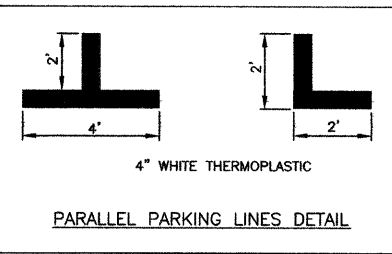


RIVERSIDE-BROOKFIELD HIGH SCHOOL



BEGIN IMPROVEMENTS STA. 100+66

END OF IMPROVEMENTS STA. 8+57



LEGEND

[A]	STRUCTURE TO BE ADJUSTED
[B]	STRUCTURE TO BE ADJUSTED WITH NEW FRAME & LID
[R]	STRUCTURE TO BE RECONSTRUCTED WITH NEW FRAME & LID

REVISIONS	
NAME	DATE

ILLINOIS DEPARTMENT OF TRANSPORTATION
 F.A.U. ROUTE 1472
 RIDGEWOOD ROAD

PLAN SHEET
 STA. 0+27 TO STA. 8+57

SCALE: 1"=20'
 DATE: 9/15/09

DRAWN BY: SMP
 CHECKED BY: JDS

JJB JAMES J. BENES & ASSOCIATES, INC.
 950 Warrenville Road, Suite 101, Lisle, Illinois 60532
 Tel. (630) 719-7570 • Fax (630) 719-7589