

25+1 = 26

F.A.U. RTE.	SECTION	COUNTY	TOTAL SHEETS	SHEET NO.
2744	09-00053-00-RS	LAKE	25	1
STA. 7+17		TO STA. 67+00		
FED. ROAD DIST. NO. 1		ILLINOIS	FED AID PROJECT ARA-9003(457)	
C-91-891-09		CONTRACT NO. 63338		

FOR INDEX OF SHEETS, SEE SHEET NO. 2

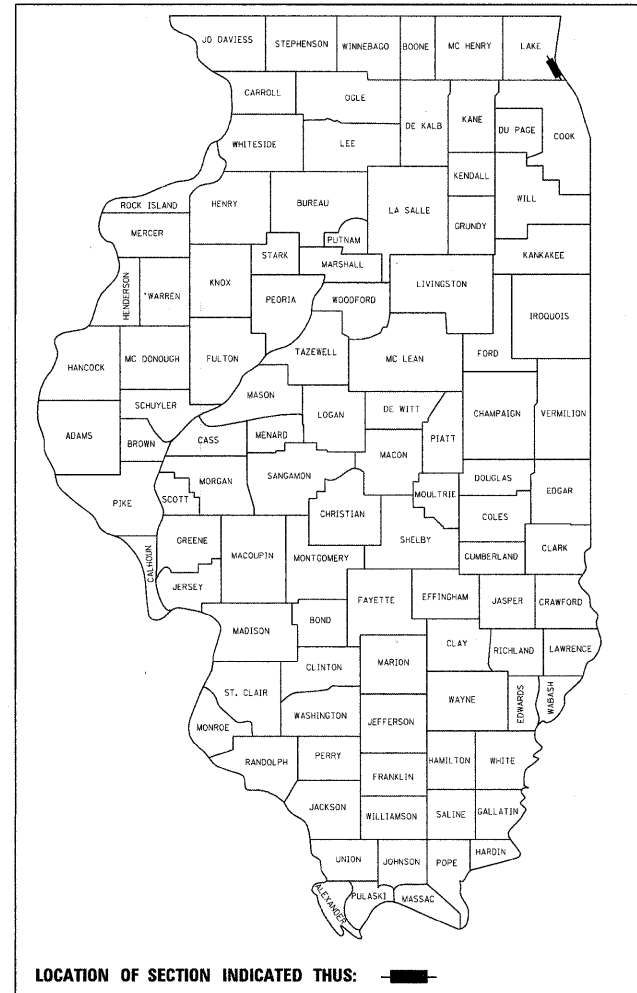
FOR INDEX OF HIGHWAY STANDARDS, SEE SHEET NO. 2

PROJECT LOCATED IN THE CITY OF HIGHWOOD

STATE OF ILLINOIS  
DEPARTMENT OF TRANSPORTATION  
DIVISION OF HIGHWAYS

**PLANS FOR PROPOSED  
FEDERAL AID HIGHWAY**  
**F.A.U. ROUTE 2744 SHERIDAN ROAD**  
**FROM WALKER AVENUE (F.A.U. 1251) TO OLD ELM ROAD (F.A.U. 1248)**

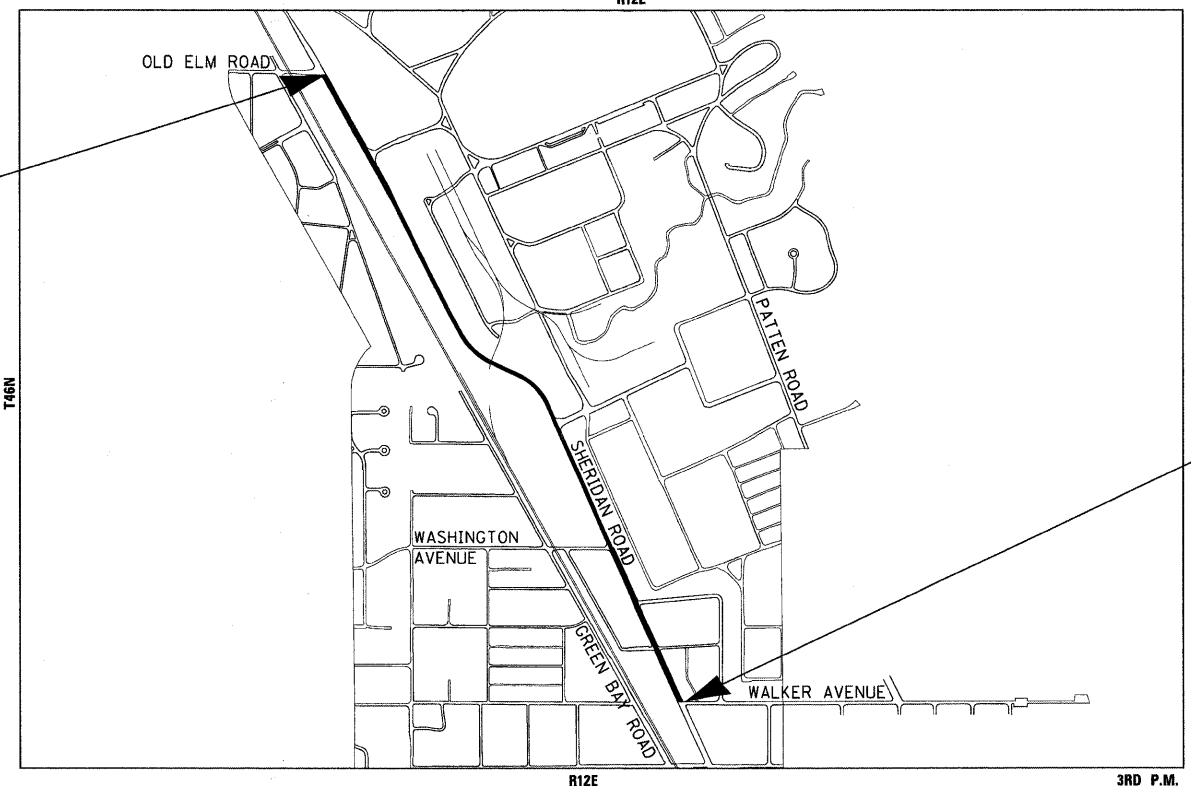
PROJECT NO.: ARA-9003(457)  
SECTION NO.: 09-00053-00-RS  
JOB NO.: C-91-891-09  
CITY OF HIGHWOOD  
LAKE COUNTY



LOCATION OF SECTION INDICATED THUS: [thick black line]

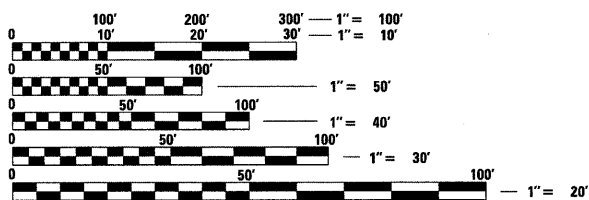
**TRAFFIC DATA**  
SHERIDAN ROAD  
POSTED & DESIGN SPEED LIMIT = 30 MPH  
2009 ADT = 11,400  
COLLECTOR

**PROJECT NO. ARA-9003(457)**  
**F.A.U. ROUTE 2744**  
**SHERIDAN ROAD**  
**END RESURFACING**  
**STA. 67+00**



**PROJECT NO. ARA-9003(457)**  
**F.A.U. ROUTE 2744**  
**SHERIDAN ROAD**  
**BEGIN RESURFACING**  
**STA. 7+17**

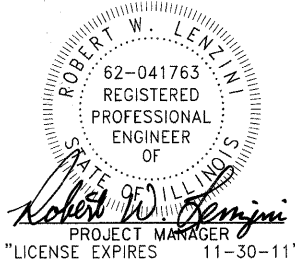
COPYRIGHT 2009, BY BAXTER & WOODMAN, INC.  
STATE OF ILLINOIS - PROFESSIONAL DESIGN FIRM  
LICENSE NO. - 184-001121 - EXPIRES 4/30/2011



FULL SIZE PLANS HAVE BEEN PREPARED USING STANDARD ENGINEERING SCALES. REDUCED SIZED PLANS WILL NOT CONFORM TO STANDARD SCALES. IN MAKING MEASUREMENTS ON REDUCED PLANS, THE ABOVE SCALES MAY BE USED.

J.U.L.I.E. DESIGN STAGE REQUEST  
DIG. No. X2310769

DEERFIELD TOWNSHIP  
GROSS LENGTH OF IMPROVEMENT = 5,983 LF OR 1.13 MILES  
NET LENGTH OF IMPROVEMENT = 5,983 LF OR 1.13 MILES



STATE OF ILLINOIS  
DEPARTMENT OF TRANSPORTATION  
DIVISION OF HIGHWAYS

APPROVED: *Gregory S. Jackson* 10-12-09  
CITY OF HIGHWOOD REPRESENTATIVE

PASSED: *October 27, 2009*  
DISTRICT ENGINEER OF LOCAL ROADS AND STREETS

RELEASING FOR BID  
BASED ON LIMITED  
REVIEW: *October 29, 2009*  
DEPUTY DIRECTOR OF  
HIGHWAYS, REGION 1 ENGINEER

**PRINTED BY THE AUTHORITY  
OF THE STATE OF ILLINOIS**

**Call Before You Dig**  
**JULIE** ILLINOIS ONE-CALL SYSTEM  
CONTACT JULIE AT 811 OR 800-892-0123 WITH THE FOLLOWING:  
COUNTY = LAKE  
CITY-TOWNSHIP = HIGHWOOD-DEERFIELD  
SEC. & 1/4 SEC. NO. = E 1/2 SEC. 15 & THE W 1/2 & SE 1/4 SEC. 10  
48 HOURS (2 working days) BEFORE YOU DIG

CONTRACT NO. 63338

Burlington, Wisconsin 262.763.7834 Chicago, Illinois 312.578.0050 Crystal Lake, Illinois 815.459.1260 DeKalb, Illinois 815.787.3111 Grayslake, Illinois 847.223.5088 Itasca, Illinois 630.773.1870 Madison, Wisconsin 608.347.1542 Mokena, Illinois 708.478.2090 Plainfield, Illinois 815.609.7425

B&W PROJECT NO.: 090831 DATE: 10-05-09

BUREAU OF LOCAL ROADS AND STREETS ASSOCIATE FIELD ENGINEER - KEVIN STALLWORTH, P.E. (847) 705-4169 SCHAUMBURG, IL  
 COPYRIGHT © 2009, BY BAXTER & WOODMAN, INC. STATE OF ILLINOIS - PROFESSIONAL DESIGN FIRM LICENSE NO. - 184-001121 - EXPIRES 4/30/2011  
 PROJECT NO. ARA-9003(457) SECTION NO. 09-00053-00-RS JOB NO. C-91-891-09  
 DRAWING NO. 25+1 = 26