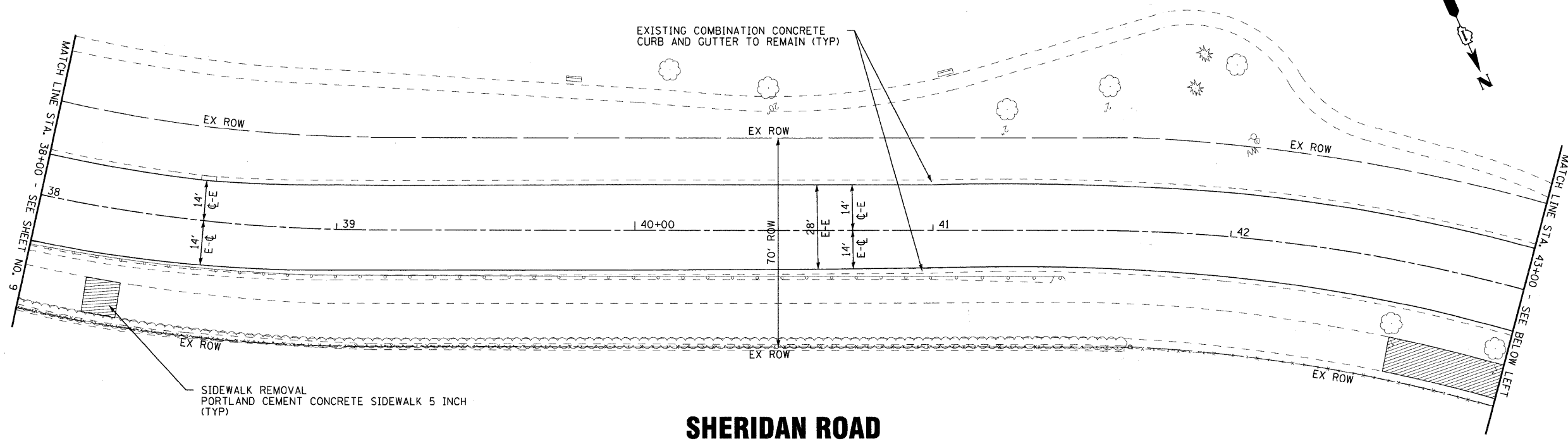
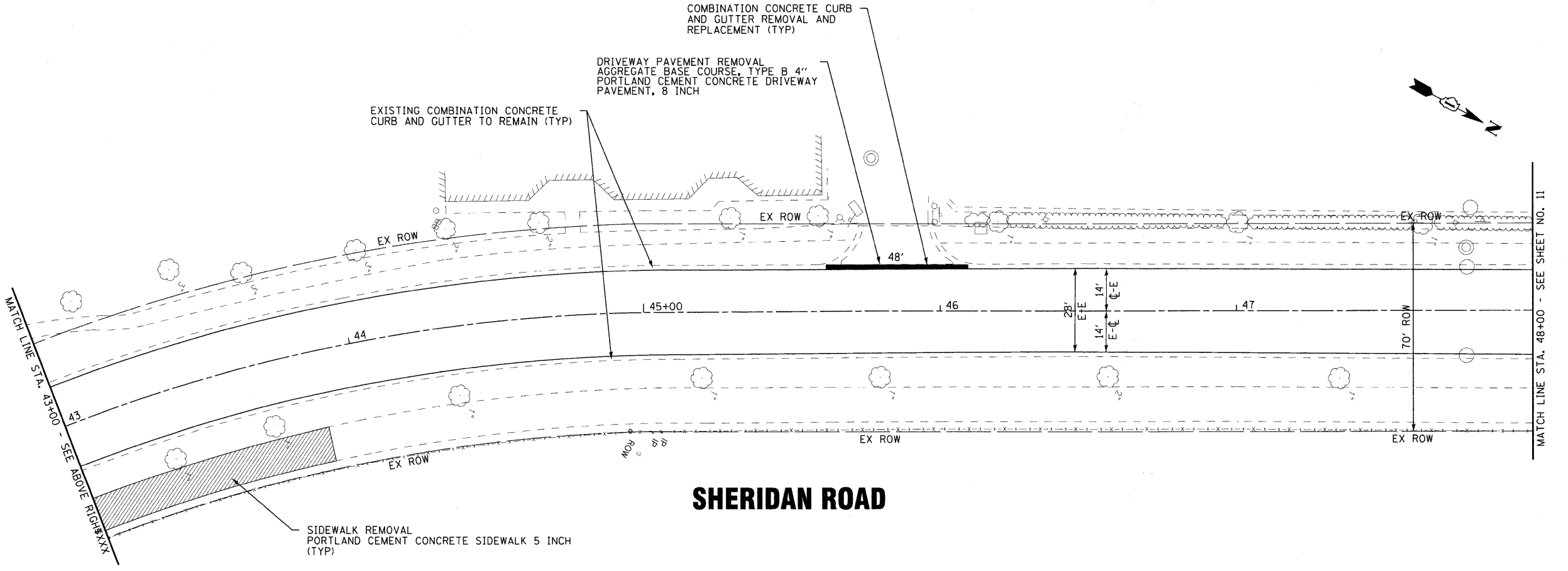


FOR PAVEMENT MARKINGS  
SEE SHEETS 13 & 14.



**SHERIDAN ROAD**



**SHERIDAN ROAD**

COPYRIGHT © 2009 BY BAXTER & WOODMAN, INC.  
 STATE OF ILLINOIS - PROFESSIONAL DESIGN FIRM  
 LICENSE NO. - 184-00121 - EXPIRES 4/30/2011  
 4883.C  
 07/25/2009 3:22:20 PM  
 I:\Projects\090831-ARRA\Drawings\Sheet\090831-pp4.dwg  
 I:\Projects\090831-ARRA\Drawings\Sheet\090831-pp4.dwg



DESIGNED - SLN	REVISED - IDOT REVIEW 10/05/09
DRAWN - KAR	REVISED -
CHECKED - RWL	REVISED -
DATE - 08-20-09	FILE - 090831-pp4.shd

**CITY OF HIGHWOOD, ILLINOIS  
SHERIDAN ROAD ARRA (LAPP)  
RESURFACING**

**PLAN - SHERIDAN ROAD**

SCALE: 1" = 20'      STA. 38+00      TO STA. 48+00

F.A.U. RTE.	SECTION	COUNTY	TOTAL SHEETS	SHEET NO.
2744	09-00053-00-RS	LAKE	25	10
FED. ROAD DIST. NO. 1 C-91-891-09		CONTRACT NO. 63338		
ILLINOIS FED. AID PROJECT ARA-9003(457)				