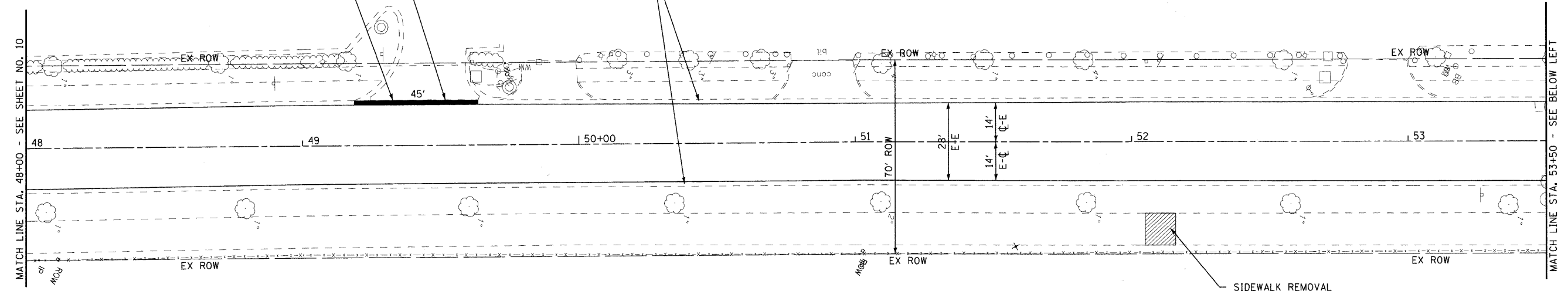


FOR PAVEMENT MARKINGS  
SEE SHEETS 13 & 14.

DRIVEWAY PAVEMENT REMOVAL  
AGGREGATE BASE COURSE, TYPE B 4"  
PORTLAND CEMENT CONCRETE  
DRIVEWAY PAVEMENT, 8 INCH

COMBINATION CONCRETE CURB  
AND GUTTER REMOVAL AND  
REPLACEMENT (TYP)

EXISTING COMBINATION CONCRETE  
CURB AND GUTTER TO REMAIN (TYP)



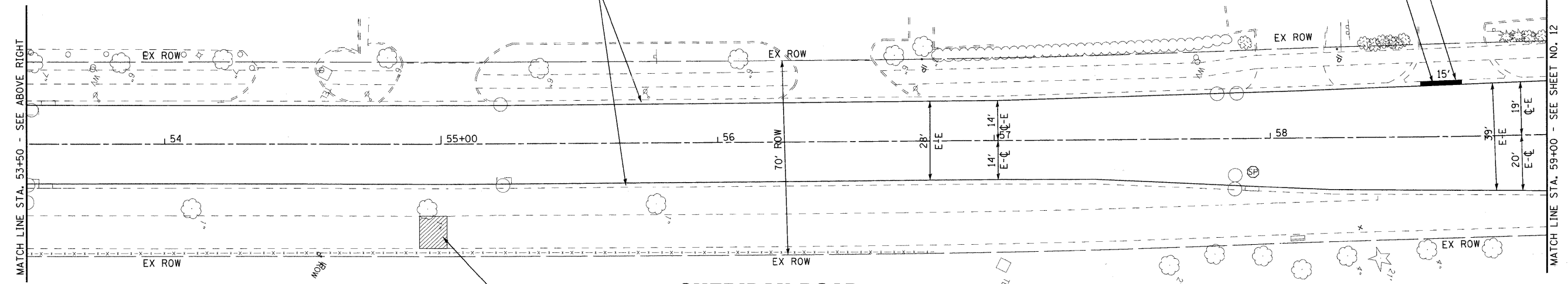
**SHERIDAN ROAD**

SIDEWALK REMOVAL  
PORTLAND CEMENT CONCRETE SIDEWALK 5 INCH  
(TYP)

DRIVEWAY PAVEMENT REMOVAL  
AGGREGATE BASE COURSE, TYPE B 4"  
PORTLAND CEMENT CONCRETE  
DRIVEWAY PAVEMENT, 8 INCH

COMBINATION CONCRETE CURB  
AND GUTTER REMOVAL AND  
REPLACEMENT (TYP)

EXISTING COMBINATION CONCRETE  
CURB AND GUTTER TO REMAIN (TYP)



**SHERIDAN ROAD**

SIDEWALK REMOVAL  
PORTLAND CEMENT CONCRETE SIDEWALK 5 INCH  
(TYP)

COPYRIGHT © 2009 BY BAXTER & WOODMAN, INC.  
 STATE OF ILLINOIS - PROFESSIONAL DESIGN FIRM  
 LICENSE NO. - 184-00127 - EXPIRES 4/30/2011  
 48/cjp  
 07/05/2009 3:22:22 PM  
 I:\projects\090831-arra\lapp\lapp\cadd\survey\drawings\plan\sherdan\sherdan13-14-15.dwg  
 I:\projects\090831-arra\lapp\lapp\cadd\survey\drawings\plan\sherdan\sherdan13-14-15.dwg



DESIGNED - SLN	REVISED - IDOT REVIEW 10/05/09
DRAWN - KAR	REVISED -
CHECKED - RWL	REVISED -
DATE - 08-20-09	FILE - 090831-pp5.shd

**CITY OF HIGHWOOD, ILLINOIS  
SHERIDAN ROAD ARRA (LAPP)  
RESURFACING**

**PLAN - SHERIDAN ROAD**

SCALE: 1" = 20'  
STA. 48+00 TO STA. 59+00

F.A.U. RTE.	SECTION	COUNTY	TOTAL SHEETS	SHEET NO.
2744	09-00053-00-RS	LAKE	25	11
FED. ROAD DIST. NO. 1 C-91-891-09		CONTRACT NO. 63338		
ILLINOIS FED. AID PROJECT ARA-9003(457)				