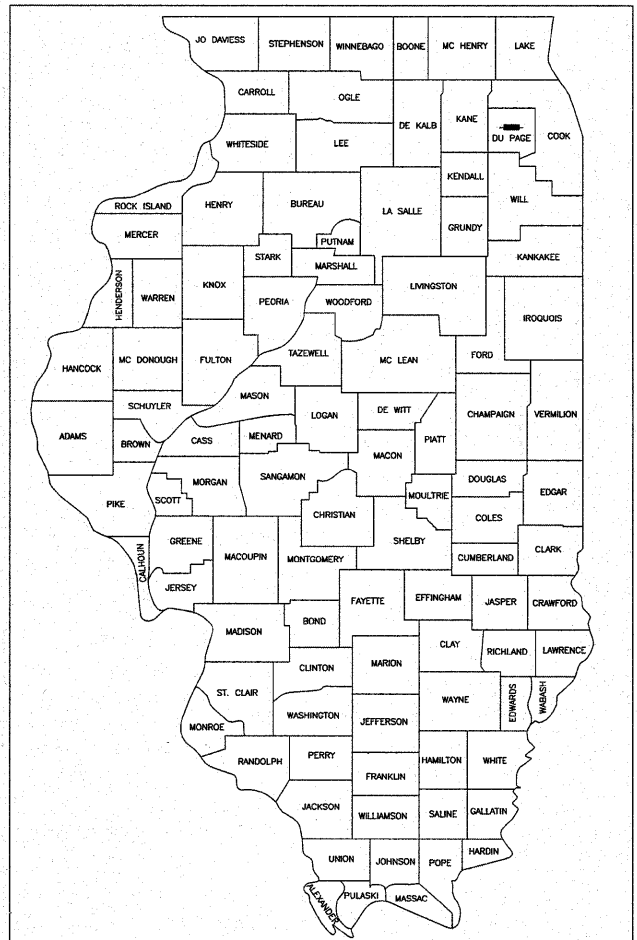


STATE OF ILLINOIS
DEPARTMENT OF TRANSPORTATION
DIVISION OF HIGHWAYS

**PLANS FOR PROPOSED
FEDERAL AID HIGHWAY**
FAU 2580 (PARK BOULEVARD) AND FAU 2576 (LAMBERT ROAD)
RESURFACING
SECTION: 09-00073-00-RS
PROJECT NO. ARA-9003 (417)
VILLAGE OF GLEN ELLYN
DUPAGE COUNTY
JOB NO. C-91-790-09

F.A. RTE.	SECTION	COUNTY	TOTAL SHEETS	SHEET NO.
2580	09-00073-00-RS	DuPage	16	1
FED. ROAD DIST. NO.	ILLINOIS	CONTRACT NO.	63346	



LOCATION OF SECTION INDICATED THUS: -

400 South Green Street - Suite 304
Chicago, Illinois 60607
Phone (312)738-1522
Fax (312)738-9792

KUDRNA
& ASSOCIATES, L.T.D.
www.kudrna.com

203 North Cass Avenue
Westmont, Illinois 60559
Phone (630)969-3060
Fax (630)969-3122

ENGINEERING PLANNING DESIGN AND CONSTRUCTION MANAGEMENT

STATE OF ILLINOIS
DEPARTMENT OF TRANSPORTATION
DIVISION OF HIGHWAYS

APPROVED October 15 20 09
Joseph J. Curran
PUBLIC WORKS DIRECTOR VILLAGE OF GLEN ELLYN

PASSED October 27 20 09
Christy A. Helt
DISTRICT ONE ENGINEER LOCAL ROADS AND STREETS

RELEASED FOR BID
BASED ON LIMITED REVIEW OCTOBER 29, 20 09
Diane M. O'Keefe
DEPUTY DIRECTOR OF HIGHWAYS, REGION ONE ENGINEER

**PRINTED BY THE AUTHORITY
OF THE STATE OF ILLINOIS**

INDEX OF SHEETS

- 1 COVER SHEET
- 2 GENERAL NOTES AND SUMMARY OF QUANTITIES
- 3 EXISTING AND PROPOSED TYPICAL SECTIONS
- 4 PARK BOULEVARD PLAN
- 5 LAMBERT ROAD PLAN
- 6 DETAILS FOR FRAMES AND LIDS ADJUSTMENT WITH MILLING
- 7 PAVEMENT PATCHING FOR HMA SURFACED PAVEMENT
- 8 CURB AND CURB AND GUTTER REMOVAL AND REPLACEMENT
- 9 BUTT JOINT AND HMA TAPER DETAILS
- 10 TRAFFIC CONTROL AND PROTECTION FOR SIDE ROADS INTERSECTIONS, AND DRIVEWAYS
- 11 TYPICAL APPLICATIONS RAISED REFLECTIVE PAVEMENT MARKERS (SNOW PLOW RESISTANT)
- 12 DISTRICT ONE TYPICAL PAVEMENT MARKINGS
- 13 TRAFFIC CONTROL AND PROTECTION AT TURN BAYS (TO REMAIN OPEN TO TRAFFIC)
- 14 PAVEMENT MARKING LETTERS AND SYMBOLS FOR TRAFFIC STAGING
- 15 ARTERIAL ROAD INFORMATION SIGN
- 16 DISTRICT 1 - DETECTOR LOOP INSTALLATION DETAILS FOR ROADWAY RESURFACING

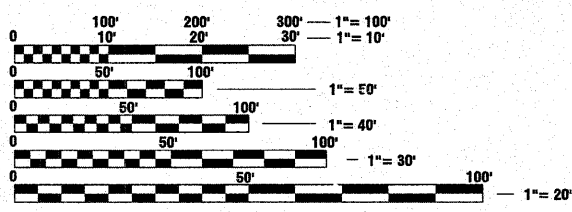
HIGHWAY STANDARDS

- | | |
|-----------|---------------------------------------------------------------|
| 000001-05 | STANDARD SYMBOLS, ABBREVIATIONS, AND PATTERNS |
| 424001-05 | CURB RAMPS FOR SIDEWALKS |
| 442201-03 | CLASS C AND D PATCHES |
| 606001-04 | CONCRETE CURB TYPE B AND COMBINATION CONCRETE CURB AND GUTTER |
| 701501-05 | URBAN LANE CLOSURE, 2L, 2W, UNDIVIDED |
| 701606-06 | URBAN LANE CLOSURE, MULTILANE, 2W WITH MOUNTABLE MEDIAN |
| 701701-06 | URBAN LANE CLOSURE, MULTILANE INTERSECTION |
| 701801-04 | LANE CLOSURE MULTILANE 1W OR 2W CROSSWALK OR SIDEWALK CLOSURE |
| 701901-01 | TRAFFIC CONTROL DEVICES |
| 886001-01 | DETECTOR LOOP INSTALLATIONS |

TRAFFIC DATA

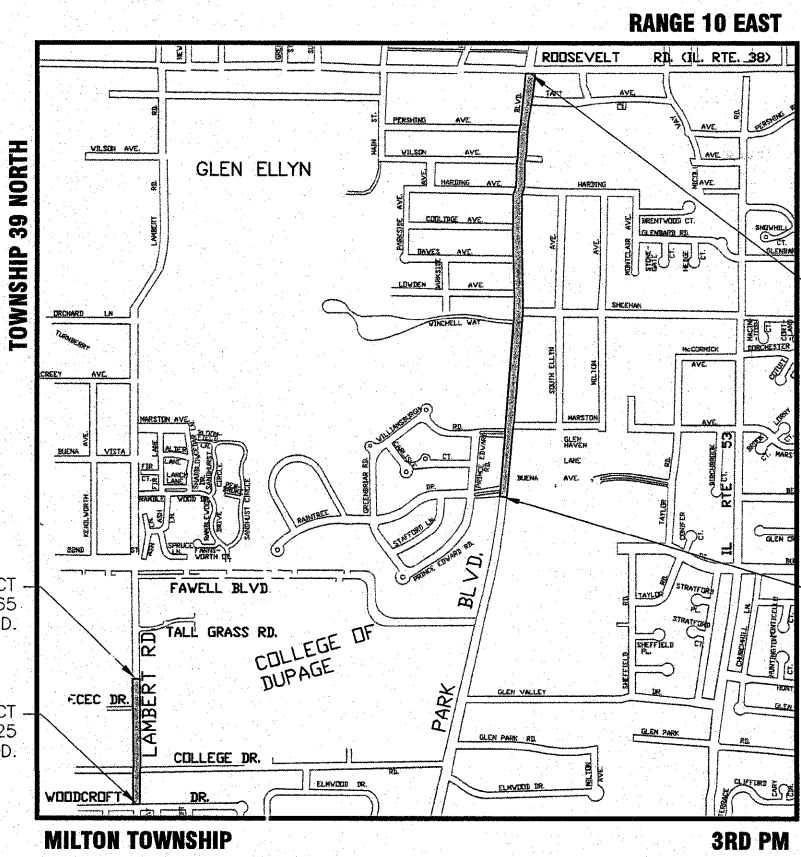
PARK BOULEVARD
POSTED SPEED = 30 M.P.H.
2030 ADT = 18,000
MINOR ARTERIAL

LAMBERT ROAD
POSTED SPEED = 35 M.P.H.
2030 ADT = 12,000
MAJOR COLLECTOR



FULL SIZE PLANS HAVE BEEN PREPARED USING STANDARD ENGINEERING SCALES. REDUCED SIZED PLANS WILL NOT CONFORM TO STANDARD SCALES. IN MAKING MEASUREMENTS ON REDUCED PLANS, THE ABOVE SCALES MAY BE USED.

J.U.L.I.E.
JOINT UTILITY LOCATION INFORMATION FOR EXCAVATION
1-800-892-0123
OR 811

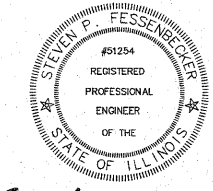


END PROJECT STA. 413+65
LAMBERT RD.

BEGIN PROJECT STA. 400+25
LAMBERT RD.

BEGIN PROJECT STA. 0+50
PARK BLVD.

END PROJECT STA. 46+55
PARK BLVD.



Steven P. Fessebecker
STEVEN P. FESSEBECKER, P.E.
LIC. NO. 062-051254
EXPIRES 11/3/2009

KUDRNA & ASSOCIATES, L.T.D.
ILLINOIS PROFESSIONAL DESIGN FIRM
LICENSE NO. 184-000920
EXPIRES 4/30/2011

LOCATION MAP

GROSS LENGTH PARK BLVD. = 4605 FT. = 0.87 MI.
LAMBERT RD. = 1340 FT. = 0.25 MI.

NET LENGTH PARK BLVD. = 4605 FT. = 0.87 MI.
LAMBERT RD. = 1340 FT. = 0.25 MI.

FIELD ENGINEER: MARLIN SOLOMON 847-705-4407

CONTRACT NO. 63346